

| COLOR LEGEND | |
|--------------|--------------------------|
| FCP1 | MATCH SW #622 |
| P49 | "SAUNTLEY GRAY" SW #7019 |
| P126 | SW #6985 |
| P130 | SW #622 |
| P135 | "DIORIAN GRAY" SW #7017 |
| PF11 | EXTRA WHITE |
| PF12 | SW #622 |
| PF13 | BONE WHITE |

- SHEET NOTES**
1. DOWNSPOUTS ARE INDICATED FOR SIZE, QUANTITY, AND APPROXIMATE LOCATION ONLY.
 2. DOOR HOODS, HOLLOW METAL STEEL DOORS, FRAMES, EXPOSED METAL FLASHING, AND EXPOSED MISCELLANEOUS STEEL SHALL MATCH ADJACENT BUILDING COLOR UNO. IF THERE ARE TWO ADJACENT COLORS AT DOORS USE THE BOTTOM COLOR FOR THE ENTIRE DOOR.
 3. PARAPET STEPS OCCUR AT CONTROL JOINTS REF STRUCTURAL FOR CONTROL JOINT LOCATIONS. REF 7 - A2 FOR FLASHING CONDITION.
 4. AT ALL CMU CONTROL JOINTS IN EIFS, PROTECT BREAK IN EIFS THE WIDTH OF CMU JOINT. FILL WITH SEALANT. REF STRUC FOR JOINT LOCATIONS.
 5. GRIND SPLIT FACE CMU SMOOTH AT ANY BRACKET ATTACHMENTS TO MATCH THE SIZE OF THE BRACKET.
 6. REF AS FOR INITIAL ROOM FINISH PROJECT TO REFERENCE SCUPPER SIZE.

- KEYNOTE LEGEND**
- 1.01 SIGNAGE
 - 2.02 CHAIN LINK FENCING (HEIGHT NOTED ADJACENT TO NOTE)
 - 3.11 PLASTIC SCREENING SLATS INSTALLED VERTICALLY (HEIGHT NOTED ADJACENT TO NOTE)
 - 4.00 CONCRETE CURB
 - 4.01 4" HIGH PRECAST CONCRETE SILL
 - 4.04 CONTROL JOINT TYP. REF STRUCTURAL
 - 4.08 SPLIT FACE CMU
 - 4.09 SMOOTH FACE CMU
 - 4.35 47/32" OPENING AT TRASH COMPACTOR. BOTTOM OF OPENING IS 42" AFF
 - 5.02 PAINTED 6" PIPE BOLLARD
 - 5.09 JOB CRANE HOIST ARM AND RAILING ASSEMBLY
 - 7.01 SHEET METAL DOOR HOOD PAINTED
 - 7.04 METAL FASCIA COVER
 - 7.07 ROOF LINE BEYOND, PREPRESSED
 - 7.17 FIBER CEMENT COMPOSITE WALL PANELS OVERFLOW SCUPPER
 - 7.35 ROOFING MEMBRANE
 - 7.55 ALUMINUM COMPOSITE PANEL (ACM)
 - 8.01 SECTIONAL OVERHEAD DOOR TYP
 - 8.02 HOLLOW METAL DOOR AND FRAME
 - 8.05 ALUMINUM STOREFRONT
 - 8.09 AUTOMATIC SLIDING ENTRANCE DOORS
 - 8.93 FULL HEIGHT OF WALL 1/2" PAINT TEST AREA CENTER ON CONTROL JOINT AT LOCATION OF TRANSITION BETWEEN DISTRIBUTION MASONRY UNITS REF SPECIFICATIONS
 - 10.01 FLASHPOLE
 - 10.02 LOCKABLE FLAGPOLE CLEAT
 - 10.35 CANOPY SYSTEM BY VENDTOR
 - 10.37 3 1/2" X 1/2" HIGH IMPACT HEAVY DUTY EPDM CORNER GUARD HOLD 2" AFF
 - 11.01 DOCK BUMPERS
 - 11.02 DOCK SEAL
 - 16.04 EXTERIOR LIGHT FIXTURE

WALMART
Neighborhood Market
APOPKA, FL
STORE NO: 6894-00
JOB NUMBER: 097-15-006 | PHOTO

ISSUE BLOCK

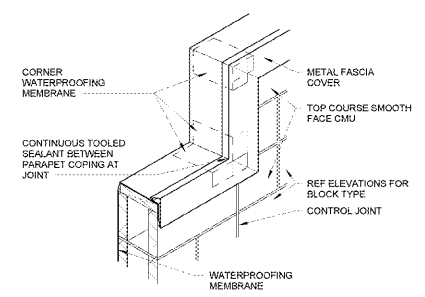
| | | |
|---|-------|----------|
| 1 | REV 1 | 01/25/17 |
| 2 | REV 3 | 03/10/17 |
| 3 | REV 5 | 04/07/17 |

CHECKED BY: MMA
DRAWN BY: MMA
FILE NAME: 41_2-A2
PROTO CYCLE: 102816
DOCUMENT DATE: 01/26/17

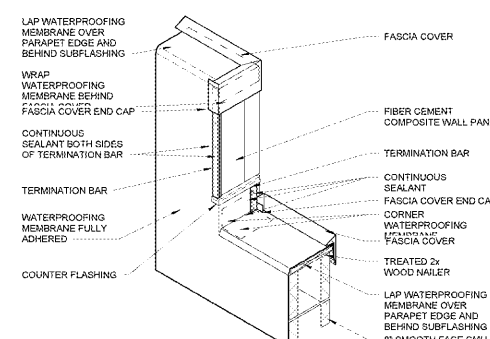
BID SET NOT FOR CONSTRUCTION

EXTERIOR ELEVATIONS

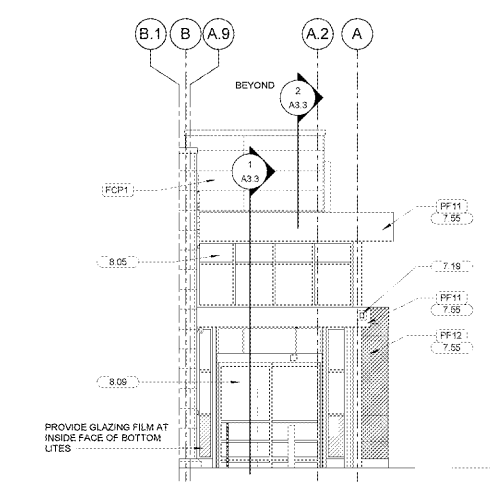
SHEET: A2



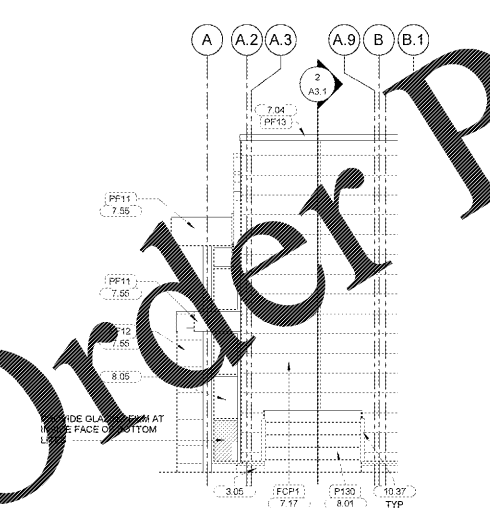
7 PARAPET STEP
NTS



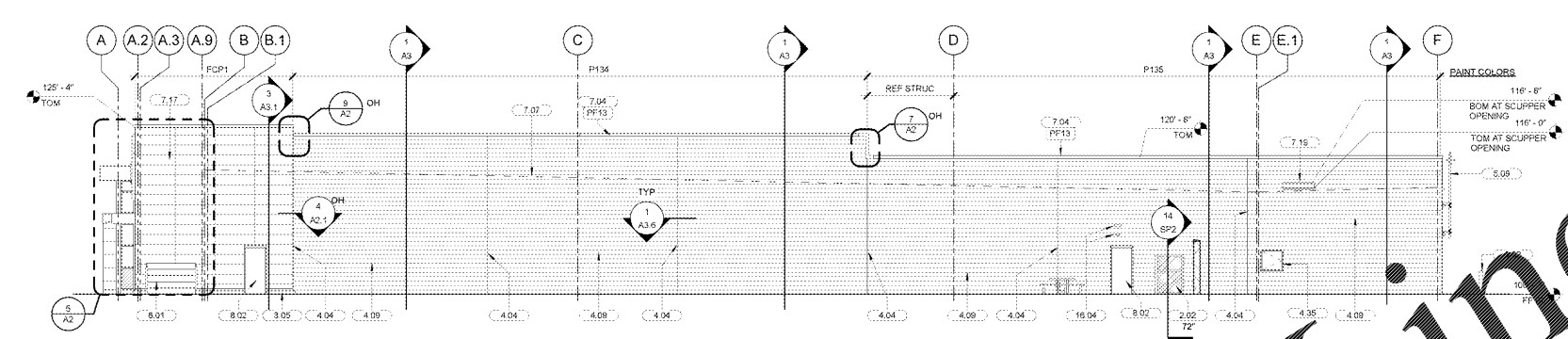
9 PARAPET STEP
NTS



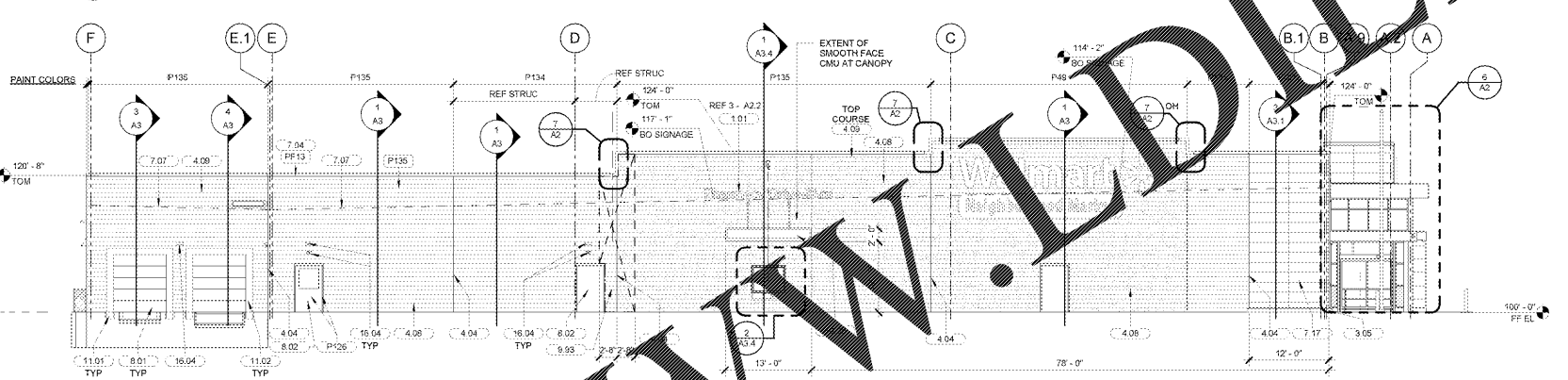
6 ENTRY SIDE ELEVATION
3/16" = 1'-0"



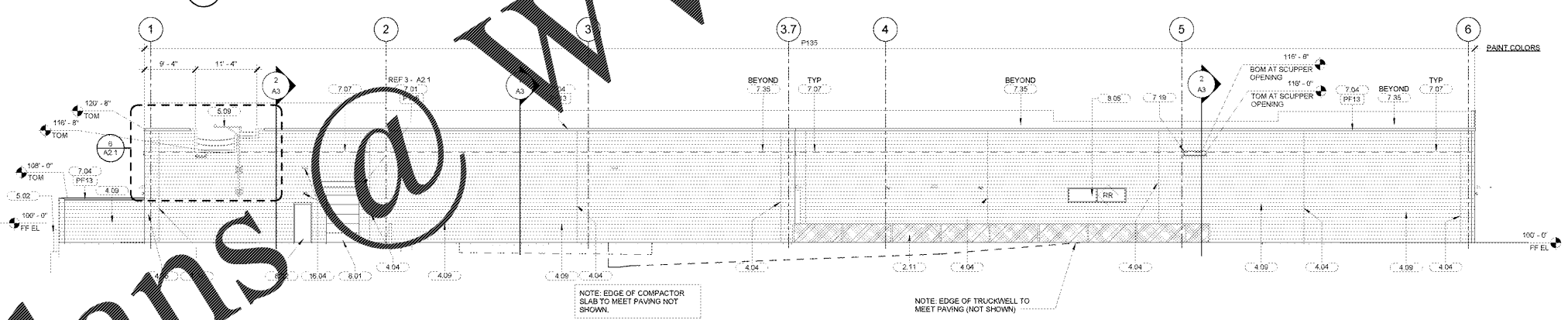
5 ENTRY SIDE ELEVATION
3/16" = 1'-0"



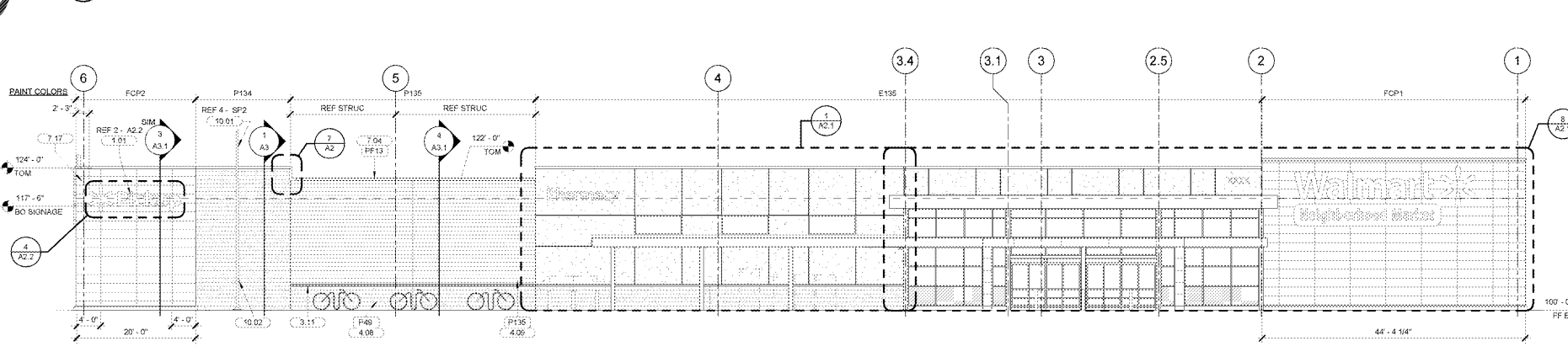
4 SIDE ELEVATION
1" = 10'-0"



3 SIDE ELEVATION
1" = 10'-0"



2 REAR ELEVATION
1" = 10'-0"



1 FRONT ELEVATION
1" = 10'-0"

Order Plans @ www.lidline.com