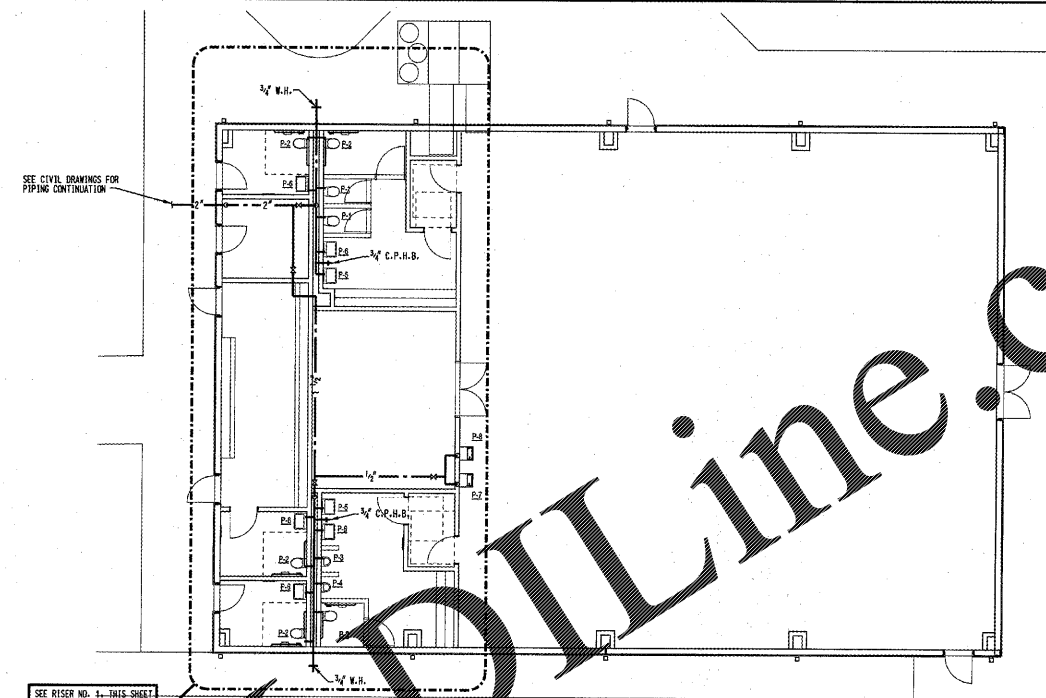
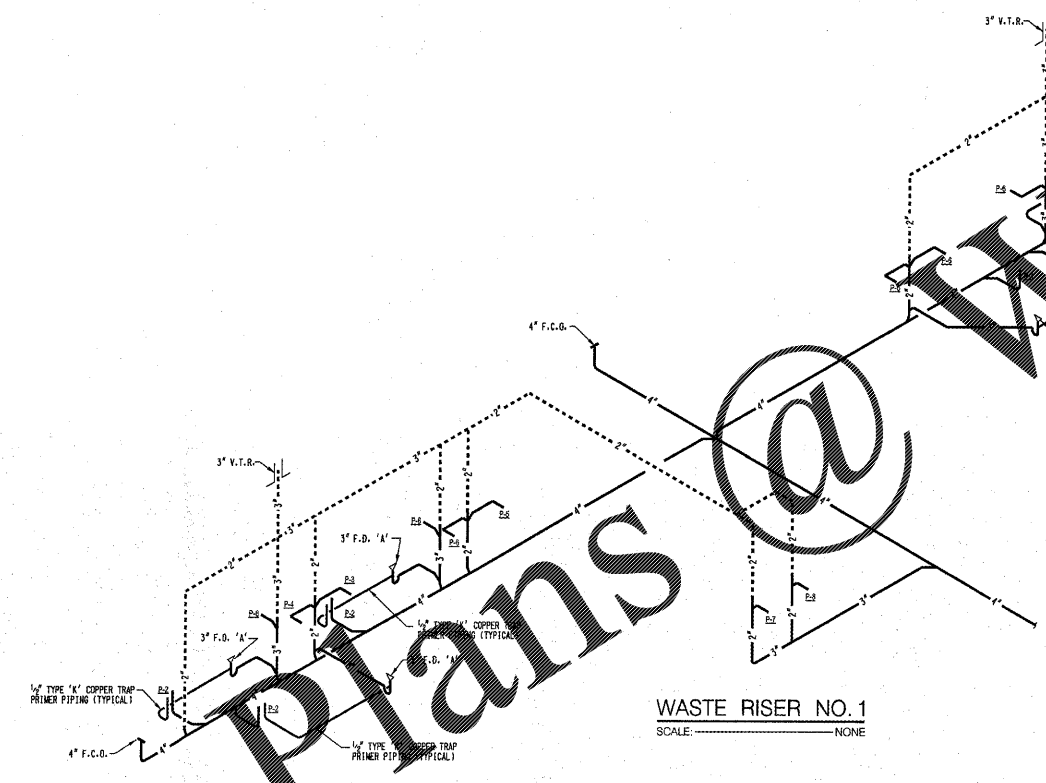


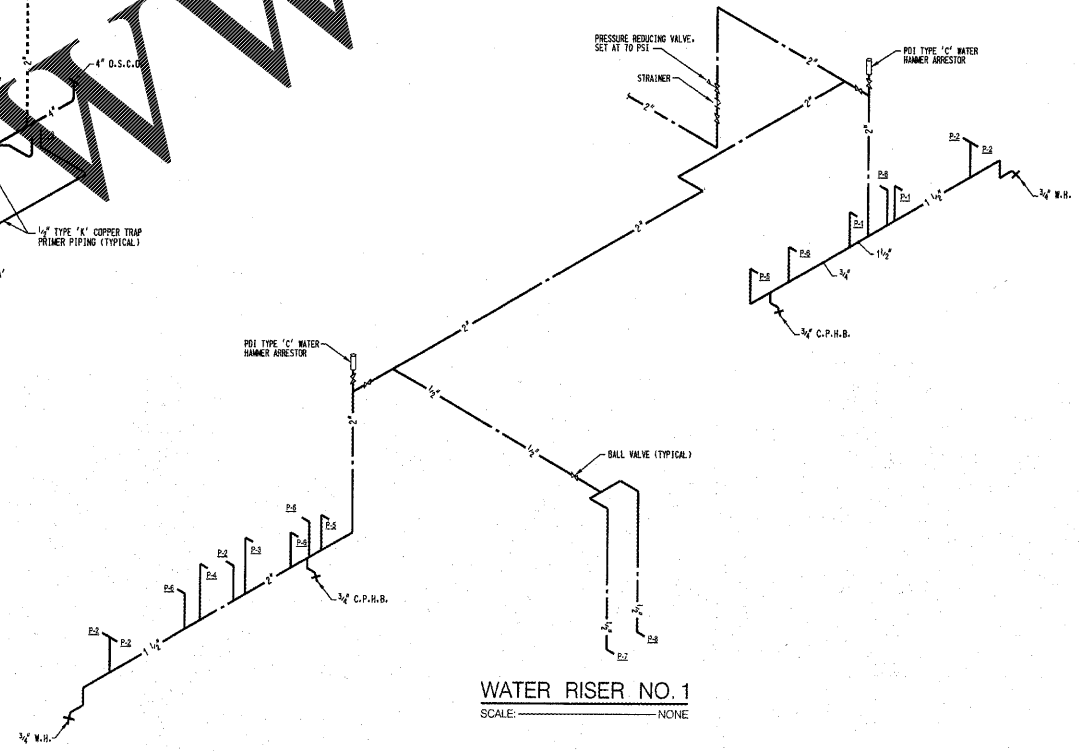
PLUMBING FLOOR PLAN - WASTE
SCALE: 1/8"=1'-0"



PLUMBING FLOOR PLAN - WATER
SCALE: 1/8"=1'-0"



WASTE RISER NO. 1
SCALE: NONE



WATER RISER NO. 1
SCALE: NONE

ISSUANCES	
DATE	DESCRIPTION
03-23-2017	Bid
KEYPLAN	
AH&P CONSULTING ENGINEERS ANDREWS, HAMMOCK & POWELL, INC. 250 Charter Lane Suite 100 MARIETTA, GEORGIA 30129 MARIETTA (478) 405-5201 FAX (478) 405-8210 WWW.AHPENGR.COM	
Manley Spangler Smith Architects A Professional Corporation 525 East Taylor St. P.O. Box 880 Griffin, Georgia 30224 Office 770.227.5473 Fax 770.228.3442	
PROJECT: Whitewater High School Multi-purpose Building	
CLIENT: Fayette County Schools	
SHEET TITLE: PLUMBING FLOOR PLANS AND RISERS	
FACILITY CODE: © 2017 Manley Spangler Smith Architects, PC PROJECT NUMBER: 201628 DATE: 03-23-2017 SCALE: 1/8"=1'-0" DRAWN BY: JMC CHECKED BY: JMC	
SHEET NO.:	P101

Order Plans @

WWW.WLDLine.com