

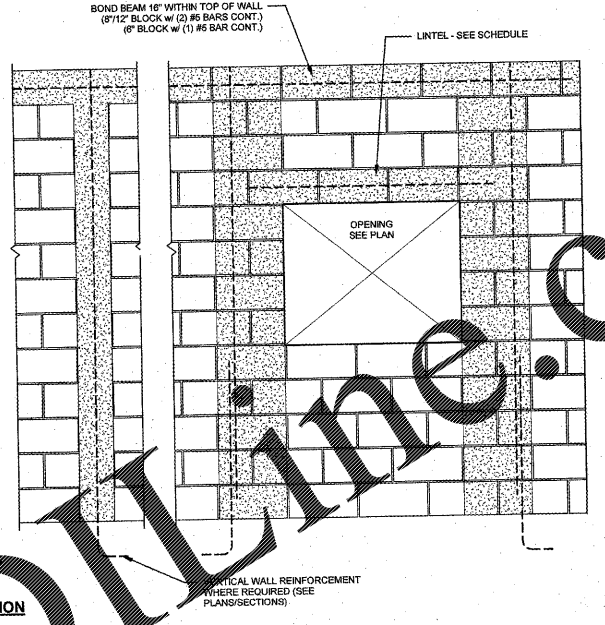
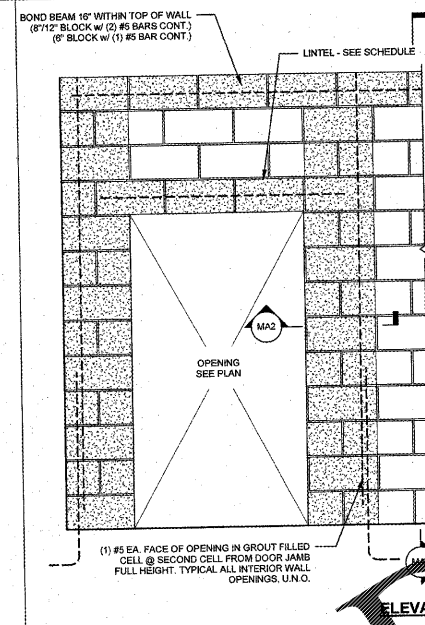
**MINIMUM REINFORCING LAP LENGTH SCHEDULE**

BAR TYPE	BAR SIZE AND LAP LENGTH					
	#3	#4	#5	#6	#7	#8
FILLED 8" CMU CELLS (SINGLE BAR)	17"	25"	31"	37"	43"	51"
FILLED 12" CMU CELLS (SINGLE BAR)	19"	29"	35"	41"	47"	55"
FILLED 12" CMU CELLS (DOUBLE BAR)	19"	29"	35"	41"	47"	55"

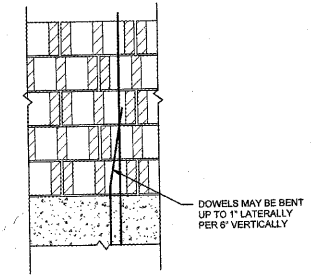
- NOTES:**
- THESE VALUES ARE ADEQUATE FOR REGULAR WEIGHT CONCRETE THEY MAY BE MULTIPLIED BY 1.3 IF LIGHT WEIGHT CONCRETE IS USED.
  - THESE VALUES ARE ADEQUATE FOR BARS WITHOUT EPOXY COATING.
  - THESE VALUES APPLY TO MASONRY w/ f'm = 1,500 PSI.
  - SBC CODE SECTION 2108.9.2.11 ANS SECTION 12.14.3 ALLOW A WELDED SPICE WHEREBY BARS ARE BUTTED AND WELDED TO DEVELOP IN TENSION 125 PERCENT OF THE YIELD STRENGTH OF THE BAR.
  - MECHANICAL CONNECTIONS THAT ARE CAPABLE OF DEVELOPING 125 PERCENT OF THE YIELD STRENGTH OF THE BAR.

- LOW LIFT GROUTING PROCEDURE:**
- CONSTRUCT WALL TO HEIGHT OF 5'-0" ALLOW MORTAR TO SET SUFFICIENTLY TO WITHSTAND GROUT PRESSURE.
  - INSPECT UNITS FOR ALIGNMENT. CLEAN OUT CELLS TO BE FILLED.
  - FILL CELLS TO 1/2" BELOW TOP COURSE.
  - DELAY 3 TO 5 MINUTES PRIOR TO CONSOLIDATING TO ALLOW WATER TO BE ABSORBED BY MASONRY.
  - VERTICAL REINFORCING PRE-MANUFACTURED REBAR POSITIONER SHALL BE LOCATED AT THE TOP OF THE FIRST COURSE AT THE COURSE BELOW THE TOP OF THE WALL AND 4'-0" o.c. (MAX.).

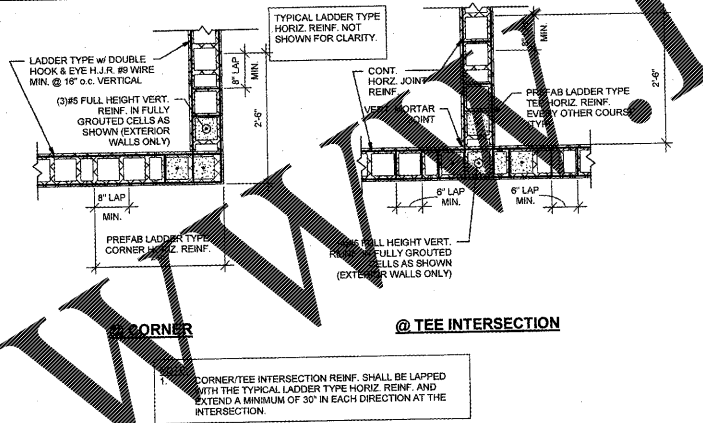
**TYPICAL DETAIL OF LOW-LIFT REINFORCED MASONRY CONSTRUCTION**



**TYPICAL DETAIL OF REINFORCED MASONRY NON-SHEARWALL OPENING**



**TYPICAL DETAIL OF PERMISSIBLE BENDING OF FOUNDATION DOWELS**



**TYPICAL DETAIL OF NON-COLUMN CMU WALL CORNER AND TEE INTERSECTION w/ PREFABRICATED CORNERS & TEES**

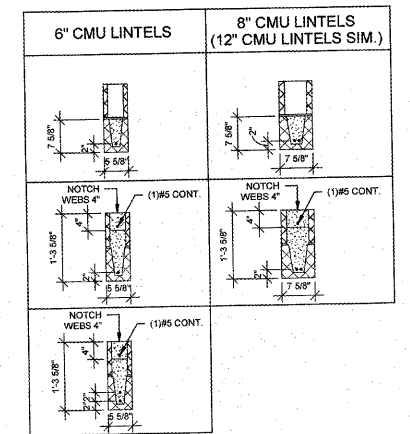
**MASONRY WALL LINTEL SCHEDULE**

OPENING WIDTH	STEEL LINTELS		MASONRY LINTELS					
	MIN.	MAX.	4" WALL THICKNESS	4" WALL DEPTH	6" WALL	8" WALL	12" WALL	
---	2'-0"	---	L8x3x5/16 S.L.V.	7'-5 1/8"	(1)#4	(1)#4 BOTT	(2)#5 BOTT	(2)#5 BOTT
2'-1"	3'-6"	---	L8x3x5/16 S.L.V.	7'-5 1/8"	(1)#4	(1)#4 BOTT	(2)#5 BOTT	(2)#5 BOTT
3'-7"	5'-0"	---	L8x3x3/8 S.L.V.	7'-5 1/8"	(1)#4	(1)#5 BOTT	(2)#5 BOTT	(2)#5 BOTT
5'-1"	6'-6"	---	L8x3x3/8	7'-5 1/8"	---	(1)#5 BOTT	(2)#5 BOTT	(2)#5 BOTT
8'-7"	8'-0"	---	L8x3x3/8	7'-5 1/8"	---	(1)#5 BOTT	(2)#5 BOTT	(2)#5 BOTT
8'-1"	10'-0"	---	L8x3x1/2	15'-5 1/8"	---	(2)#5 BOTT	(2)#5 BOTT	(2)#5 BOTT
10'-1"	12'-0"	---	L8x3x1/2 L.L.V.	15'-5 1/8"	---	(2)#5 BOTT	(2)#5 BOTT	(2)#5 BOTT

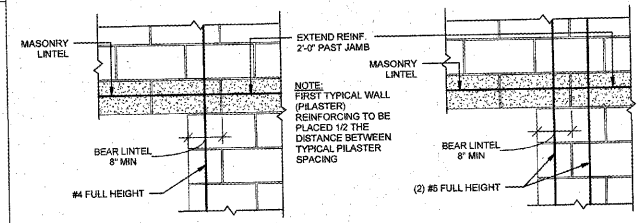
\* 8" BEARING EACH END FOR STEEL  
\*\* 8" BEARING EACH END FOR LUBLOCK

- NOTES:**
- USE EITHER STEEL LINTEL OR MASONRY LINTEL (SEE ARCH. HEAD DETAILS)
  - THIS SCHEDULE TO BE USED UNLESS NOTED OTHERWISE
  - DO NOT USE THIS SCHEDULE IF CONCENTRATED LOAD IS APPLIED TO LINTEL
  - DO NOT USE THIS SCHEDULE IF HEIGHT OF MASONRY ABOVE OPENING IS LESS THAN HALF OF THE OPENING WIDTH

**MASONRY WALL LINTEL SCHEDULE**

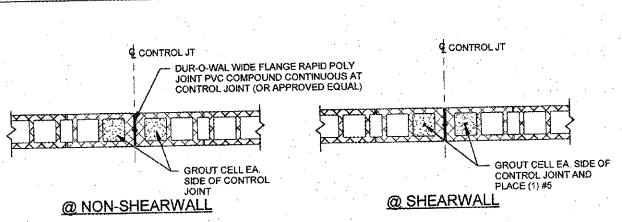


**MASONRY LINTEL REINFORCING CONFIG.**

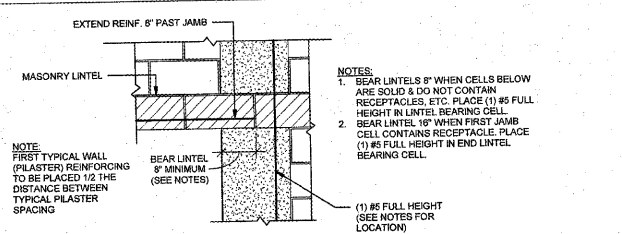


**TYPICAL CMU LINTEL AT INTERIOR WALL**

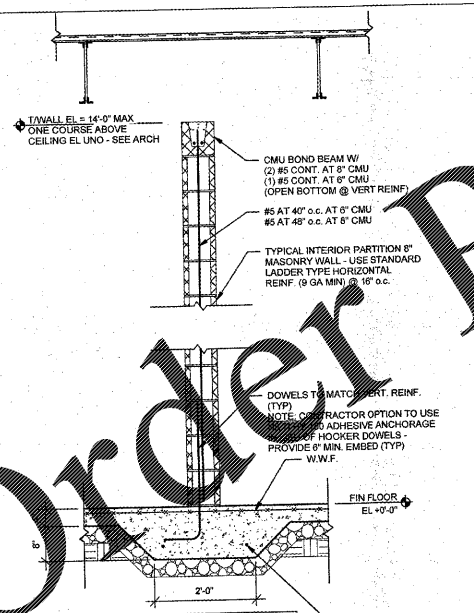
**TYPICAL CMU LINTEL AT EXTERIOR WALL**



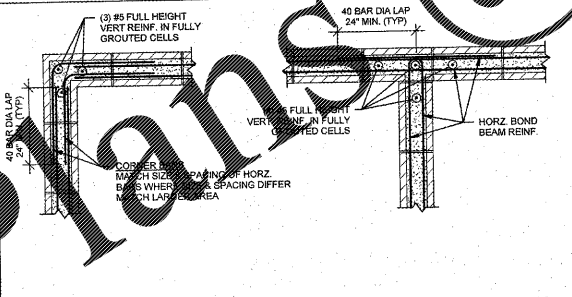
**TYPICAL CMU CONTROL JOINTS**



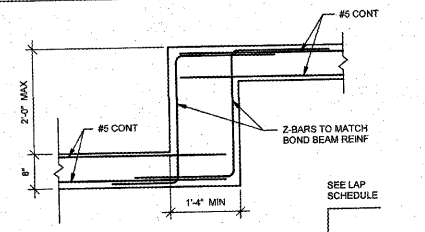
**TYPICAL CMU LINTEL @ NON-SHEARWALL (SEE SHEARWALL ELEVATION FOR SHEARWALL CONDITION)**



**TYPICAL INTERIOR NON-SHEARWALL DETAIL**

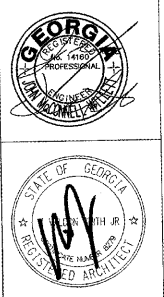


**TYPICAL PLAN OF CORNER AND INTERSECTION DETAILS FOR MASONRY BOND BEAMS**



**TYPICAL DETAIL OF STEP IN CMU**

REVISIONS/ISSUANCES  
NO. DATE DESCRIPTION  
  
**Willett Engineering Company**  
Consulting Structural Engineers  
3528 Habersham at Northside  
Tucker, Georgia 30084  
Phone: (770) 270-9454



**Manley Spangler Smith Architects**  
A Professional Corporation  
525 East Taylor St.  
P.O. Box 185  
Griffin, Georgia 30224  
Office 770.227.5473  
Fax 770.228.3442

PROJECT:  
**Whitewater High School Multi-purpose Building**  
CLIENT:  
Fayette County Schools

SHEET TITLE:  
TYPICAL DETAILS

© 2017 Manley Spangler Smith Architects, PC  
PROJECT NUMBER: 216029  
DATE: 03.23.2017  
SCALE: 3/4" = 1'-0"  
DRAWN BY: SDV  
CHECKED BY: JMW  
SHEET NO. **S4.2**

Order Plans