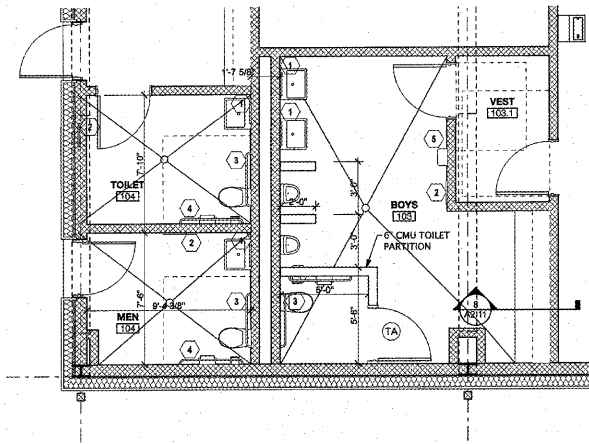


1 PLAN DETAIL
SCALE: 1/4" = 1'-0"

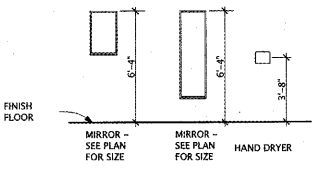


2 PLAN DETAIL
SCALE: 1/4" = 1'-0"

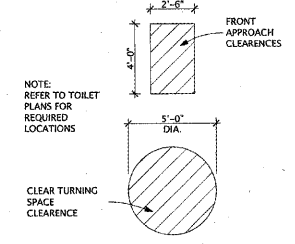
ID	DESCRIPTION	NOTES
1	18" x 30" Mirror	Stainless Steel Channel Frame Mirror
2	24" x 60" Mirror	Stainless Steel Channel Frame Mirror - Vert
3	3'-0" GRAB BAR	
4	3'-6" GRAB BAR	
5	HAND DRYER	

DOOR TYPE	DOOR SIZE
(TA)	3'-0" x 5'-0" x 1 3/4"
(TB)	2'-6" x 5'-0" x 1 3/4"

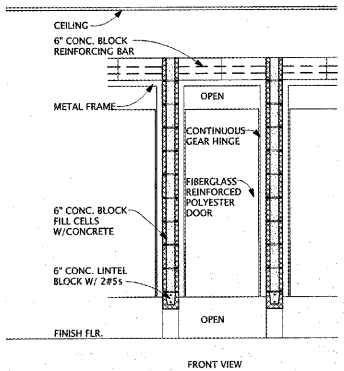
GENERAL NOTES:
1. TOILET PARTITION DOORS: SET HINGES ON IN-SWING DOORS TO HOLD OPEN APPROXIMATELY 30 DEGREES FROM CLOSED POSITION WHEN UNLATCHED. SET HINGES ON OUT-SWINGING DOORS (AND ENTRANCE SWING DOORS) TO REMAIN TO FULLY CLOSED POSITION.



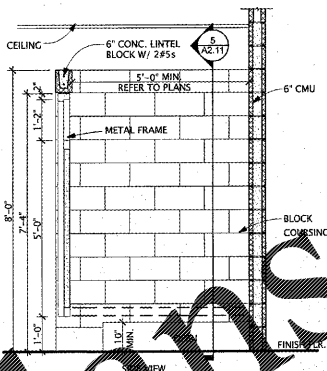
3 ADA MOUNTING HEIGHTS
SCALE: 1/4" = 1'-0"



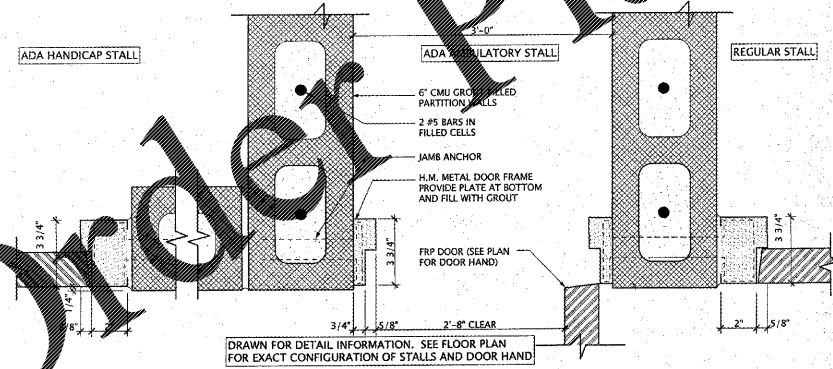
4 ADA CLEARANCES
SCALE: 1/4" = 1'-0"



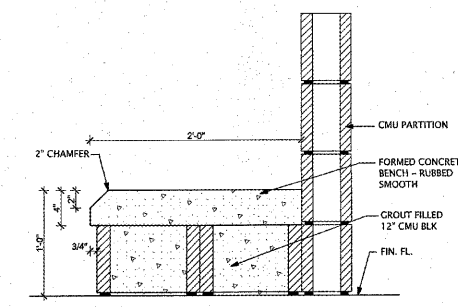
5 TOILET STALL PARTITION SECTION
SCALE: 1/2" = 1'-0"



6 TOILET STALL PARTITION SECTION
SCALE: 1/2" = 1'-0"



7 TOILET PARTITION DOOR DETAIL
SCALE: 3" = 1'-0"

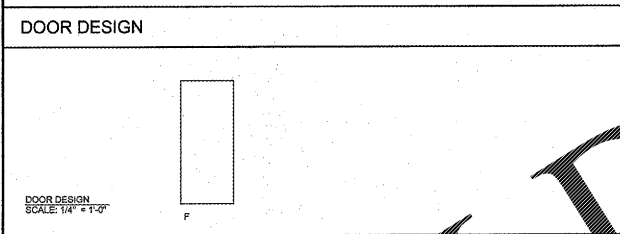


8 BENCH DETAIL
SCALE: 1 1/2" = 1'-0"

DOOR NO.	NO. DOORS	SIZE	DOOR TYPE	ELEVATION	FRAME		MATL.	FIRE RATING	REMARKS
					H	J			
A01	PAIR	6'-0"x7'-0"	F-S	HF-1	9/A2.11	11/2.11	HM		
A02	SNGL	3'-0"x7'-0"	F-S	HF-1	9/A2.11	11/2.11	HM		
A03	SNGL	3'-0"x7'-0"	F-S	HF-1	9/A2.11	11/2.11	HM		
A04	SNGL	3'-0"x7'-0"	F-S	HF-1	9/A2.11	11/2.11	HM		
A05	SNGL	3'-0"x7'-0"	F-S	HF-1	10/A2.11	12/2.11	HM		UNDERCUT DOOR 3/4"
A06	SNGL	3'-0"x7'-0"	F-S	HF-1	9/A2.11	11/2.11	HM		
A07	SNGL	3'-0"x7'-0"	F-S	HF-1	9/A2.11	11/2.11	HM		
A08	SNGL	3'-0"x7'-0"	F-S	HF-1	9/A2.11	11/2.11	HM		
A09	SNGL	3'-0"x7'-0"	F-S	HF-1	9/A2.11	11/2.11	HM		
A10	SNGL	3'-0"x7'-0"	F-S	HF-1	10/A2.11	12/2.11	HM		
A11	SNGL	3'-0"x7'-0"	F-S	HF-1	10/A2.11	12/2.11	HM		
A12	PAIR	6'-0"x7'-0"	F-S	HF-1	10/A2.11	12/2.11	HM		
A13	SNGL	3'-0"x7'-0"	F-S	HF-1	10/A2.11	12/2.11	HM		
A14	SNGL	3'-0"x7'-0"	F-S	HF-1	10/A2.11	12/2.11	HM		

GENERAL NOTES

- NOT USED
- SEE DOOR HARDWARE SCHEDULE FOR CLOSERS FOR DOORS LOCATED IN WALLS INDICATED TO BE SMOKE PARTITIONS SMOKE BARRIERS AND/OR FIRE RATED OPENINGS
- PROVIDE DOOR HARDWARE FOR FIRE RATED OPENINGS INDICATED ON SCHEDULE THAT COMPLIES WITH NFPA STANDARD NO 80 AND REQUIREMENTS OF AUTHORITIES HAVING JURISDICTION. PROVIDE ONLY ITEMS OF DOOR HARDWARE THAT ARE LISTED AND ARE IDENTICAL TO PRODUCTS TESTED BY UL, VARNICK HERBERT, FM, OR OTHER TESTING AND INSPECTING ORGANIZATION ACCEPTABLE TO AUTHORITIES HAVING JURISDICTION FOR USE ON TYPES AND SIZES OF DOORS INDICATED IN COMPLIANCE WITH REQUIREMENTS OF FIRE RATED DOOR AND DOOR FRAME LABELS.
- SEE DOOR HARDWARE SCHEDULE FOR DOORS REQUIRING PANIC HARDWARE.



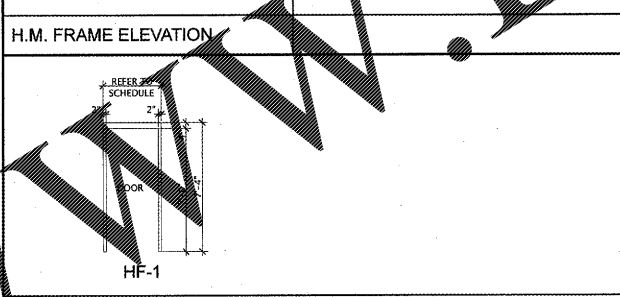
DOOR CONSTRUCTION LEGEND

S - STANDARD STEEL

DOOR TYPE NOMENCLATURE

DESIGN: XX-XX CONSTRUCTION

REFER TO DOOR SCHEDULE FOR SCHEDULED TYPE.



H.M. FRAME ELEVATION

ROOM NAME	ROOM NO.	FLOOR	FINISH SCHEDULE				NOTES
			BASE	WALL	CEILING		
MULTI-PURPOSE	101	SC	NONE	CMU/PLYWD - PAINTED	EXSTR. - PAINTED		
STORAGE	102	SC	NONE	CMU - PAINTED	PLYWD - PAINTED		
BOYS	103	SC	NONE	CMU - PAINTED	PLYWD - PAINTED		
VEST	103.1	SC	NONE	CMU - PAINTED	PLYWD - PAINTED		
MEN	104	SC	NONE	CMU - PAINTED	PLYWD - PAINTED		
TOILET	104	SC	NONE	CMU - PAINTED	PLYWD - PAINTED		
STORAGE	105	SC	NONE	CMU - PAINTED	PLYWD - PAINTED		
MECH.	106	SC	NONE	CMU - PAINTED	PLYWD - PAINTED		
WOMEN	107	SC	NONE	CMU - PAINTED	PLYWD - PAINTED		
GIRLS	108	SC	NONE	CMU - PAINTED	PLYWD - PAINTED		
VEST	108.1	SC	NONE	CMU - PAINTED	PLYWD - PAINTED		

GENERAL NOTES

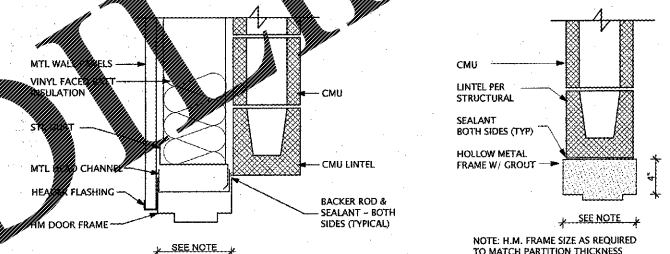
- EXPOSED STRUCTURE PAINTED INCLUDES ROOF AND OR FLOOR DECK
- EXPOSED CONCRETE RETAINING WALLS TO BE A SMOOTH RUBBED CROUT CLEANED FINISH PRIOR TO PAINTING.

FINISH LEGEND

FLOOR
SC (SMOOTH SEALED CONCRETE)

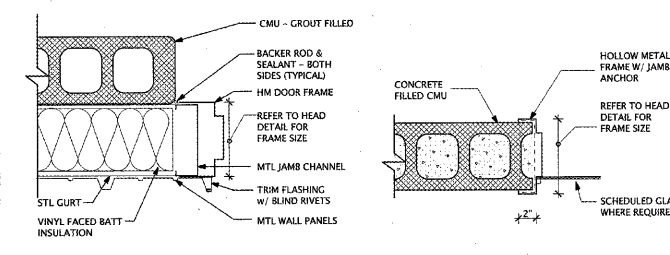
BASE
NONE

CEILING
PLYWD (PLYWOOD - PAINTED)
EXSTR. (EXPOSED STRUCTURE - PAINTED)
CMU (CONCRETE MASONRY UNITS - PAINTED)
PLYWD (PLYWOOD)



9 HEAD DETAIL
SCALE: 1 1/2" = 1'-0"

10 HEAD DETAIL
SCALE: 1 1/2" = 1'-0"



11 JAMB DETAIL
SCALE: 1 1/2" = 1'-0"

12 JAMB DETAIL
SCALE: 1 1/2" = 1'-0"

ISSUANCES

DATE	DESCRIPTION
03.23.2017	RFI

STATE OF GEORGIA REGISTERED ARCHITECT

Manley Spangler Smith Architects
A Professional Corporation

525 East Taylor St.
P.O. Box 880
Gaines, Georgia 30224
Office 770.227.5473
Fax 770.228.3442

PROJECT:
Whitewater High School
Multi-purpose Building

CLIENT:
Fayette County
Schools

SHEET TITLE:
TOILET PLANS, DOOR
SCHEDULE, FINISH
SCHEDULE & DETAILS

© 2017 Manley Spangler Smith Architects, PC
PROJECT NUMBER: 201626
DATE: 03.23.2017
SCALE: AS NOTED
DRAWN BY: BM
CHECKED BY: BSM

SHEET NO.:
A2.11

Order Plans