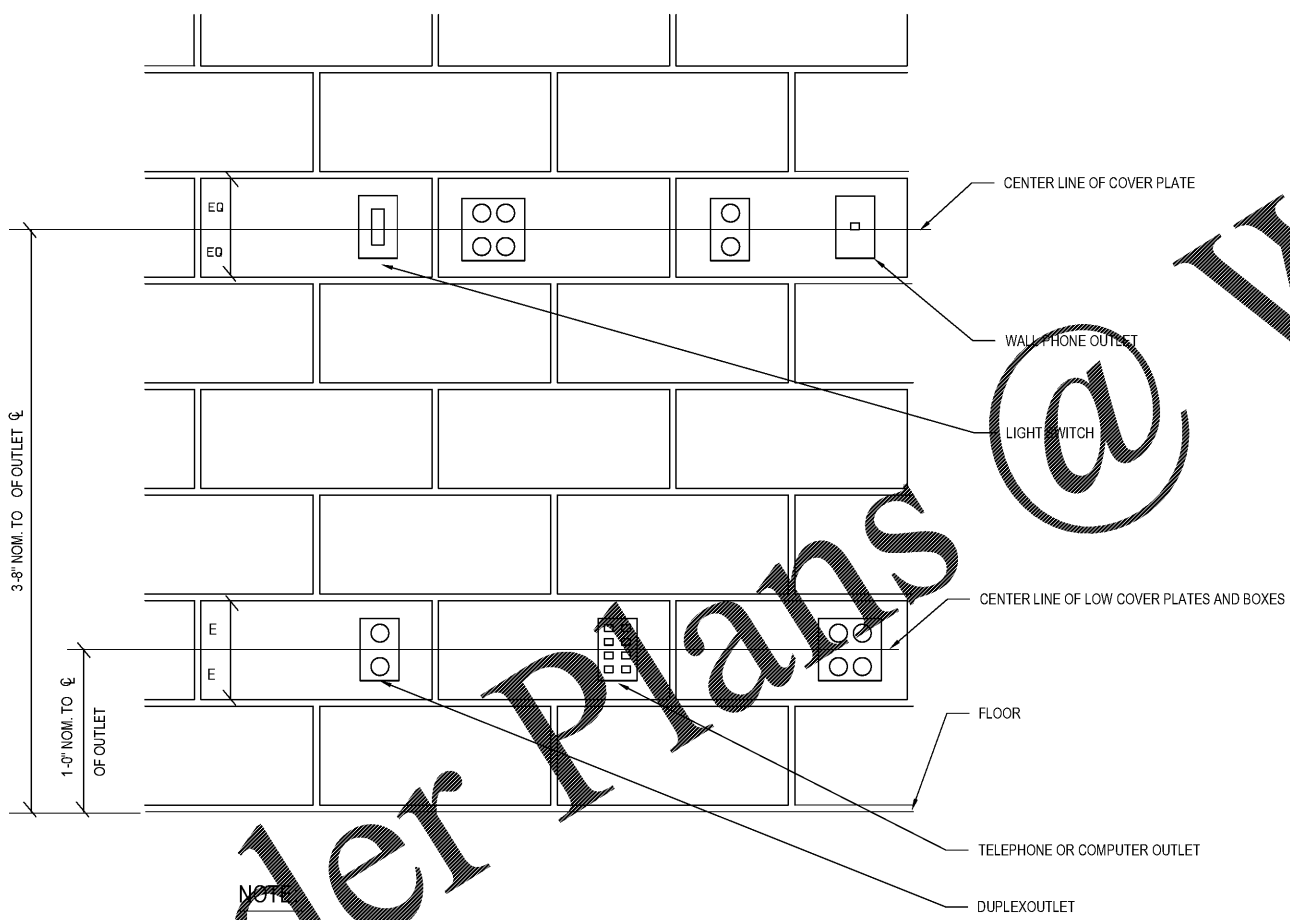
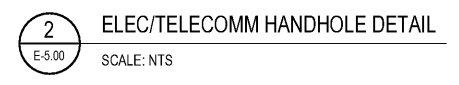


DESCRIPTION	WEIGHT	DIMENSIONS		
		A	B	C
(Stackable) No Base	53# (24.0 kg)	12" (305 mm)	10" (254 mm)	1 1/4" (32 mm)
	62# (28.1 kg)	18" (457 mm)	16" (406 mm)	1 1/4" (32 mm)
W/ No Base (2) Mouseholes	49# (22.2 kg)	12" (305 mm)	10" (254 mm)	1 1/4" (32 mm)
	60# (27.2 kg)	18" (457 mm)	16" (406 mm)	1 1/4" (32 mm)
W/ Base	63# (28.6 kg)		10" (254 mm)	N/A
	90# (40.8 kg)	18 1/2" (470 mm)	16" (406 mm)	N/A
W/ No Base, Heavy Duty, W/ W6 X 9 Wide Flange Beam	509# (231 kg)	36" (914 mm)	33" (838 mm)	N/A
	654# (297 kg)	48" (1219 mm)	45" (1143 mm)	N/A
W/ Base, Heavy Duty, W/ W6 X 9 Wide Flange Beam	658# (298 kg)	36 1/2" (927 mm)	33" (838 mm)	N/A
	800# (363 kg)	48 1/2" (1232 mm)	45" (1143 mm)	N/A

DESCRIPTION	PART NO.	WEIGHT	DIMENSIONS	
			D	E
W/ No Base	PG1324EA08	25# (11.3 kg)	8 3/4" (222 mm)	1" (25 mm)
W/ Base	PG1324RA08	35# (15.9 kg)	9 1/4" (235 mm)	N/A

Dimensions in parenthesis are metric equivalent.



NOTE:
 ALL OUTLET, SWITCHES ETC, MUST BE LOCATED SO THE COVER PLATES OR BOXES ALIGN IN THE CENTER OF THE BLOCK VERTICALLY.
 NO PARTS MAY FALL ON A MORTAR JOINT IN THE BLOCK.

Order Plans
 1
 E-5.00
 CMU/MASONRY WALL OUTLET INSTALLATION DETAIL
 SCALE: NTS

SYMBOL	DATE	BY	REVISION

PRELIMINARY
 PRELIMINARY
 PRELIMINARY

CLIENT: City of Dunwoody
 PROJECT: BASEBALL FACILITIES AT BROOK RUN PARK

DESIGNED: [] DRAWN: [] CHECKED: [] DATE: []
 PROJECT NO: C-1610-10 SCALE: AS SHOWN
 DRAWING TITLE: ELECTRICAL DETAILS