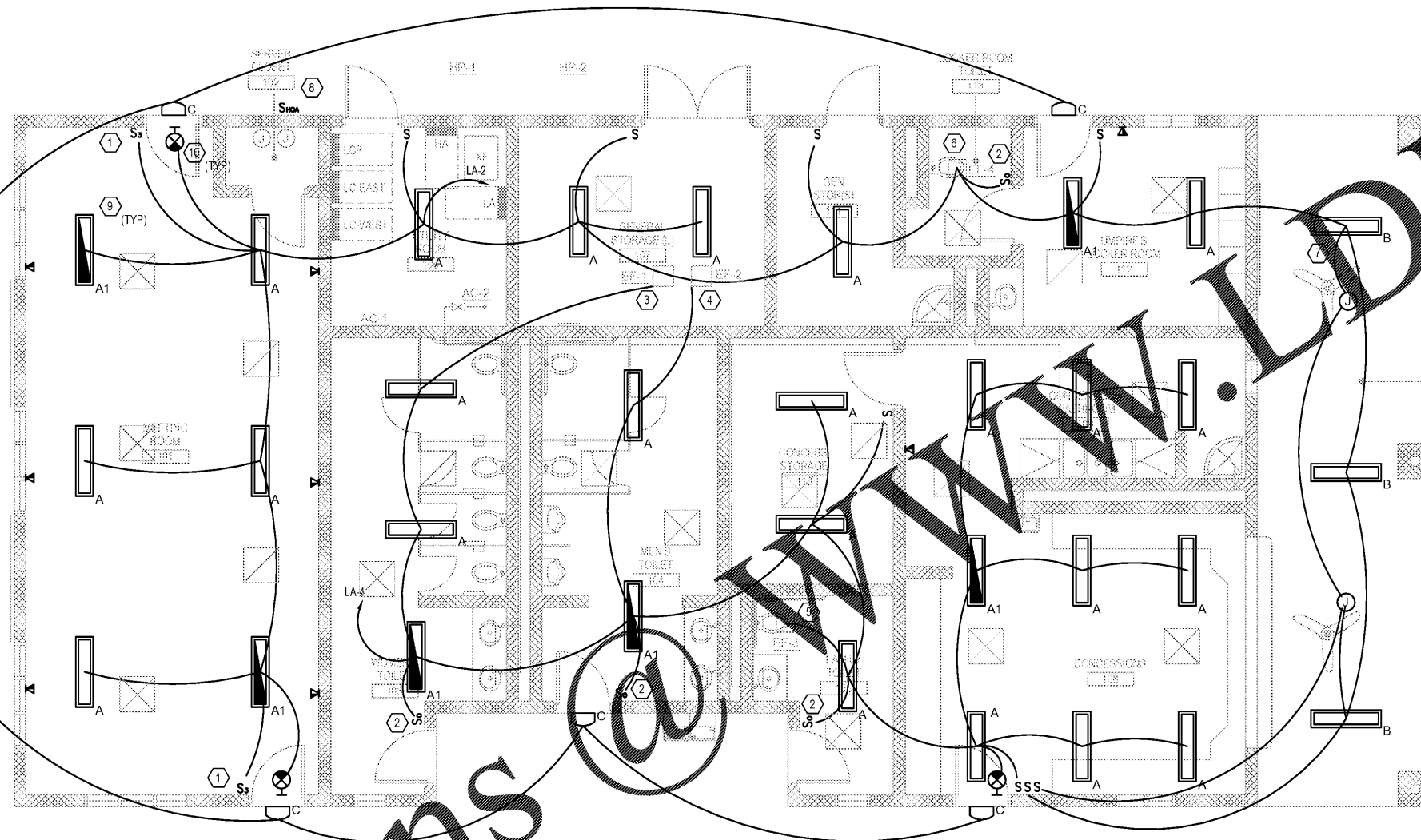


Order Plans



1 FIELDHOUSE LIGHTING PLAN
E-1.02 SCALE: 1/4" = 1'-0"

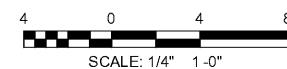


NOTE:

- SEE E-0.01 FOR GENERAL NOTES AND ABBREVIATIONS.

KEYED NOTES:

- PROVIDE 3-WAY SWITCHES, SWITCH LEGS, AND TRAVELERS AS REQUIRED IN THE MEETING ROOM
- PROVIDE OCCUPANCY SENSORS IN THE TOILETS
- INTERLOCK E1 WITH WOMEN'S TOILET LIGHTS
- INTERLOCK E2 WITH MEN'S TOILET LIGHTS
- INTERLOCK E3 WITH FAMILY TOILET
- E-4 WITH LIGHT KIT WILL BE THE ONLY LIGHT FIXTURE IN LOCKER ROOM TOILET. PROVIDE OCCUPANCY SENSOR
- INTERCEPT CIRCUIT LA-2 FOR THE BIG ASS FANS UNDER COVERED AREA. PROVIDE SEPARATE SWITCH LEG. PROVIDE BLOCKING WHERE REQUIRED TO MOUNT FIXTURES
- PROVIDE HOA SWITCH ON EAST WALL EXTERIOR TO THE UTILITY ROOM AND SERVER CLOSET TO SERVE PARKING/WALL PACK LIGHTING.
- EMERGENCY / BATTERY BACKUP FIXTURES TO BE CONNECTED TO AN UNSWITCHED HOT LEG, DUAL INPUT DRIVER FOR EMERGENCY OPERATION IN PARALLEL WITH NORMAL OPERATION.
- EXIT LIGHTS TO BE CONNECTED TO UNSWITCHED HOT LEG.



Robert and Company
Engineers, Architects, Planners
225 Foxboro Street, N.E. International Tower
Atlanta, Georgia 30316
404.577-4000 FAX 404.577-7119

SKYLINE
ENGINEERING & CONSTRUCTION
P-888.706.0661 F-770.217.7530 www.skyline-ec.com

REVISION	DATE	BY

PRELIMINARY
PRELIMINARY
PRELIMINARY

City of
Dunwoody
PROJECT
BASEBALL FACILITIES AT
BROOK RUN PARK

DESIGNED	DRAWN	CHECKED	DATE
CLO	CLO	MKK	SCALE
PROJECT NO.	C-1610-10	SCALE	AS SHOWN
DRAWING TITLE	FIELDHOUSE LIGHTING PLAN		

DRAWING NO.
E-1.02
SHEET OF

RAC #: 1700200