

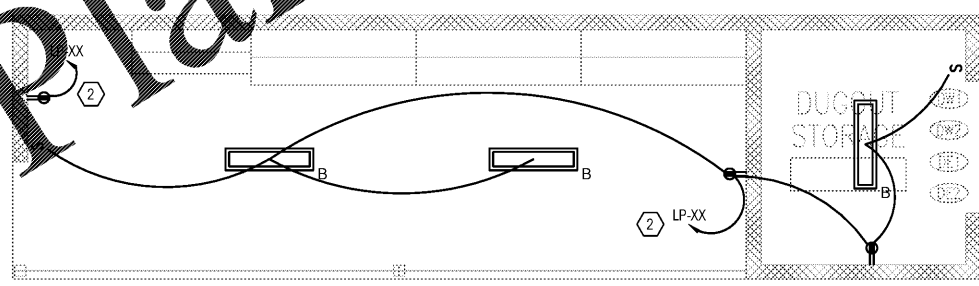
NOTE:

- 1. SEE E-0.01 FOR GENERAL NOTES AND ABBREVIATIONS.

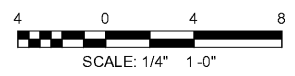
KEYED NOTES:

- 1 SPORTS LIGHTING CONTACTORS PROVIDED BY MUSCO
- 2 PROVIDE TWO CIRCUITS TO EACH DUGOUT. SEE PHOTOMETRIC SCHEDULE. TYPICAL DUGOUT
- 3 60A NONFUSED DISCONNECT
- 4 60A DISCONNECT PROVIDED AT EACH DUGOUT
- 5 3/4" x 4-02" RECEPTACLE HEIGHTS IN CONCESSIONS AREA
- 6 STUB OUT TWO 1/2" CONDUIT WITH TWO (2) #12GND FOR FUTURE EQUIPMENT.
- 7 PROVIDE 3/4" x 10" COPPER CLAD GROUND ROD WITH #4/0 GROUND TO SERVICE ENTRANCE PANEL HA.

1 FIELDHOUSE POWER PLAN
E-1.01 SCALE: 1/4" = 1'-0"



2 TYPICAL DUGOUT POWER AND LIGHTING PLAN
E-1.01 SCALE: 1/4" = 1'-0"



Order Plans @

WWW.LDILLINE.COM

LDI and Company
Electrical Engineers, Architects, Planners
225 Franklin Street, N.E. International Tower
Atlanta, Georgia 30308
404-577-4000 FAX 404-577-7119

SKYLINE
ENGINEERING & CONSTRUCTION
P-888.706.0661 F-770.217.7530 www.skyline-ec.com

| SYMBOL | DATE | BY | REVISION |
|--------|------|----|----------|
| | | | |
| | | | |
| | | | |

PRELIMINARY
PRELIMINARY
PRELIMINARY

City of
Dunwoody
PROJECT
BASEBALL FACILITIES AT
BROOK RUN PARK

DESIGNED DRAWN CHECKED DATE
CLO MKK
PROJECT NO. C-1610-10 SCALE AS SHOWN
DRAWING TITLE
FIELDHOUSE POWER PLAN AND
TYPICAL DUGOUT PLAN

DRAWING NO.
E-1.01
SHEET OF

RAC #: 1700200