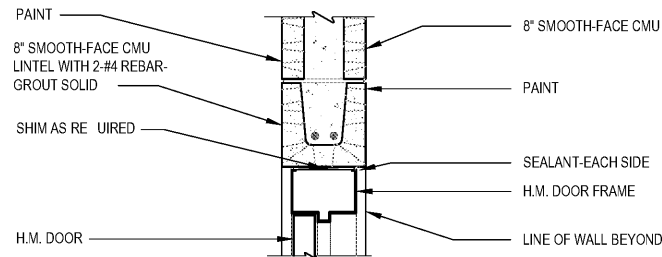
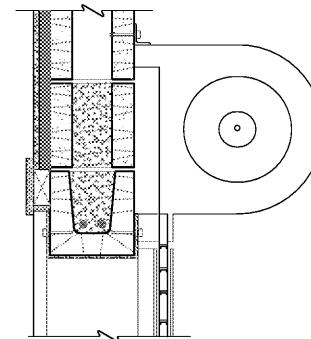


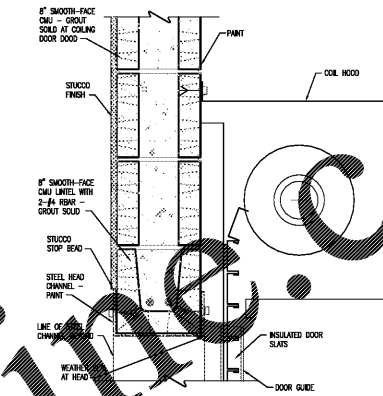
A DOOR HEAD DETAIL
A-6.03 SCALE: 1 1/2" 1'-0"



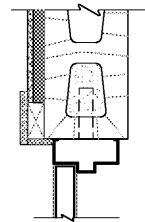
D DOOR HEAD DETAIL
A-6.03 SCALE: 1 1/2" 1'-0"



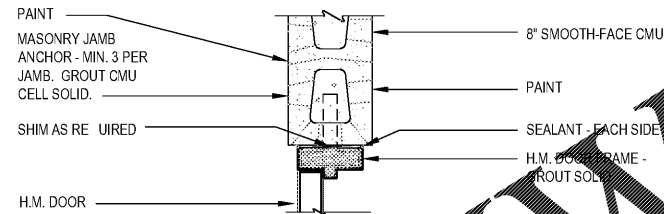
G DOOR HEAD DETAIL
A-6.03 SCALE: 1 1/2" 1'-0"



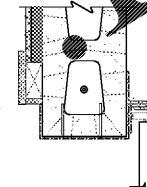
K DOOR HEAD DETAIL
A-6.03 SCALE: 1 1/2" 1'-0"



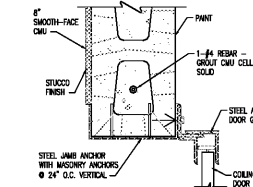
B DOOR JAMB DETAIL
A-6.03 SCALE: 1 1/2" 1'-0"



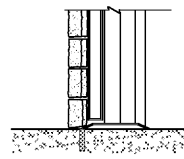
E DOOR JAMB DETAIL
A-6.03 SCALE: 1 1/2" 1'-0"



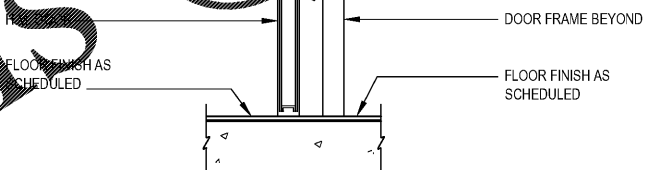
H DOOR JAMB DETAIL
A-6.03 SCALE: 1 1/2" 1'-0"



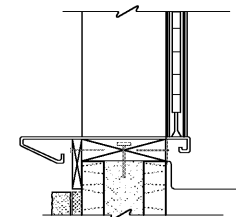
L DOOR JAMB DETAIL
A-6.03 SCALE: 1 1/2" 1'-0"



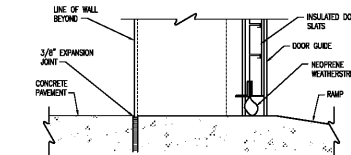
C DOOR SILL DETAIL
A-6.03 SCALE: 1 1/2" 1'-0"



F DOOR SILL DETAIL
A-6.03 SCALE: 1 1/2" 1'-0"



J DOOR SILL DETAIL
A-6.03 SCALE: 1 1/2" 1'-0"



M DOOR SILL DETAIL
A-6.03 SCALE: 1 1/2" 1'-0"



Order Plans @ WWW.WLDLINE.COM

Robert and Company
Engineers, Architects, Planners
225 Foxboro Street, N.E. International Tower
Atlanta, Georgia 30316
404-577-4000 FAX 404-577-7119

SKYLINE
ENGINEERING & CONSTRUCTION
P: 888.706.0661 F: 770.217.7530 www.skyline-ec.com

SYMBOL	DATE	BY	REVISION

PRELIMINARY
PRELIMINARY
PRELIMINARY

City of
Dunwoody
PROJECT
BASEBALL FACILITIES AT
BROOK RUN PARK

DESIGNED DRAWN CHECKED DATE
AH TS AH
PROJECT NO. C-1610-10 SCALE AS SHOWN
DRAWING TITLE OPENING DETAILS

DRAWING NO. A-6.03
SHEET OF

RAC #: 1700200