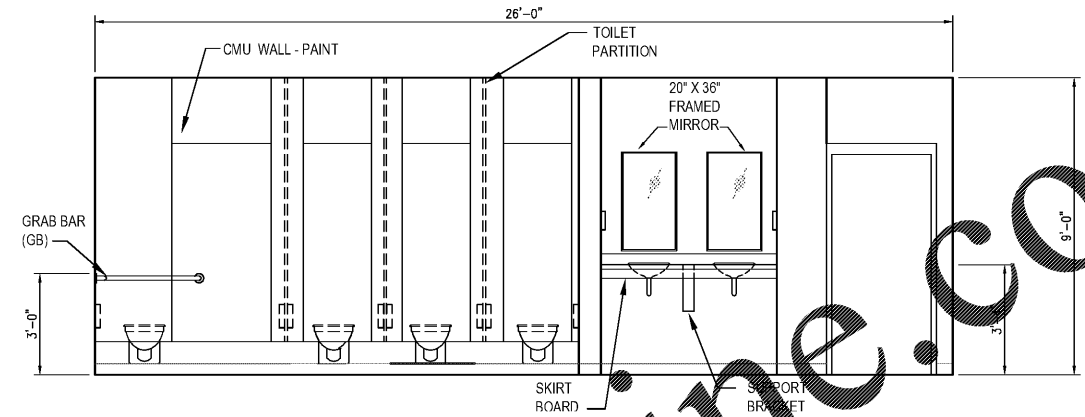
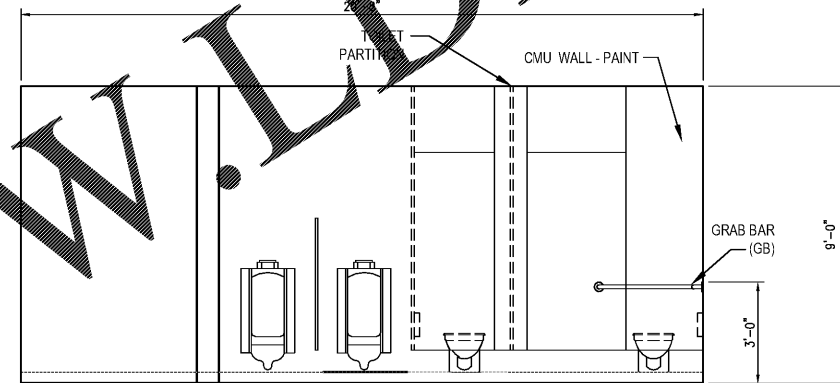


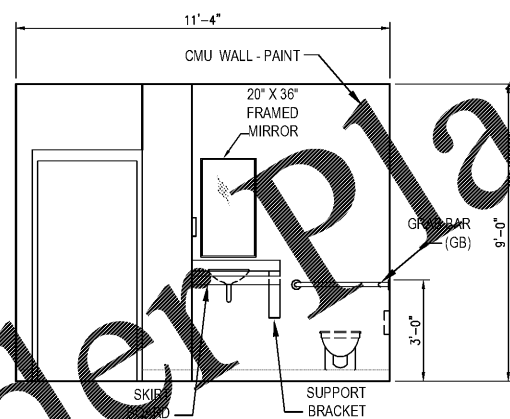
1 CONCESSIONS ENLARGED PLAN
A-4.01 SCALE: 3/8" 1'-0"



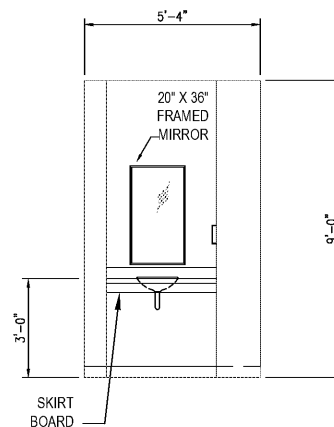
2 WOMEN'S TOILET INTERIOR ELEVATION
A-4.01 SCALE: 3/8" 1'-0"



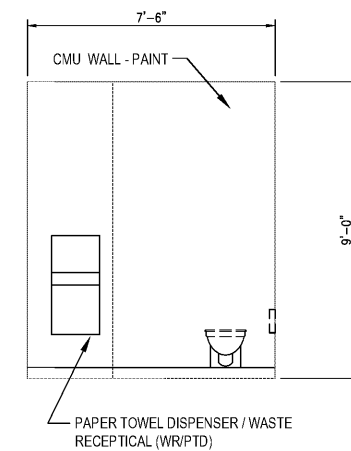
3 MEN'S TOILET INTERIOR ELEVATION
A-4.01 SCALE: 3/8" 1'-0"



4 FAMILY TOILET INTERIOR ELEVATION
A-4.01 SCALE: 3/8" 1'-0"



5 UMPIRE'S LOCKER ROOM VANITY
A-4.01 SCALE: 3/8" 1'-0"



6 UMPIRE'S LOCKER ROOM TOILET
A-4.01 SCALE: 3/8" 1'-0"



SCALE: 3/8" 1'-0"

Robert and Company
Engineers, Architects, Planners
225 Foxboro Street, N.E. International Tower
Atlanta, Georgia 30316
404-577-4000 FAX 404-577-7119

SKYLINE
ENGINEERING & CONSTRUCTION
P-888.706.0661 F-770.217.7530 www.skyline-ec.com

SYMBOL	DATE	BY	REVISION

PRELIMINARY
PRELIMINARY
PRELIMINARY

City of
Dunwoody
PROJECT
BASEBALL FACILITIES AT
BROOK RUN PARK

DESIGNED	DRAWN	CHECKED	DATE
AH	TS	AH	
PROJECT NO.	C-1610-10	SCALE	AS SHOWN
DRAWING TITLE	INTERIOR ELEVATIONS		

DRAWING NO.
A-4.01
SHEET OF

RAC #: 1700200