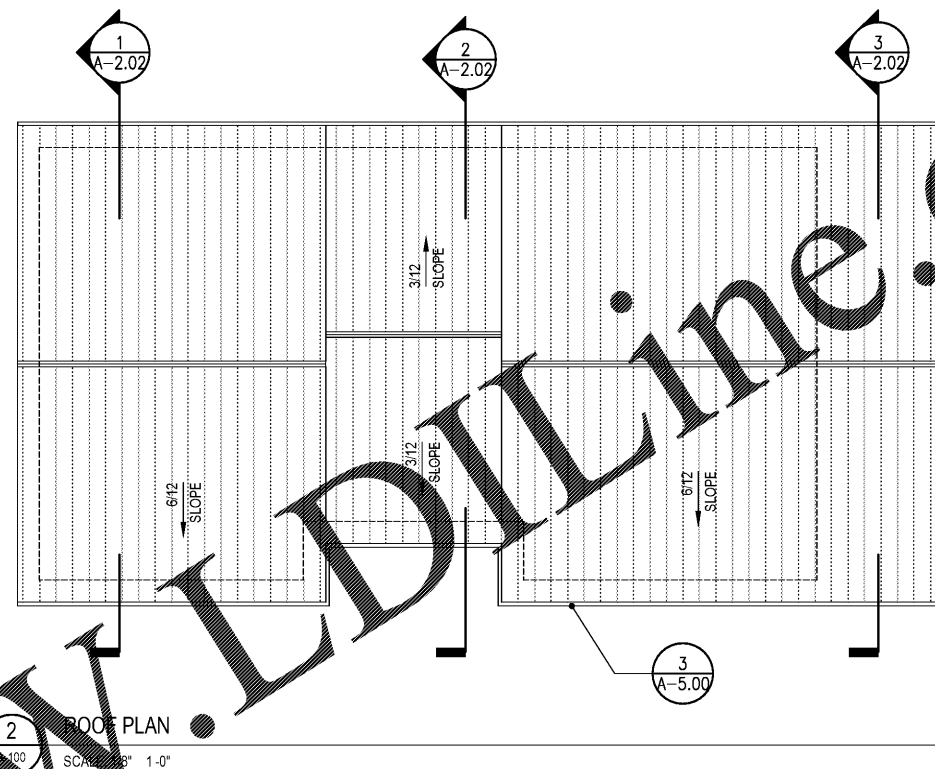
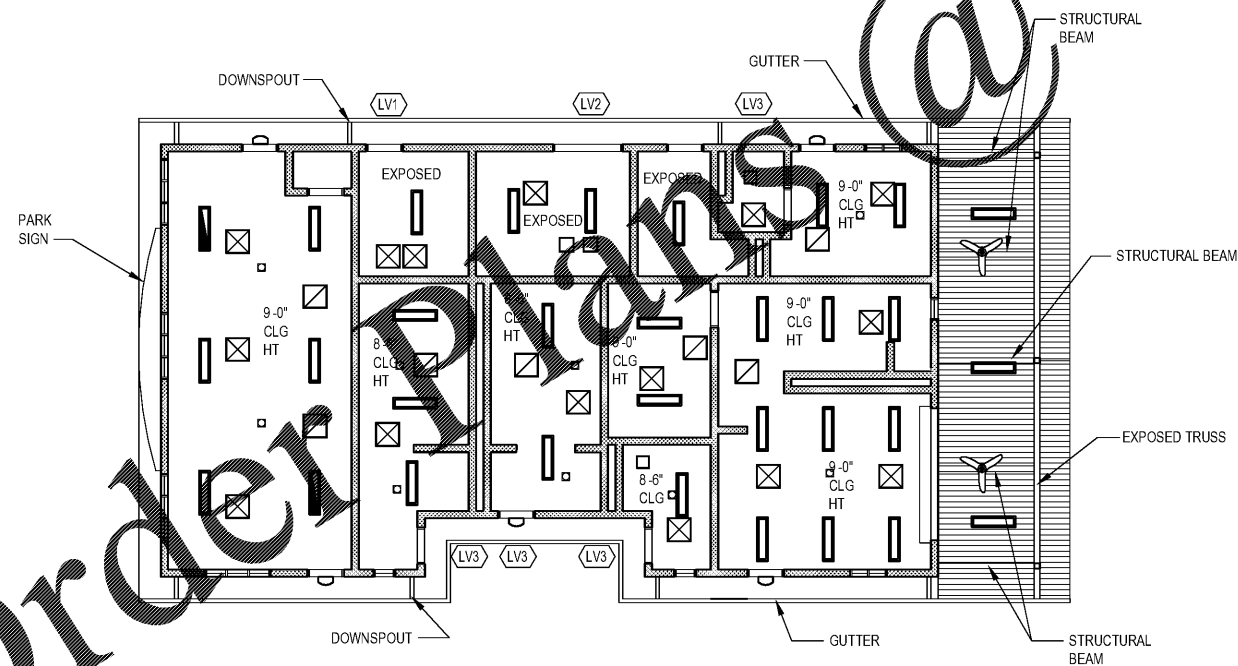


1 FLOOR PLAN  
SCALE: 1/8" = 1'-0"



2 ROOF PLAN  
SCALE: 1/8" = 1'-0"



3 REFLECTED CEILING PLAN  
SCALE: 1/8" = 1'-0"

**FLOOR PLAN LEGEND:**

- CMU WALL
- 5'-0" WHEELCHAIR MANEUVERING CLEARANCE -- SHOWN FOR GRAPHIC PURPOSES ONLY

**REFLECTED CEILING KEY PLAN:**

**ARCHITECTURAL:**

- PLYWOOD CEILING
- TONGUE / GROVE CEILING
- DAYLIGHT TUBES

**MECHANICAL:**

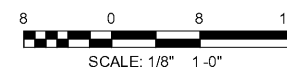
- AIR INTAKE GRILLE
- ELECTRIC UNIT HEATER
- HEAD PUMP UNIT
- EXHAUST FAN GRILLE
- CEILING MOUNTED CASSETTE AHU

**ELECTRICAL:**

- FLUORESCENT LIGHT FIXTURE 1'-0" X 4'-0"
- FLUORESCENT LIGHT FIXTURE 1'-0" X 1'-0"
- FAN

**RCP / ROOF PLAN NOTES:**

- CEILING HEIGHTS. WHERE THE CEILING HEIGHT IS NOT NOTED FOR A SPACE, SEE FINISH SCHEDULE FOR FINISH CEILING HEIGHTS.
- INSTALL ACCESS PANEL AT TOILET EXHAUST FAN AND CASSETTE UNIT.
- COORDINATE INSTALLATION OF SMALL DIAMETER ROOF PENETRATIONS ( PLUMBING VENT, DAYLIGHT TUBES, ETC. ) TO ENSURE PENETRATION OCCURS BETWEEN METAL ROOF PANEL AND STANDING SEAMS.



WWW.LDLINE.COM

Order Plans @

Skyline Engineering & Construction  
 P-888.706.0661 F-770.217.7530 www.skyline-ec.com  
 25 Foxhollow Street, N.E. International Tower  
 Atlanta, Georgia 30328  
 404.577.4000 FAX 404.577.7119

SYMBOL	DATE	BY	REVISION

CLIENT: City of Dunwoody  
 PROJECT: BASEBALL FACILITIES AT BROOK RUN PARK  
 DRAWING TITLE: FIELDHOUSE FLOOR, ROOF AND REFLECTED CEILING PLAN  
 PROJECT NO: C-1610-10  
 SCALE: AS SHOWN  
 DESIGNED: [ ] DRAWN: [ ] CHECKED: [ ] DATE: [ ]  
 AH: [ ] TS: [ ] AH: [ ]  
 SHEET OF: A-1.00  
 RAC #: 1700200