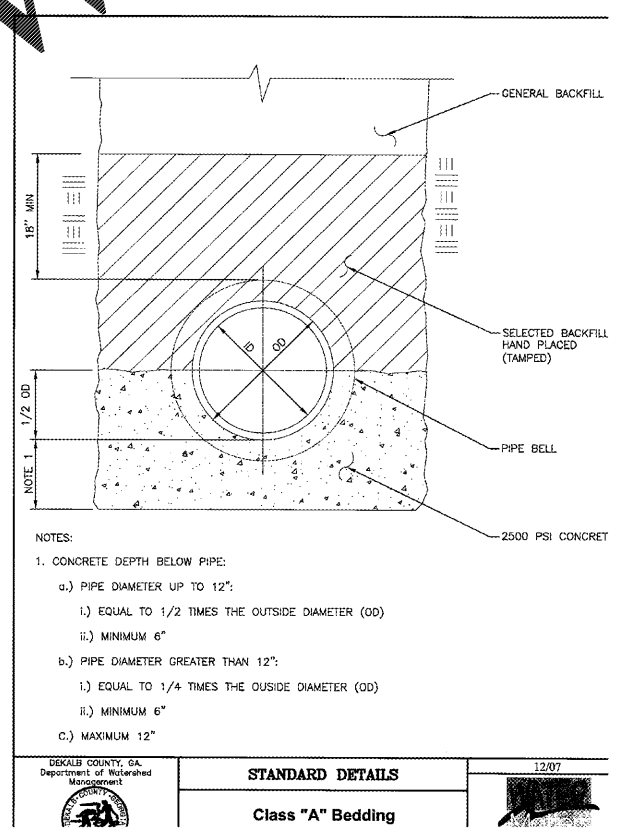
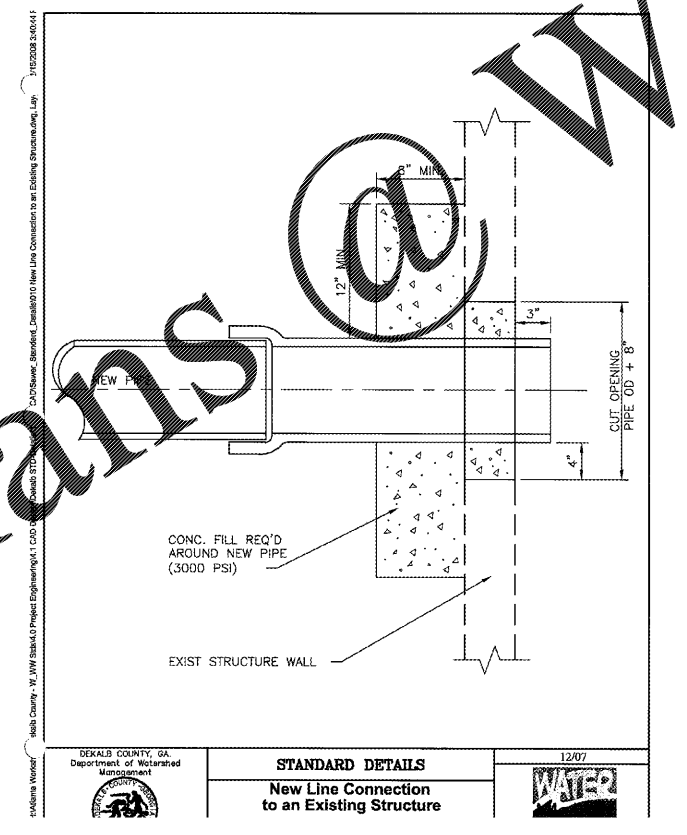
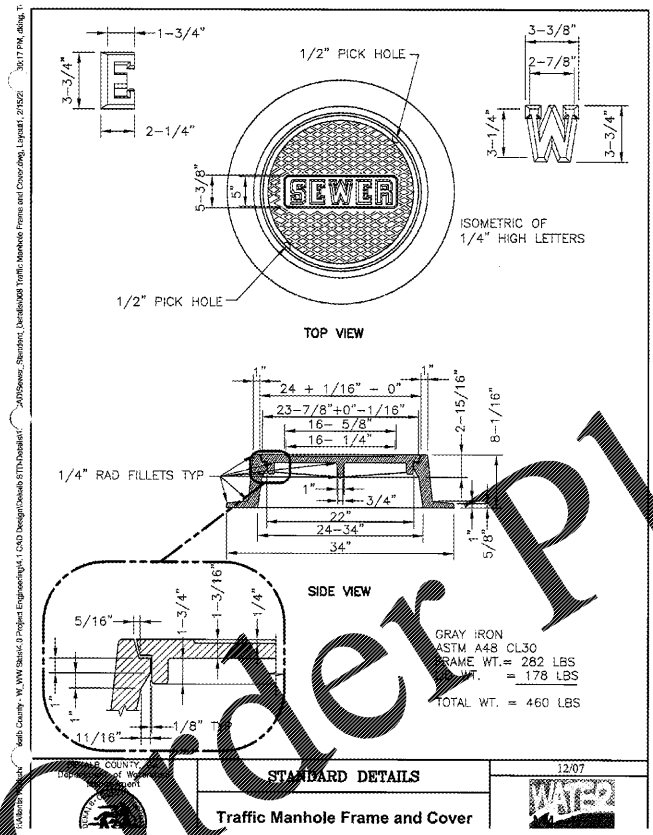


1 PRECAST SEWER MANHOLE
C4.3 N.T.S.

2 MANHOLE JOINT
C4.3 N.T.S.

3 CONCRETE COLLAR
C4.3 N.T.S.

4 MANHOLE FRAME & COVER
C4.3 N.T.S.



5 TRAFFIC MANHOLE COVER
C4.3 N.T.S.

6 CONNECTION TO EXISTING SEWER MANHOLE
C4.3 N.T.S.

7 CLASS "A" BEDDING
C4.3 N.T.S.

UTILITY DETAILS -SEWER

City of Dunwoody
Baseball Facilities at Brook Run Park

CLIENT: City of Dunwoody
DESIGNED: MDC
DRAWN: BKJ
CHECKED: DATE 04/12/2017
SCALE: PROJECT NO. UTILITY DETAILS
DRAWING TITLE: UTILITY DETAILS
DRAWING NO. C-4.3
SHEET OF

SKYLINE
Skyline Engineering and Construction Company
2700 Peachtree Street, N.E., Suite 3000
Atlanta, Georgia 30328
P: 888.706.0861 F: 770.217.7530 www.skyline-ec.com

NO.	DATE	BY	REVISION