

NEW STORE

**OLD NAVY**

GAP INC.  
CORPORATE ARCHITECTURE  
HARRISON STREET  
SAN FRANCISCO, CA 94105

REPS. ID: 000054156

STORE NUMBER: 4458

STORE LOCATION:  
VINELAND  
8231 VINELAND AVENUE  
SUITE 2151  
ORLANDO, FLORIDA 32821

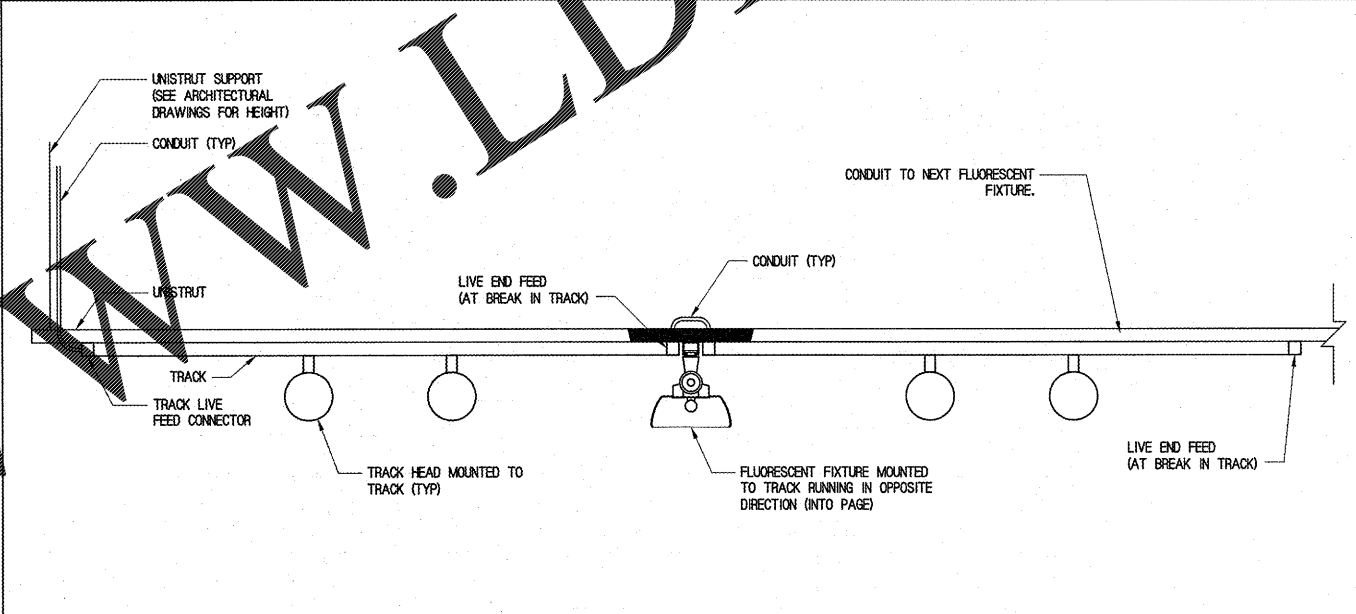
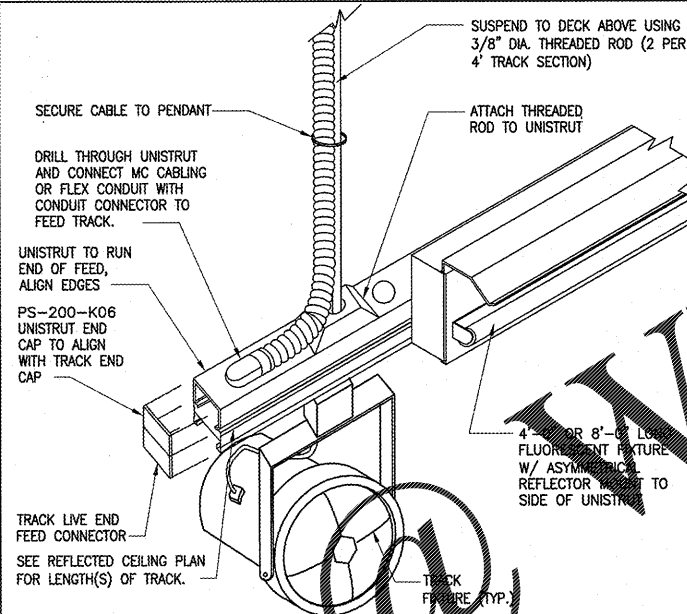
DESIGN TYPE: P3  
GENERATION: 17Q12  
PROTOTYPE DATE: 07/18/16  
OPENING: 2017

4' AND 5' SIGNAGE POWER CONNECTION POINT

NOT TO SCALE  
208

2' AND 3' SIGNAGE POWER CONNECTION POINT

NOT TO SCALE  
209



CONSULTANT INFO:

**EBA**

EBA Consulting Engineers  
6615 Vaught Ranch Road, Suite 100  
Austin, Texas 78730-2314 USA  
512.744.4400 main 512.744.4444 fax  
www.eba.com

State of Registration: FLORIDA  
Firm Registration No. 26645  
EBA Project No. 20169549

PROFESSIONAL STAMP:  
SARA HAML  
LICENSE  
No. 74882  
STATE OF FLORIDA  
PROFESSIONAL ENGINEER  
4/7/17

ARCHITECT INFO:

**B|R|R**  
architecture

ARCHITECT OF RECORD: BRR ARCHITECTURE, INC.  
6700 ANTOCH PLAZA, SUITE 300, MERASAP, KANSAS 66204

NOT USED

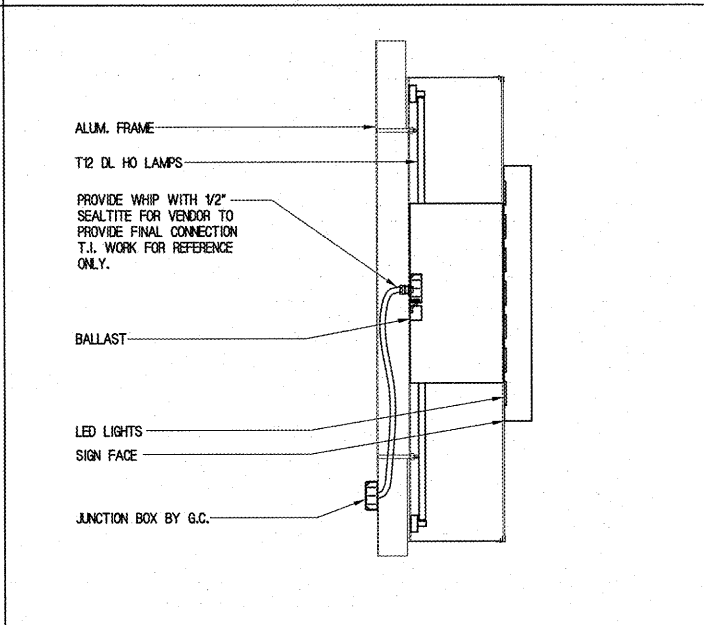
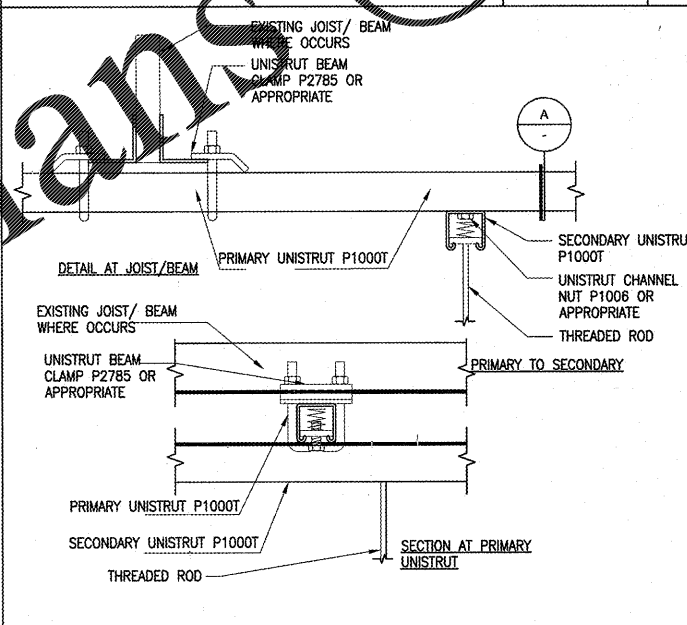
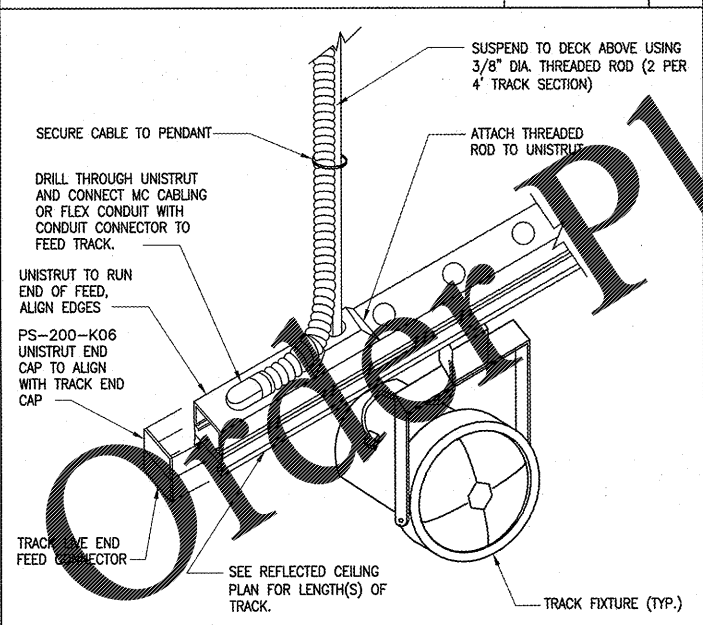
NOT TO SCALE  
---

PERIMETER LIGHT AND TRACK LIGHTING DTL

NOT TO SCALE  
205

UNISTRUT FIXTURE MOUNTING DETAIL (DOWNLIGHTS)

NOT TO SCALE  
201



TRACK LIGHTING DETAIL

NOT TO SCALE  
206

ATTACHMENT DETAIL

NOT TO SCALE  
204

SIGNAGE CONNECTION DETAIL

NOT TO SCALE  
203

ISSUE TYPE:

PERMIT/BID: 04/07/17

REVISIONS:

DRAWN BY: DPR  
A/E JOB NUMBER: 85013011

TITLE SHEET:  
ELECTRICAL DETAILS

SHEET NUMBER:  
**E11-0**