



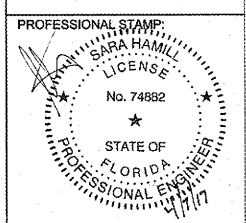
G.P.I. INC.
CORPORATE ARCHITECTURE
HARRIS STREET
SAN FRANCISCO, CA 94105

REPS. I.D.: 000054156
STORE NUMBER: 4458
STORE LOCATION:
VINELAND
8231 VINELAND AVENUE
SUITE 2151
ORLANDO, FLORIDA 32821

DESIGN TYPE: P3
GENERATION: 17Q12
PROTOTYPE DATE: 07/18/16
OPENING: 2017

CONSULTANT INFO:

EEA Consulting Engineers
6615 Vaught Ranch Road, Suite 100
Austin, Texas 78730-2314 USA
512.744.4100 main 512.744.4444 fax
www.eeace.com
State of Registration: FLORIDA
Firm Registration No. 26645
EBA Project No. 20169549



ARCHITECT INFO:

ARCHITECT OF RECORD: B|R|R ARCHITECTURE, INC.
6700 AVANTOON PLAZA, SUITE 200, HERNDON, VIRGINIA 22042

ISSUE TYPE:
PERMIT/BID: 04/07/17

REVISIONS:

DRAWN BY: DPR
A/E JOB NUMBER: 65013011
TITLE SHEET:
EAS DETAILS

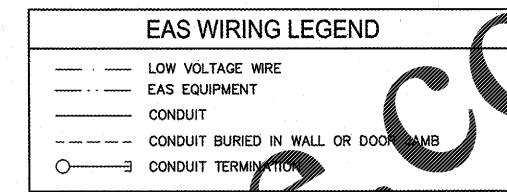
SHEET NUMBER:
E5-0

EAS CODED NOTES (S10-2 ONLY)

- (100) 3/4" THICK, GRADE A PLYWOOD EAS BACKBOARD. SIZE AS INDICATED, SEE ARCH DRAWINGS FOR LOCATION.
- (101) DEDICATED ISOLATED GROUND DUPLEX RECEPTACLE. MOUNT RECEPTACLE AT 12"-0" A.F.F. ABOVE ENTRY SOFFIT NEXT TO PLYWOOD BACKBOARD. VERIFY LOCATION WITH G.C. PRIOR TO ROUGH IN.
- (102) EVOLVE S10 ELECTRONICS ENCLOSURE (E.E.). (MUST BE WITHIN 30 LINEAR FEET OF THE FURTHEST F10 ANTENNA. ONE (1) E.E. PER TWO (2) F10 ANTENNAS.)
- (103) EAS - S10 CABLE ASSEMBLY #1 (MAX 30 LINEAR FT FROM THE ELECTRONICS UNIT).
- (104) J-BOX FOR CONNECTION TO SECONDARY BACKBOARD (IF REQUIRED.) PROVIDE 3/4" CONDUIT WITH PULLSTRING BACK TO SECONDARY BACKBOARD.
- (105) POWER SUPPLIE(S). VERIFY EXACT LOCATION WITH G.C. PRIOR TO ROUGH IN.
- (200) EVOLVE S10 ANTENNA. MOUNTED TO DOOR FRAME / MULLION.
- (201) 3/4" CONDUIT WITH (2) PULLSTRINGS DOWN THROUGH PORTAL WALL TO 56" A.F.F. CAVITY.
- (202) 1" DIAMETER HOLE AT 56" A.F.F. ROUTE CONDUIT (201) TO THE HOLES ON THE DOOR FRAME / MULLION. CONTRACTOR TO VERIFY EXACT OPENING LOCATIONS WITH EAS VENDOR.

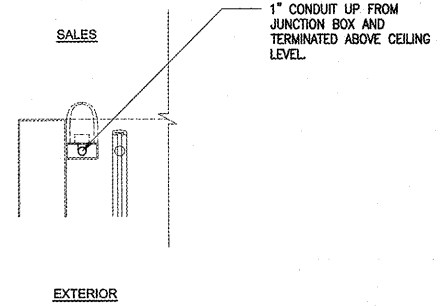
EAS GENERAL NOTES

1. CONTRACTOR SHALL PROVIDE ALL ABOVE SLAB CONDUIT, PULL WIRE, JUNCTION BOXES FOR EAS SYSTEM.
2. ALL LOW VOLTAGE WIRING AND EAS EQUIPMENT TO BE INSTALLED, BY VENDOR.
3. PROVIDE TEMPORARY COVERPLATE FOR ALL J-BOXES.



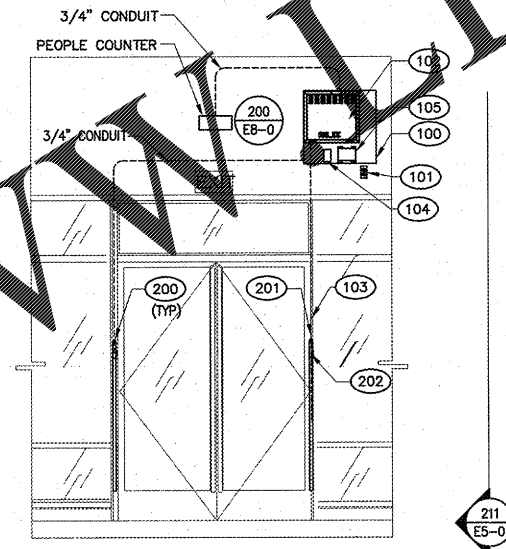
DOOR JAMB DETAIL

NOT TO SCALE
210



(2) 6'-0" DOOR OPENING ELEVATION

NOT TO SCALE
204

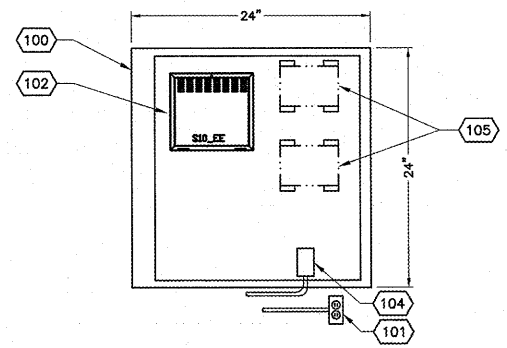


EAS SYSTEM GENERAL NOTES

1. LOCATE "D-BLAZE" FIRE RETARDANT TREATED PLYWOOD BACKBOARD AT 12"-6" A.F.F. BACKBOARD NOT TO EXCEED 15'-0" A.F.F.
2. ACCESS PANEL TO BE WITHIN 2'-0" MAX. OF EAS BACKBOARD. COORDINATE EXACT LOCATION WITH G.C. PRIOR TO ROUGH-IN.
3. BACKBOARD TO HAVE A FLAMESPREAD OR SMOKE RATING OF 25 OR LESS.

EAS SYSTEM CODED NOTES

- (100) 3/4" THICK, GRADE A PLYWOOD EAS BACKBOARD. SIZE AS INDICATED, SEE ARCH DRAWINGS FOR LOCATION.
- (101) DEDICATED ISOLATED GROUND DUPLEX RECEPTACLE.
- (102) S10 ELECTRONICS ENCLOSURE.
- (104) PROVIDE J-BOX FOR CONNECTION TO SECONDARY BACKBOARD (IF REQUIRED.) MOUNT J-BOX ON PLYWOOD BOARD. PROVIDE 3/4" CONDUIT WITH PULLSTRING TO SECONDARY BACKBOARD.
- (105) POWER SUPPLIES.

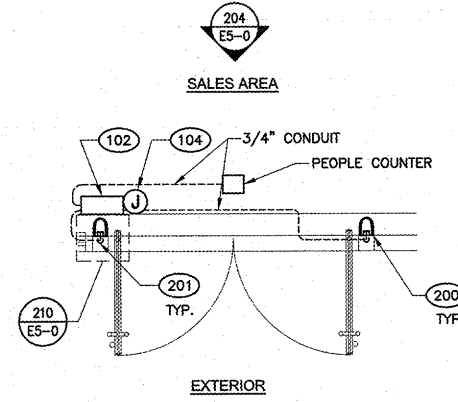


EAS BACKBOARD DETAIL

NOT TO SCALE
100

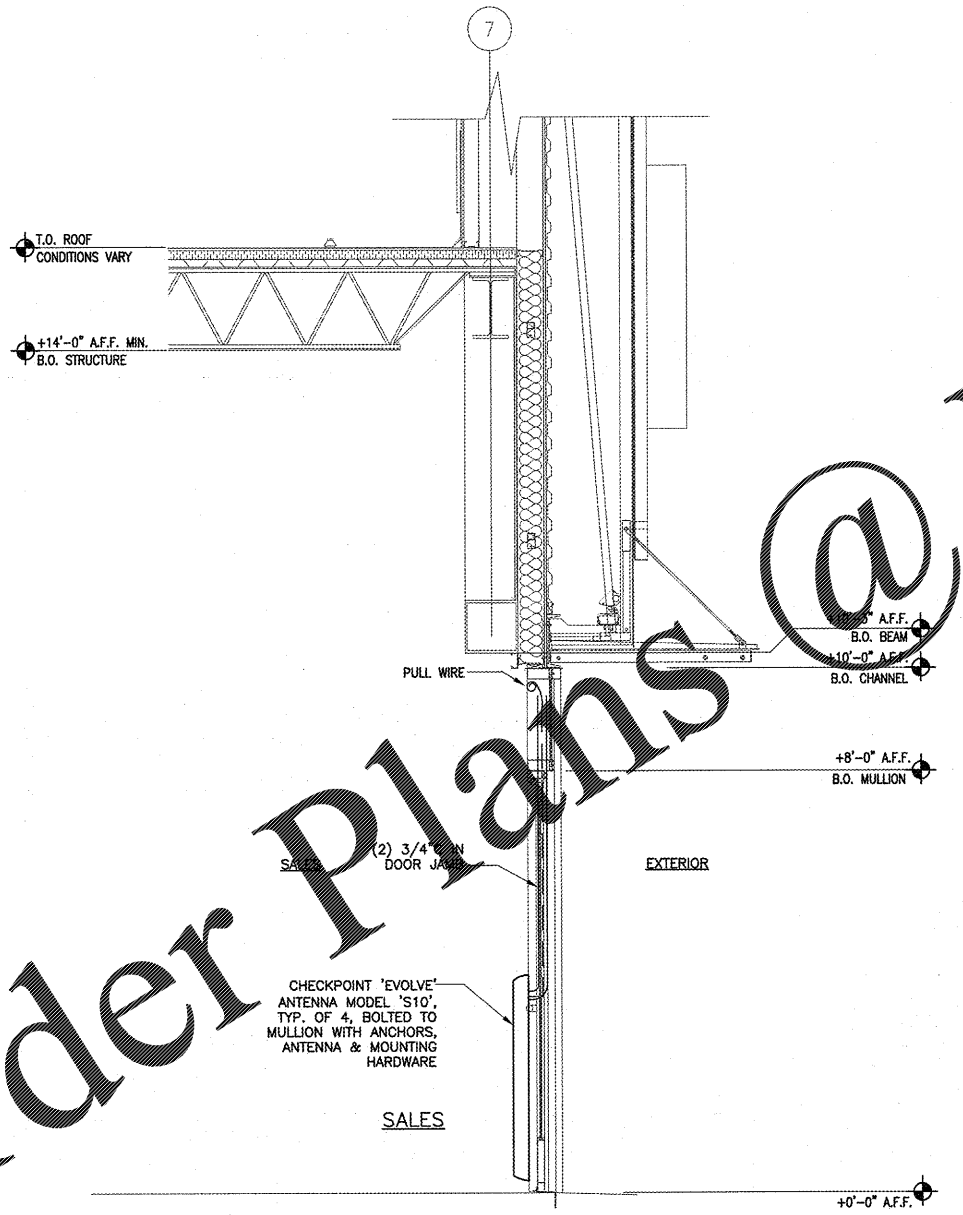
6'-0" DOOR OPENING

NOT TO SCALE
203



6' DOOR OPENING W/O VESTIBULE ENTRY SECTION

NOT TO SCALE
211



Order Plans @ WWW.DILine.com