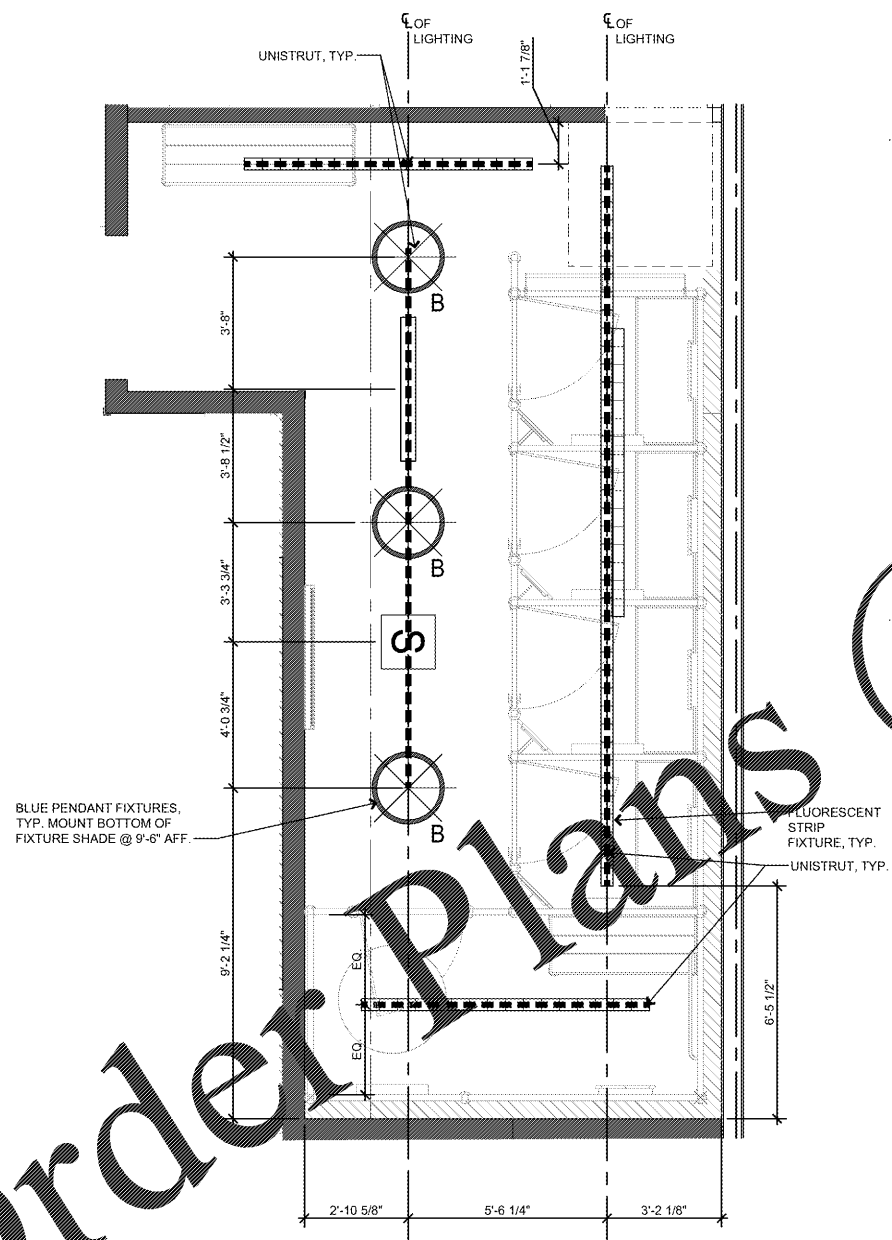
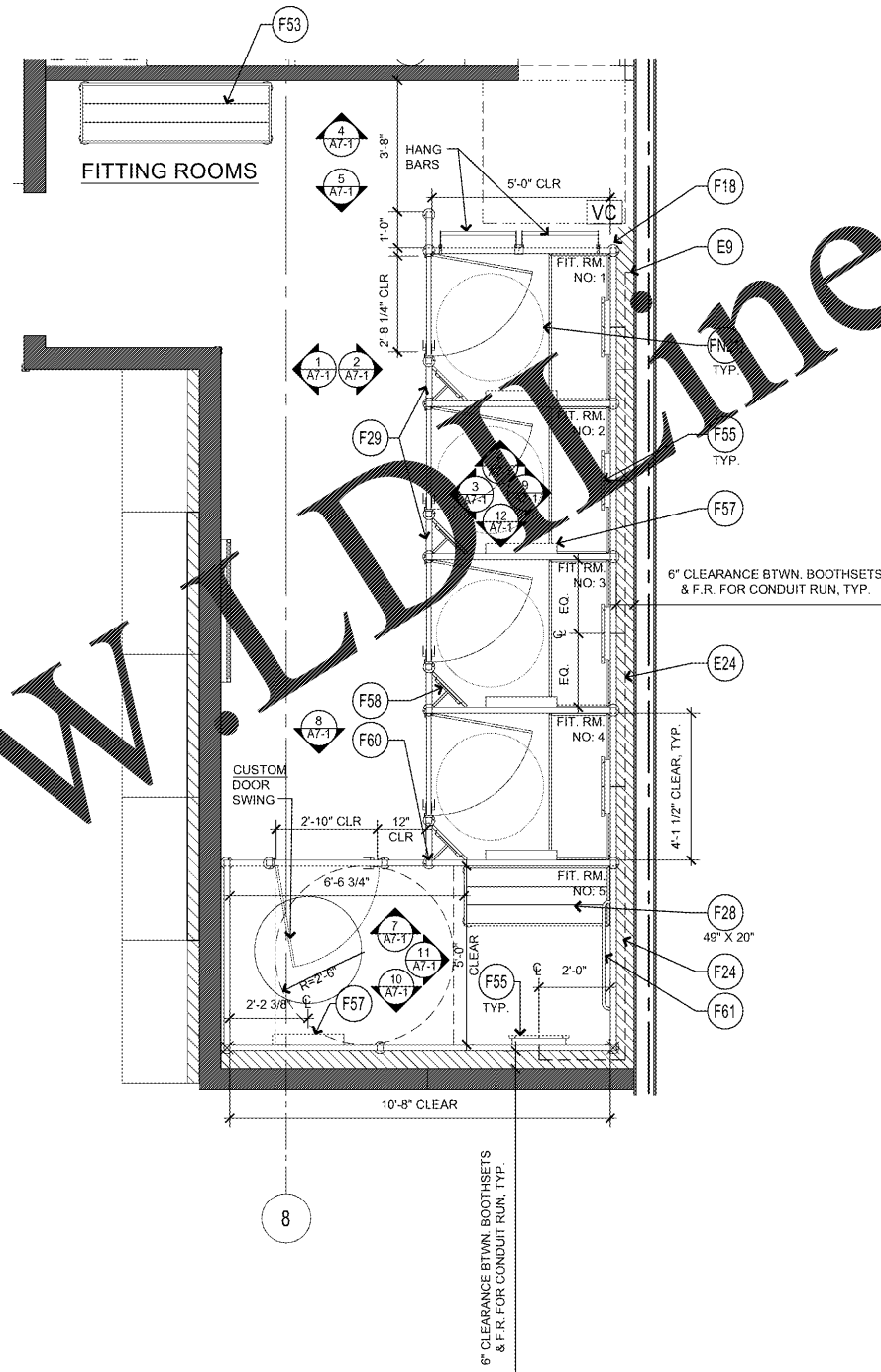


FITTING ROOM ANCHORAGE SCALE: 3" = 1'-0" 12

ELECTRICAL CONDUIT DETAIL @ FITTING ROOMS SCALE: NTS 8



ENLARGED FITTING ROOM REFLECTED CEILING PLAN SCALE: 3/8" = 1'-0" 7



ENLARGED FITTING ROOM AREA FLOOR PLAN

SCALE: 3/8" = 1'-0" 1

KEY	DESCRIPTION	DET/SHT	KEY	DESCRIPTION	DET/SHT	KEY	DESCRIPTION	DET/SHT	GENERAL NOTES
<b>FIXTURES</b>			<b>FINISHES</b>			1. FITTING ROOMS SHOWN FOR REFERENCE ONLY. SEE SHOP DRAWINGS FOR INSTALLATION / ASSEMBLY. 2. ALL FITTING ROOMS MUST BE INSTALLED LEVEL & PLUMB. 3. ELECTRICAL WORK FOR FITTING ROOM'S LIGHTING AND GRAB BAR BLOCKING SHOULD BE COMPLETED PRIOR TO BOOTHSSET FIXTURE INSTALLATION. 4. FURNISH AND INSTALL CLEAR SEALANT AT GAPS AROUND ALL THE FITTING ROOMS - TYP.			
F10	END PANEL FOR 10'-0" H "L" FIXTURE	2 / A8-1	F28	PREFABRICATED FITTING ROOM PARTITION ANCHOR LOCATION	12 / -				
F11	10'-0" H "T" BOOTHSSET FIXTURE	3 / A8-0	F29	PREFABRICATED FITTING ROOM PARTITIONS	-	F61	GC TO PROCURE AND INSTALL GRAB BARS AND BLOCKING	12 / A10-0	
F12	10'-0" H "L" BOOTHSSET FIXTURE	2 / A8-0	F30	FITTING ROOM AREA LOUNGE DESK FIXTURE	5 / A8-0	F20	FITTING ROOM 36" DIAMETER FLOOR MAT	-	
F15	8'-0" H FILLER PANEL	-	F53	FITTING ROOM AREA LOUNGE BENCH	6 / A8-0	<b>ELECTRICAL</b>			
F16	10'-0" H FILLER PANEL	-	F54	END PANEL WITH SHELVES FOR 10'-0" H "T" FIXTURE	-	E9	ROUTE (1) ELEC. CONDUIT FROM ABOVE TO BEHIND FITTING ROOMS WHERE INDICATED. INSTALL / ROUTE CONDUIT AS TIGHT AS POSSIBLE TO BACKSIDE OF F.R. WALL TO POWER LIGHTING IN DESIGNATED OPENINGS	8 / - SEE ELEC.	
F17	7" EXACT WING WALL, RIGHT HAND	-	F55	MIRROR WITH LIGHT FIXTURE EACH SIDE.	9 / A7-1	E24	RUN (1) ELEC. CONDUIT ALONG SIDES & BACK OF ROOMS FOR MIRRORS & KEEP CONDUIT TIGHT TO FITTING ROOMS.	8 / - SEE ELEC.	
F18	7" EXACT WING WALL, LEFT HAND	-	F56	2'-0" H (BP-2B) WHITE BACK PANEL AT TOP OF FITTING ROOM BOOTHSSETS. GC TO CUT PANEL IN FIELD	5 / A8-1	E28	USB PORT	-	
F19	23" EXACT WING WALL, RIGHT HAND	-	F57	24" SHELF W/HANGBAR, TYP.	-				
F20	23" EXACT WING WALL, LEFT HAND	-	F58	CORNER MIRROR, TYP.	-				
F21	10'-0" H "L" MIRROR END PANEL	2 / A8-1							

ENLARGED FITTING ROOM PLAN AND RCP SCALE: 3/8" = 1'-0" 7

FITTING ROOM PLAN KEY NOTES

NEW STORE

OLD NAVY

CAPAC, INC. ARCHITECTURE  
CORPORATE STREET  
SAN FRANCISCO, CA 94105

REPS. I.D.: 0000054156  
STORE NUMBER: 4458  
STORE LOCATION: VINELAND  
8231 VINELAND AVENUE  
SUITE 2151  
ORLANDO, FLORIDA 32821

DESIGN TYPE: P3  
GENERATION: 17012  
PROTOTYPE DATE: 07/18/16  
OPENING: 2017

CONSULTANT INFO:

PROFESSIONAL STAMP:

ARCHITECT INFO:

B|R|R  
architecture

ARCHITECT OF RECORD: BRR ARCHITECTURE, INC.  
6700 ANTIOCH PLAZA, SUITE 200, HENRIEVILLE, KANSAS 67044

ISSUE TYPE:

PERMIT/BID: 04/07/17

REVISIONS:

DRAWN BY: EE  
A/E JOB NUMBER: 65013011

TITLE SHEET:  
ENLARGED FITTING ROOM  
PLAN AND RCP

SHEET NUMBER:

A7-0