

REV.	DESCRIPTION	DATE	APPROVED
C	REMOVE DRAWER/STAND, ADD VERIFONE / SCANNER PROTECTION ANTI-THEFT/REMOVABLE FRONT PANEL	7/18/2017	JAF
D	ADD VERIFONE, SCANNER & ADD COVER/REMOVABLE FRONT	7/18/2017	JAF
E	ADD VERIFONE, SCANNER, & MOVE CASHWRAP	7/18/2017	JAF
F	CHANGE DRAWER FINISH	8/18/2017	JAF
G	CHANGE CASHWRAP LOCATION	11/17/2017	JAF
H	CHANGE CASHWRAP LOCATION	11/17/2017	JAF
I	CHANGE CASHWRAP LOCATION	11/17/2017	JAF
J	MAKE CASHWRAP TALLER, 30" HIGHER OVER "G" TALLER	11/22/2017	JAF
K	ADJUST HEIGHT & DEPTH	11/22/2017	JAF
L	CHANGE POLICY AREA SIZE TO 9 3/4" SQ	12/29/2016	JAF
M	REMOVE PIN TAG (CASHWRAP) AND ADD PIN TAG (CASHWRAP)	1/19/2017	JAF
N	REMOVE PIN TAG (CASHWRAP) AND ADD PIN TAG (CASHWRAP)	1/19/2017	JAF
O	REMOVE PIN TAG (CASHWRAP) AND ADD PIN TAG (CASHWRAP)	2/14/2017	JAF
P	ADDED GROMMET HOLE	9/22/2017	JAF

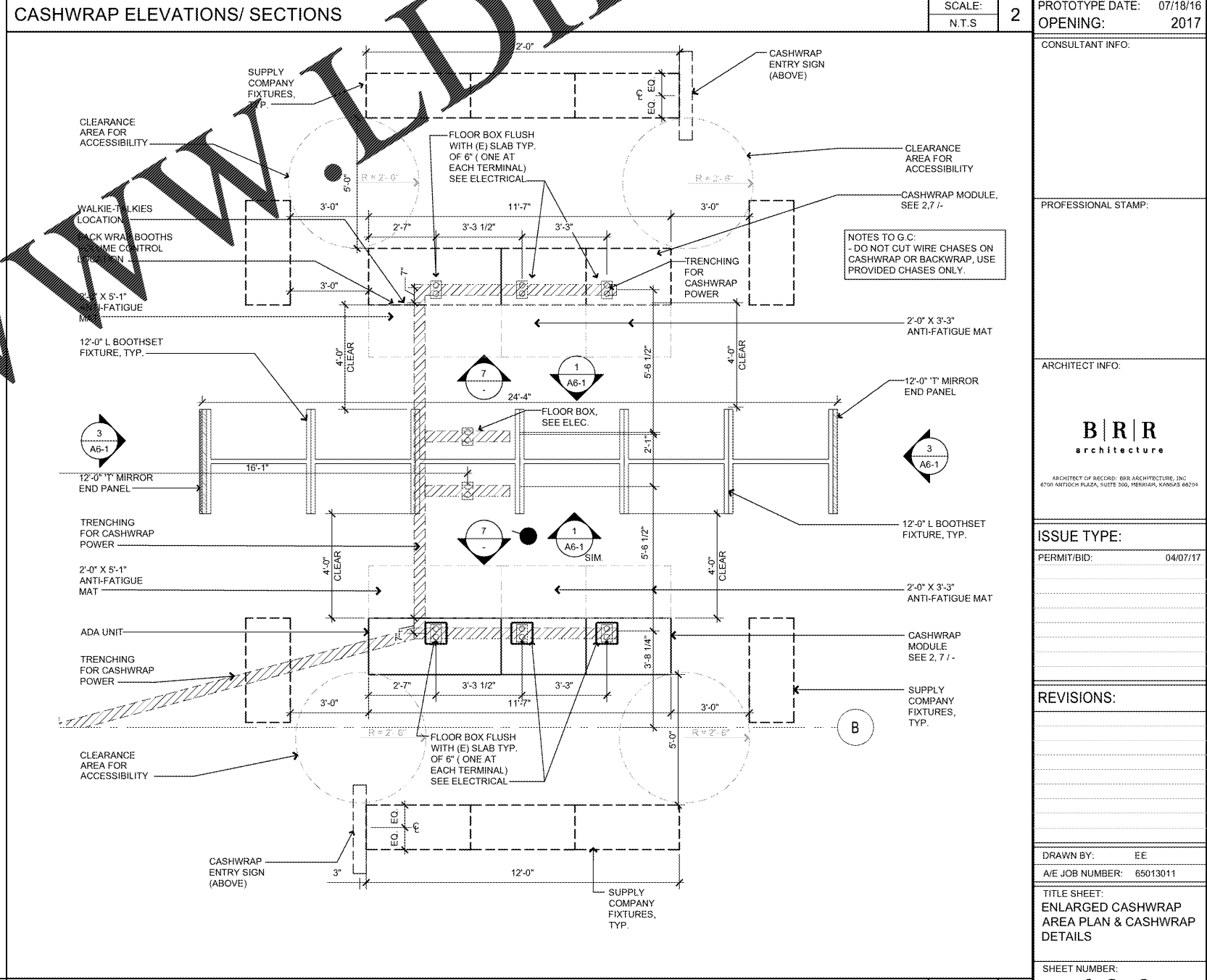
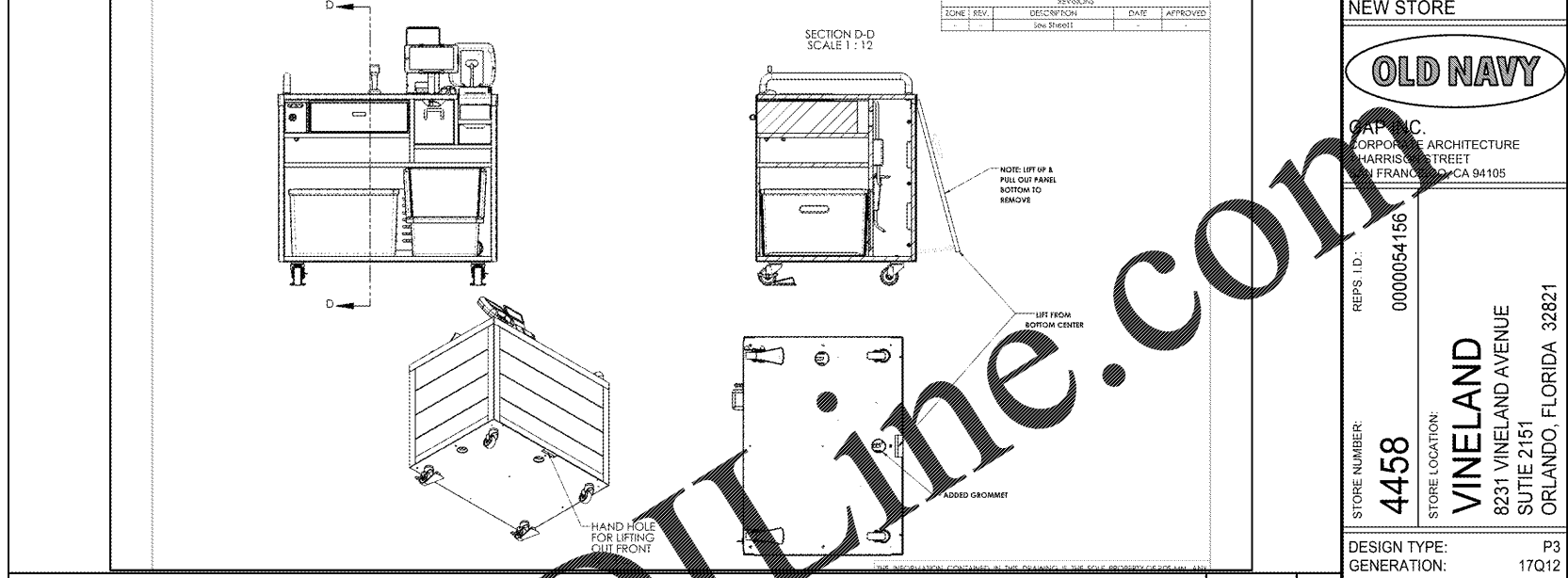
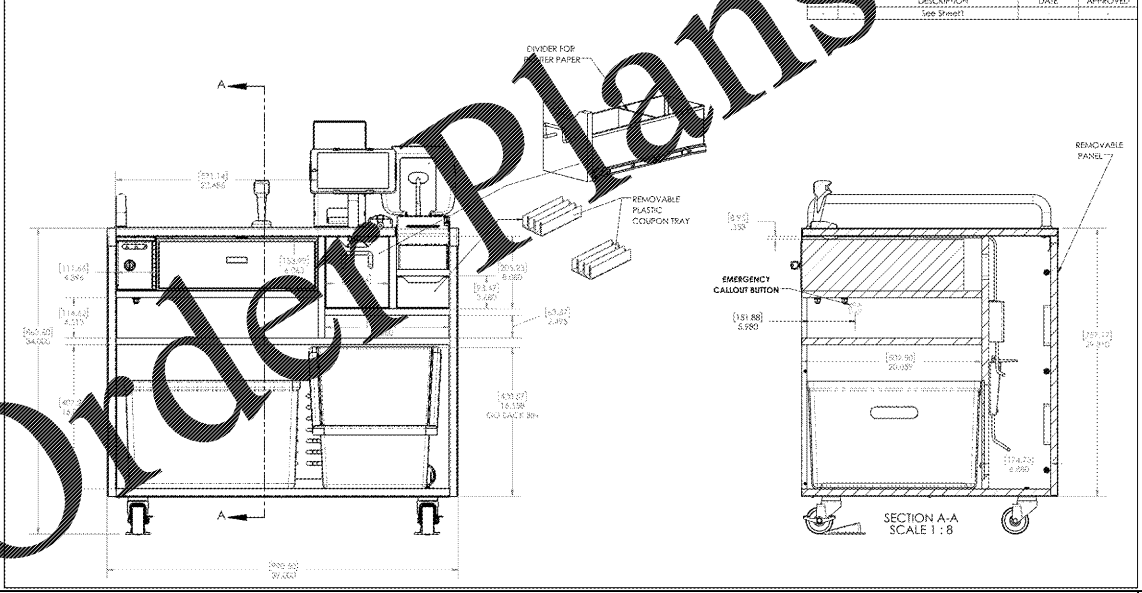
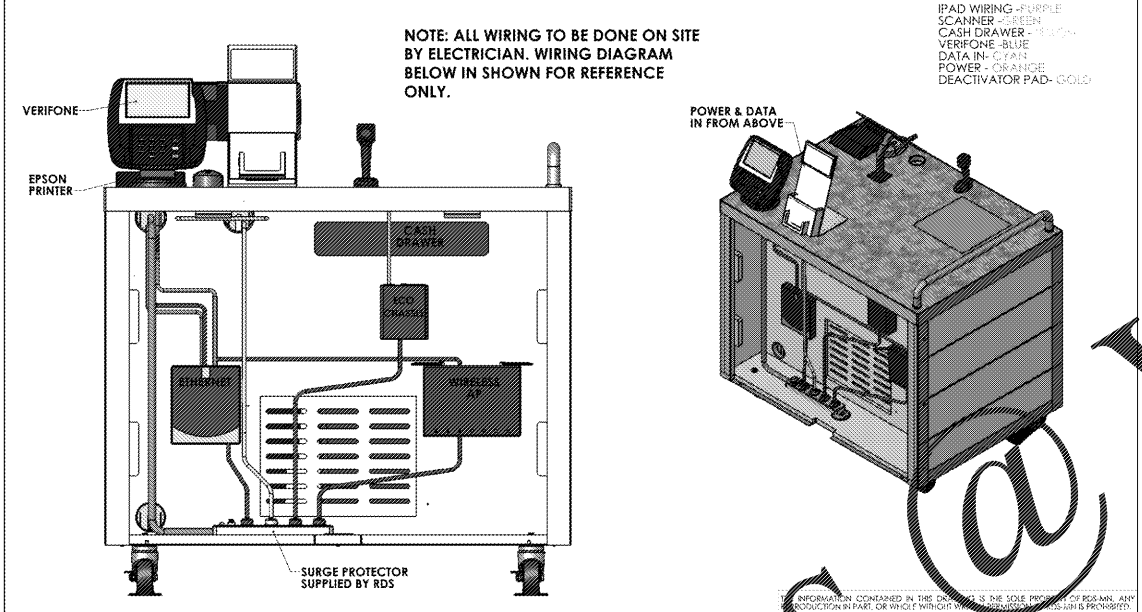
ALL WOOD FIXTURES SHALL BE QUALITY CONSTRUCTED WITH THESE MINIMUM FEATURES:

1. JOINTS MUST BE GLUED, NAILED, SPANLED, OR BOLTED.
2. QUALITY TOPGRADE YELLOW GRADE ADHESIVE. EXCEPT WHERE FULLY PURCHASE ADHESIVE.
3. MECHANICAL FASTENERS SUCH AS SCREWS, NAILS OR BRADNAILS MUST BE DRIVEN INTO THE WOOD GRAIN OF THE WOOD.
4. ALL JOINTS SHOULD BE RIGHT ANGLE, SQUARE AND PROPERLY FLUSH.
5. SAND AND LINE ALL EDGES TO RADIUS 1/8" MINIMUM.
6. ALL MODIFICATIONS OR SUBSTITUTIONS MUST BE APPROVED BY THE ARCHITECT.
7. ALL MODIFICATIONS OR SUBSTITUTIONS MUST BE APPROVED BY THE ARCHITECT.

ALL METAL FIXTURES SHALL BE QUALITY CONSTRUCTED WITH THESE MINIMUM FEATURES:

1. JOINTS MUST BE WELDED OR BOLTED.
2. QUALITY BRONZE ANGLE.
3. MECHANICAL FASTENERS SUCH AS SCREWS, NAILS OR BRADNAILS MUST BE DRIVEN INTO THE METAL GRAIN OF THE METAL.
4. ALL JOINTS SHOULD BE RIGHT ANGLE, SQUARE AND PROPERLY FLUSH.
5. SAND AND LINE ALL EDGES TO RADIUS 1/8" MINIMUM.
6. ALL MODIFICATIONS OR SUBSTITUTIONS MUST BE APPROVED BY THE ARCHITECT.
7. ALL MODIFICATIONS OR SUBSTITUTIONS MUST BE APPROVED BY THE ARCHITECT.

31662.01.040



NEW STORE

OLD NAVY

CAPAC, INC. CORPORATE ARCHITECTURE
HARRISON STREET
SAN FRANCISCO, CA 94105

REPS. I.D.: 0000054156

STORE NUMBER: 4458

STORE LOCATION: VINELAND
8231 VINELAND AVENUE
SUITE 2151
ORLANDO, FLORIDA 32821

DESIGN TYPE: P3
GENERATION: 17012
PROTOTYPE DATE: 07/18/16
OPENING: 2017

CONSULTANT INFO:

PROFESSIONAL STAMP:

ARCHITECT INFO:

B | R | R
architecture

ARCHITECT OF RECORD: BRR ARCHITECTURE, INC.
6750 ANTHONY PLAZA, SUITE 300, PEBBLE BEACH, KANSAS 66204

ISSUE TYPE:

PERMIT/BID: 04/07/17

REVISIONS:

DRAWN BY: EE
A/E JOB NUMBER: 65013011

TITLE SHEET:
ENLARGED CASHWRAP
AREA PLAN & CASHWRAP
DETAILS

SHEET NUMBER: