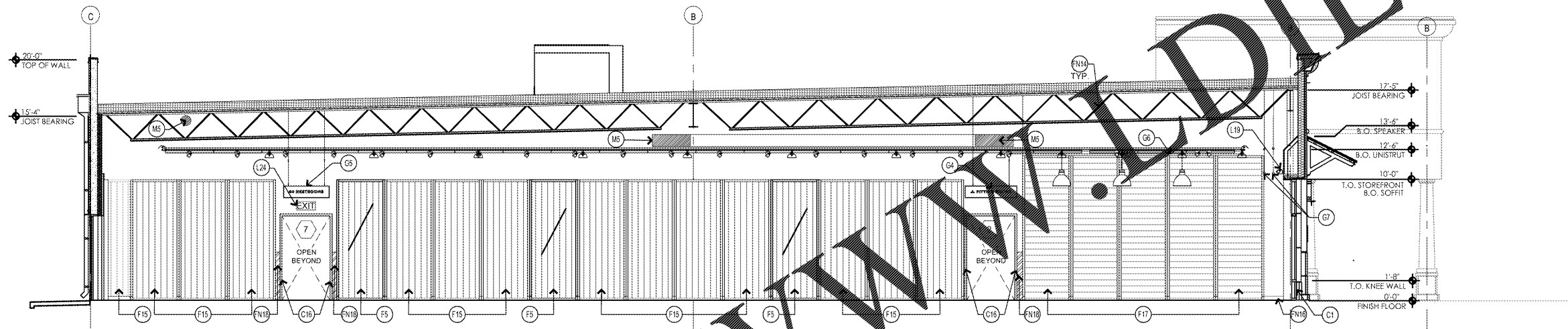


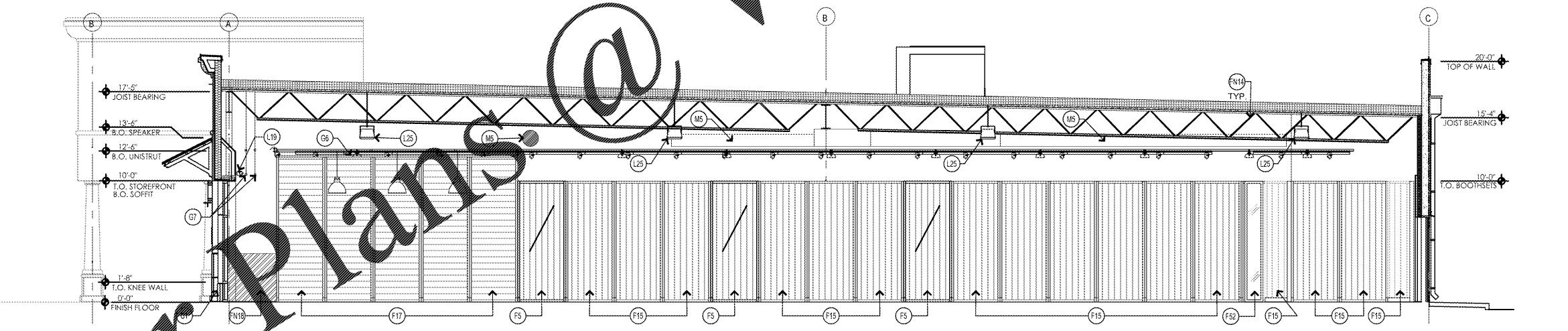
INTERIOR ELEVATION (CENTER)

SCALE: 3/16" = 1'-0" 3



INTERIOR ELEVATION (LEFT WALL)

SCALE: 3/16" = 1'-0" 2



INTERIOR ELEVATION (RIGHT WALL)

SCALE: 3/16" = 1'-0" 1

KEY	DESCRIPTION	DET/SHT	KEY	DESCRIPTION	DET/SHT	KEY	DESCRIPTION	DET/SHT	KEY	DESCRIPTION	DET/SHT	KEY	DESCRIPTION	DET/SHT
SHELL / CONSTRUCTION			FIXTURES			FINISHES			LIGHTING			MEP / LOSS PREVENTION		
(C1)	ALUMINUM STOREFRONT SYSTEM		(F1)	MOBILE CASHWRAP MODULE	A6-0	(F16)	10'-0" H 1" L BOOTHSET FIXTURE	2 / A8-0	(G4)	FITTING ROOM SIGN - VENDOR TO MOUNT B.O. SIGN AT 8'-6" A.F.F. G.C. TO PROVIDE UNISTRUT	8 / A11-1	(L19)	ILLUMINATED EXIT SIGN	SEE ELEC
(C14)	ALUMINUM STOREFRONT SYSTEM		(F2)	FAST LANE FIXTURE	5 / A6-1	(F17)	12'-0" H 1" L BOOTHSET FIXTURE	2 / A8-0	(G6)	TOILET ROOM SIGN - VENDOR TO MOUNT B.O. SIGN AT 8'-6" A.F.F. MIN. G.C. TO PROVIDE UNISTRUT AND POWER	12 / A11-1	(L25)	UNISTRUT GRID MOUNTED AT 12'-6" A.F.F. TO BOTTOM OF UNISTRUT TRACK WITH HEADS MOUNTED 9'-0" O.C. MOUNT TO WALL AT 6" ABOVE STOREFRONT	SEE ELEC
(C15)	ALUMINUM STOREFRONT SYSTEM		(F3)	BACKWRAP BOOTHSET, OPEN BASE	1 / A6-1	(F20)	MIRROR END PANEL	2 / A8-1	(G7)	WOOD SLAT GRID TO BE CONSTRUCTED TO FIT WITHIN UNISTRUT GRID. HANG INDEPENDENTLY W/CABLE ATTACHED DIRECTLY TO DECK ABOVE ALIGN METAL FRAME W/UNISTRUT GRID.	5, 6, 9 / A4-1	(L26)	CONTINUOUS TRACK WITH HEADS MOUNTED 9'-0" O.C. MOUNT TO WALL AT 6" ABOVE STOREFRONT	SEE ELEC
(C16)	METAL 3'-6" CASHTOP OPENING PAINTED [P5]	CO-2	(F4)	12'-0" H BACKWRAP BOOTHSET FIXTURE, WITH OPEN BASE	1 & 2 / A6-1	(F21)	11'-6" H 1" L BOOTHSET FIXTURE	2 / A8-0	(G8)	ROSE SYSTEM TRACK - MOUNT 8" ABOVE GLAZING, AT 18" AND 27" FROM WINDOW	10 / A4-1	(L27)	PEOPLE COUNTERS MOUNT AT 12'-4" A.F.F.	SEE ELEC
			(F5)	10'-0" H 1" L BOOTHSET FIXTURE	3 / A8-0	(F22)	STAGE FIXTURE FOR REFERENCE ONLY	-	(G9)	2'-X-3' SIGNAGE SIGN WITH 5'-0" G.C. MOUNT STOREFRONT	5 / A11-1	(L28)	ILLUMINATED EXIT SIGN	SEE ELEC
			(F6)	END PANELS FOR 10'-0" H 1" L FIXTURE	2 / A8-1	(F23)	SHOP DIVIDER FIXTURE	4 / A8-0	(G10)	HANDICAP FITTING ROOM SIGN @ 5'-8" A.F.F.	5 / A11-1	(L29)	MUSIC SPEAKER. VENDOR TO MOUNT B.O. SPEAKER AT 12'-6" A.F.F. G.C. TO PROVIDE & INSTALL UNISTRUT	SEE ELEC & SEE ELEC
			(F7)	12'-0" H 1" L BOOTHSET FIXTURE	2 / A8-0	(F48)	CUSTOM 1'-8" MIRROR ON FILLER PANEL	-	(G11)	CASHWRAP ENTRY SIGN - VENDOR TO MOUNT B.O. SIGN AT 8'-6" A.F.F. G.C. TO PROVIDE UNISTRUT AND POWER	7 / A11-1	(L30)	POWER POLE TO PROVIDE POWER FOR ALL FIXTURES & CASHWRAP VS. A DISPLAY SPEAKERS & FIXTURES	SEE ELEC
			(F8)	12'-0" H 1" L BOOTHSET FIXTURE	2 / A8-0				(G12)	HANDICAP FITTING ROOM SIGN @ 5'-8" A.F.F.	5 / A11-1			

KEY NOTES

NEW STORE

OLD NAVY

CAPAC. CORPORATION ARCHITECTURE
HARRISON STREET
SAN FRANCISCO, CA 94105

REPS. I.D.: 0000054156

STORE NUMBER: 4458

STORE LOCATION: VINELAND
8231 VINELAND AVENUE
SUITE 2151
ORLANDO, FLORIDA 32821

DESIGN TYPE: P3
GENERATION: 17Q12
PROTOTYPE DATE: 07/18/16
OPENING: 2017

CONSULTANT INFO:

PROFESSIONAL STAMP:

ARCHITECT INFO:

B | R | R
architecture

ARCHITECT OF RECORD: BRR ARCHITECTURE, INC.
6750 ANTHONY PLAZA, SUITE 300, PERRIS, KANSAS 66744

ISSUE TYPE:

PERMIT/BID: 04/07/17

REVISIONS:

DRAWN BY: EE
A/E JOB NUMBER: 65013011

TITLE SHEET:
INTERIOR ELEVATIONS

SHEET NUMBER:
A3-1