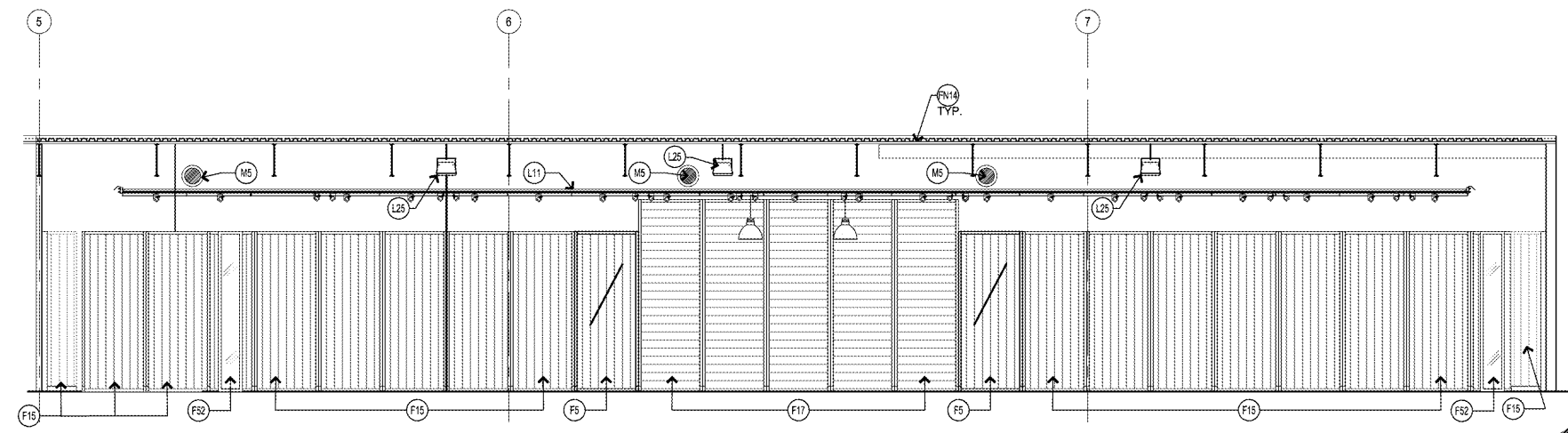


INTERIOR ELEVATION (BACK WALL)

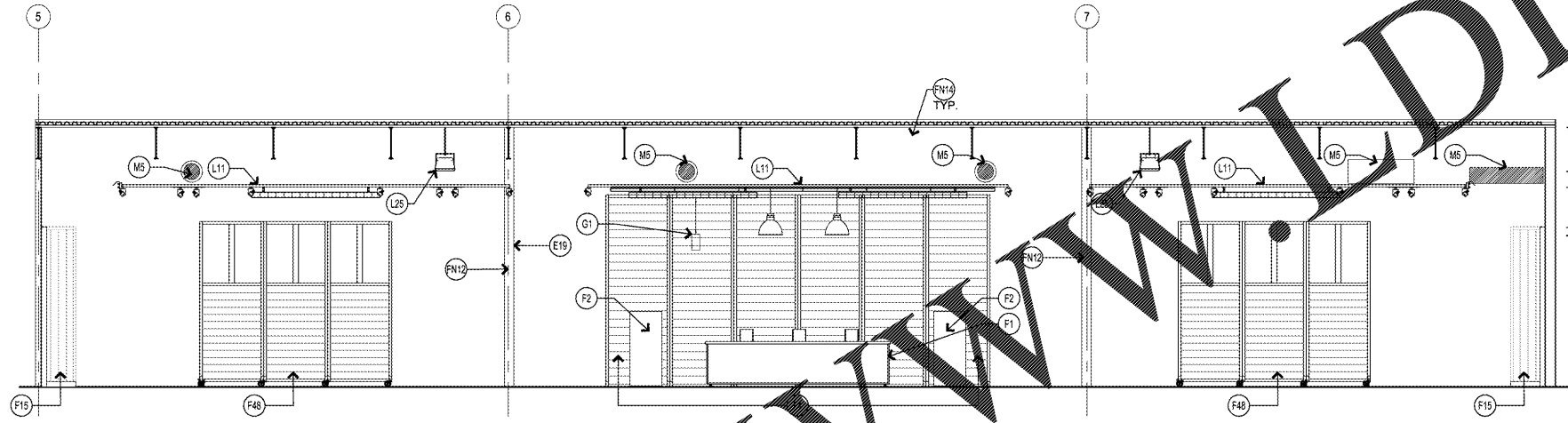
SCALE: 3/16" = 1'-0"  
 3



- 15'-4" B.O. (E) DECK
- 13'-6" A.F.F. B.O. SPEAKERS
- 12'-6" A.F.F. B.O. UNISTRUT
- 10'-0" A.F.F. T.O. BOOTHSETS
- 9'-6" A.F.F. B.O. PENDANTS
- 0'-0" A.F.F. FINISH FLOOR

INTERIOR ELEVATION (CASHWRAP)

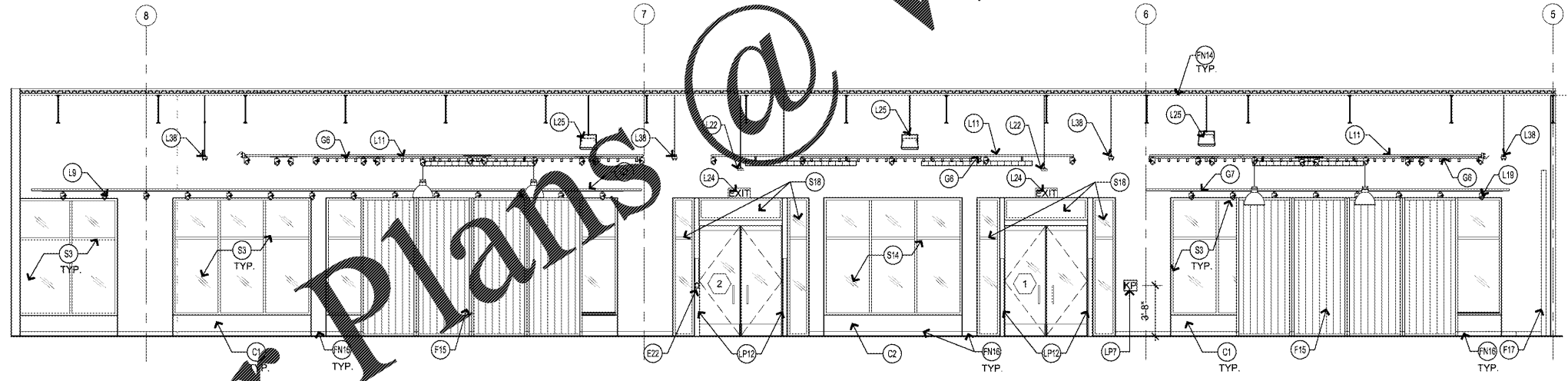
SCALE: 3/16" = 1'-0"  
 2



- 16'-3" V.I.F. B.O. (E) DECK
- 13'-6" A.F.F. B.O. SPEAKERS
- 12'-6" A.F.F. B.O. UNISTRUT
- 10'-0" A.F.F. T.O. DISPLAY BOOTHSETS
- 9'-6" A.F.F. B.O. PENDANTS
- 0'-0" A.F.F. FINISH FLOOR

INTERIOR ELEVATION (FRONT WALL)

SCALE: 3/16" = 1'-0"  
 1



- 17'-5" B.O. (E) STRUCTURE
- 13'-6" A.F.F. B.O. SPEAKERS
- 12'-6" A.F.F. TO B.O. UNISTRUT
- 12'-0" A.F.F. T.O. BOOTHSETS
- 10'-0" A.F.F. T.O. DISPLAY BOOTHSETS
- 9'-6" A.F.F. B.O. PENDANT LIGHTS
- 1'-6" A.F.F. T.O. KNEE WALL
- 0'-0" A.F.F. FINISH FLOOR

KEY	DESCRIPTION	DET/SHT	KEY	DESCRIPTION	DET/SHT	KEY	DESCRIPTION	DET/SHT	KEY	DESCRIPTION	DET/SHT	KEY	DESCRIPTION	DET/SHT	KEY	DESCRIPTION	DET/SHT
SHELL / CONSTRUCTION			FIXTURES			FINISHES			LIGHTING			MEP / LOSS PREVENTION					
(S3)	(E) ALUMINUM STOREFRONT SYSTEM		(F1)	MOBILE CASHWRAP MODULE	A6-0	(F15)	10'-0" H "L" BOOTHSET FIXTURE	2 / A6-0	(L24)	(N) ILLUMINATED EXIT SIGN	5 / A1-1	(M4)	TRANSFER GRILLES, PAINT TO MATCH WALL	SEE MECH			
(S14)	(N) ALUMINUM STOREFRONT SYSTEM MATCH EXISTING		(F2)	FAST LANE FIXTURE	5 / A6-1	(F17)	12'-0" H "L" BOOTHSET FIXTURE	2 / A6-0	(L25)	UNISTRUT GRID MOUNTED AT 12'-8" A.F.F. TO BOTTOM SUPPORTS AT 8'-0" MAX. O.C.	SEE ELEC & A1-1a & b	(M5)	MECHANICAL DUCT WORK	SEE MECH			
(S18)	(N) TRANSOM AND SIDELIGHT TO MATCH EXISTING		(F4)	BACKWRAP BOOTHSET, OPEN BASE	1 / A6-1	(F20)	MIRROR END PANEL	1 / A6-1	(L19)	CONTINUOUS TRACK WITH HEADS MOUNTED 3'-0" O.C. MOUNT TO WALL AT 6" ABOVE STOREFRONT	SEE ELEC	(LP7)	KEYPAD MOUNTED @ 44" MIN. / 48" MAX. A.F.F.	SEE ELEC			
(C1)	(E) KNEE WALL TO REMAIN		(F5)	12'-0" H BACKWRAP BOOTHSET FIXTURE, WITH OPEN BASE	1 & 2 / A6-1	(F21)	10'-0" H TYP. BOOTHSET FIXTURE	2 / A6-0	(L22)	PEOPLE COUNTER, MOUNT AT 12'-0" A.F.F.	SEE ELEC	(E22)	ADA PUSH BUTTON DOOR OPERATOR BY LANDLORD, MOUNTED TO BOLLARD WITH T.O. BUTTON AT 48" MAX.				
(C2)	(N) KNEE WALL TO MATCH ADJACENT		(F11)	10'-0" H TYP. BOOTHSET FIXTURE	2 / A6-0	(F22)	10'-0" H TYP. BOOTHSET FIXTURE	2 / A6-0	(L26)	MUSIC SPEAKER. VENDOR TO MOUNT B.O. SPEAKER AT 13'-6" A.F.F. GC TO PROVIDE & INSTALL UNISTRUT	SEE ELEC & 8 / A4-1	(EP12)	EAS FIN LOCATION	SEE ELEC			
(C6)	(M) METAL PANEL BASE OPENING PAINTED TO MATCH	C0-2	(F14)	END PANELS FOR 10'-0" H TYP. FIXTURE	2 / A6-1	(F23)	STAGE FIXTURE FOR REFERENCE ONLY		(L28)	4'-0" LONG EMERGENCY FLUORESCENT STRIP FIXTURE MOUNT TO UNISTRUT AT 13'-6" A.F.F.	SEE ELEC	(EP19)	POWER POLE TO PROVIDE POWER FOR ALL FIXTURES AT CASHWRAP, VISUAL DISPLAY AREAS, & PROJECTOR.	SEE ELEC			
			(F16)	10'-0" H TYP. BOOTHSET FIXTURE	2 / A6-0	(F24)	SHOP DIVIDER FIXTURE	4 / A8-0	(G1)	CASHWRAP ENTRY SIGN - VENDOR TO MOUNT B.O. SIGN AT 8'-6" A.F.F. GC TO PROVIDE UNISTRUT AND POWER	7 / A11-1						
			(F18)	12'-0" H TYP. BOOTHSET FIXTURE	2 / A6-0	(F25)	CUSTOM 1'-8" MIRROR ON FILLER PANEL		(G2)	GRAPHICS / SIGNAGE							
			(F19)	12'-0" H TYP. BOOTHSET FIXTURE	2 / A6-0	(F26)	10'-0" H TYP. BOOTHSET FIXTURE	2 / A6-0	(G3)	10'-0" H TYP. BOOTHSET FIXTURE							
			(F20)	10'-0" H TYP. BOOTHSET FIXTURE	2 / A6-0	(F27)	10'-0" H TYP. BOOTHSET FIXTURE	2 / A6-0	(G4)	10'-0" H TYP. BOOTHSET FIXTURE							
			(F21)	10'-0" H TYP. BOOTHSET FIXTURE	2 / A6-0	(F28)	10'-0" H TYP. BOOTHSET FIXTURE	2 / A6-0	(G5)	10'-0" H TYP. BOOTHSET FIXTURE							
			(F22)	10'-0" H TYP. BOOTHSET FIXTURE	2 / A6-0	(F29)	10'-0" H TYP. BOOTHSET FIXTURE	2 / A6-0	(G6)	10'-0" H TYP. BOOTHSET FIXTURE							
			(F23)	10'-0" H TYP. BOOTHSET FIXTURE	2 / A6-0	(F30)	10'-0" H TYP. BOOTHSET FIXTURE	2 / A6-0	(G7)	10'-0" H TYP. BOOTHSET FIXTURE							
			(F24)	10'-0" H TYP. BOOTHSET FIXTURE	2 / A6-0	(F31)	10'-0" H TYP. BOOTHSET FIXTURE	2 / A6-0	(G8)	10'-0" H TYP. BOOTHSET FIXTURE							
			(F25)	10'-0" H TYP. BOOTHSET FIXTURE	2 / A6-0	(F32)	10'-0" H TYP. BOOTHSET FIXTURE	2 / A6-0	(G9)	10'-0" H TYP. BOOTHSET FIXTURE							
			(F26)	10'-0" H TYP. BOOTHSET FIXTURE	2 / A6-0	(F33)	10'-0" H TYP. BOOTHSET FIXTURE	2 / A6-0	(G10)	10'-0" H TYP. BOOTHSET FIXTURE							
			(F27)	10'-0" H TYP. BOOTHSET FIXTURE	2 / A6-0	(F34)	10'-0" H TYP. BOOTHSET FIXTURE	2 / A6-0	(G11)	10'-0" H TYP. BOOTHSET FIXTURE							
			(F28)	10'-0" H TYP. BOOTHSET FIXTURE	2 / A6-0	(F35)	10'-0" H TYP. BOOTHSET FIXTURE	2 / A6-0	(G12)	10'-0" H TYP. BOOTHSET FIXTURE							
			(F29)	10'-0" H TYP. BOOTHSET FIXTURE	2 / A6-0	(F36)	10'-0" H TYP. BOOTHSET FIXTURE	2 / A6-0	(G13)	10'-0" H TYP. BOOTHSET FIXTURE							
			(F30)	10'-0" H TYP. BOOTHSET FIXTURE	2 / A6-0	(F37)	10'-0" H TYP. BOOTHSET FIXTURE	2 / A6-0	(G14)	10'-0" H TYP. BOOTHSET FIXTURE							
			(F31)	10'-0" H TYP. BOOTHSET FIXTURE	2 / A6-0	(F38)	10'-0" H TYP. BOOTHSET FIXTURE	2 / A6-0	(G15)	10'-0" H TYP. BOOTHSET FIXTURE							
			(F32)	10'-0" H TYP. BOOTHSET FIXTURE	2 / A6-0	(F39)	10'-0" H TYP. BOOTHSET FIXTURE	2 / A6-0	(G16)	10'-0" H TYP. BOOTHSET FIXTURE							

KEY NOTES

SHEET NUMBER: A3-0

DRAWN BY: EE  
 A/E JOB NUMBER: 65013011  
 TITLE SHEET: INTERIOR ELEVATIONS

ISSUE TYPE:  
 PERMIT/BID: 04/07/17

ARCHITECT INFO:  
**B | R | R**  
 architecture  
 ARCHITECT OF RECORD: BRR ARCHITECTURE, INC.  
 6700 ANTIOCH PLAZA, SUITE 300, MENLO PARK, CA 94025

PROFESSIONAL STAMP:

CONSULTANT INFO:

DESIGN TYPE: P3  
 GENERATION: 17Q12  
 PROTOTYPE DATE: 07/18/16  
 OPENING: 2017