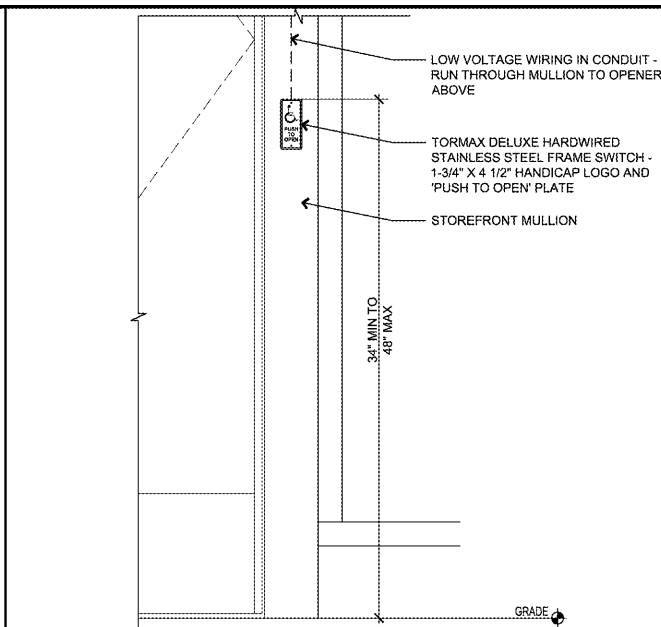
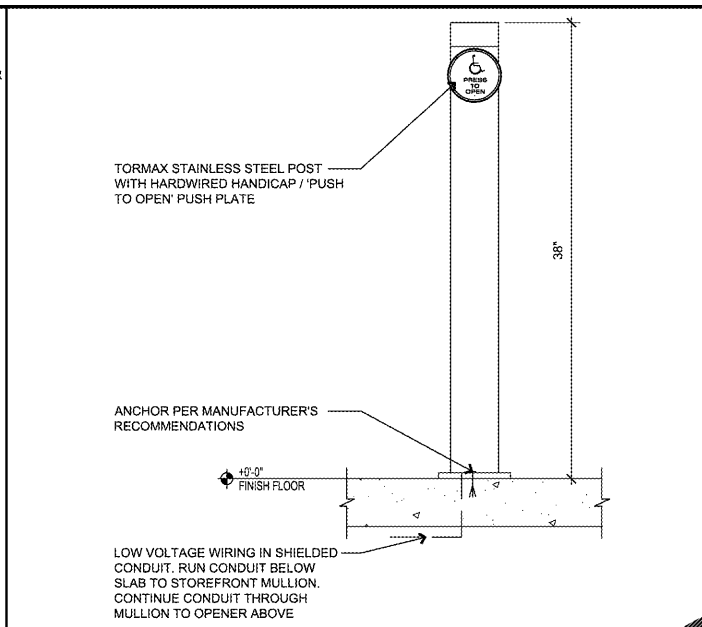


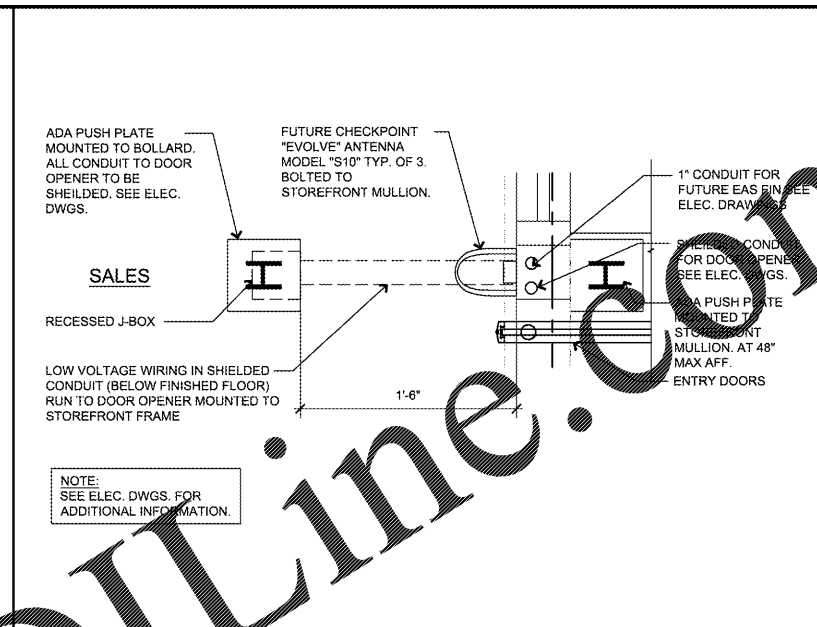
NOT USED SCALE: 12



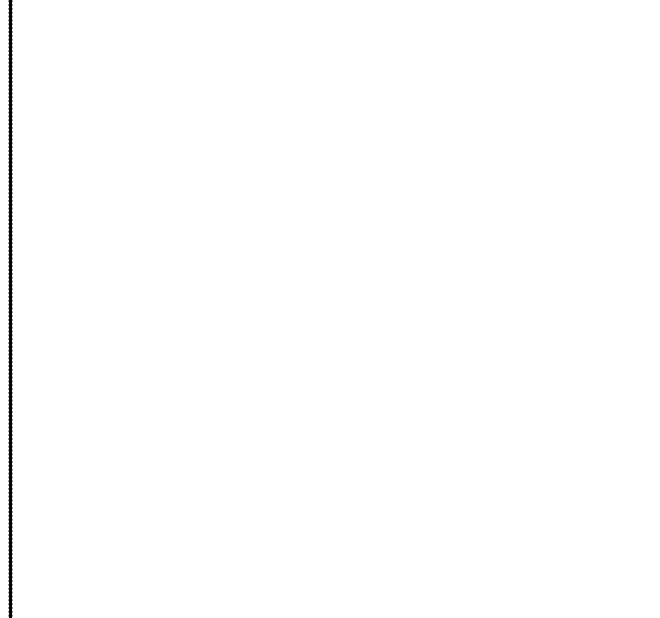
FRAME MOUNTED ADA PUSH BUTTON SCALE: 9



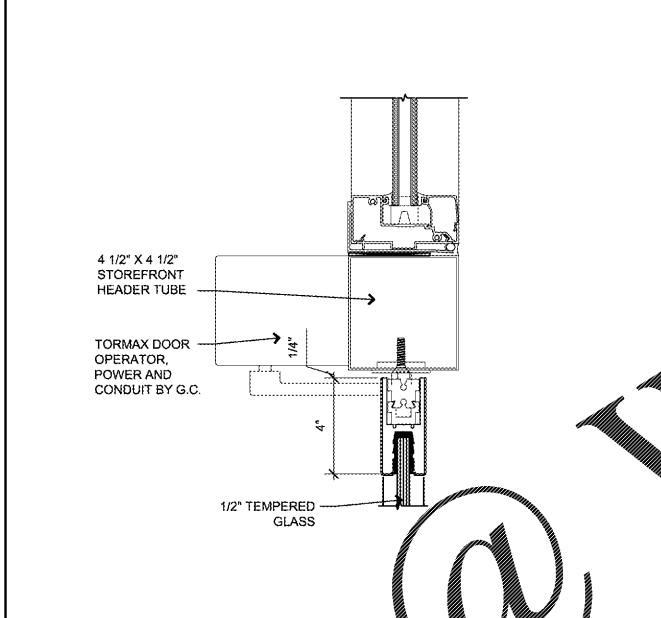
BOLLARD MOUNTED ADA BUTTON SCALE: 6



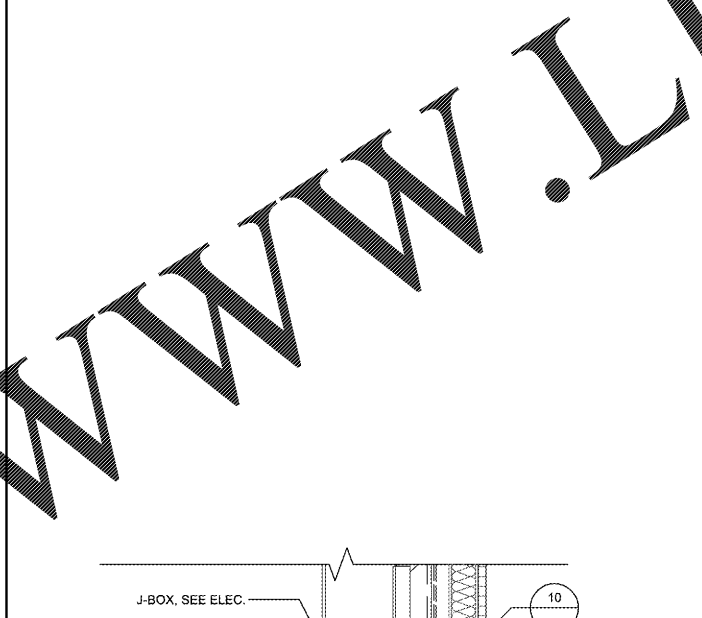
JAMB AT ENTRY AREA SCALE: 3



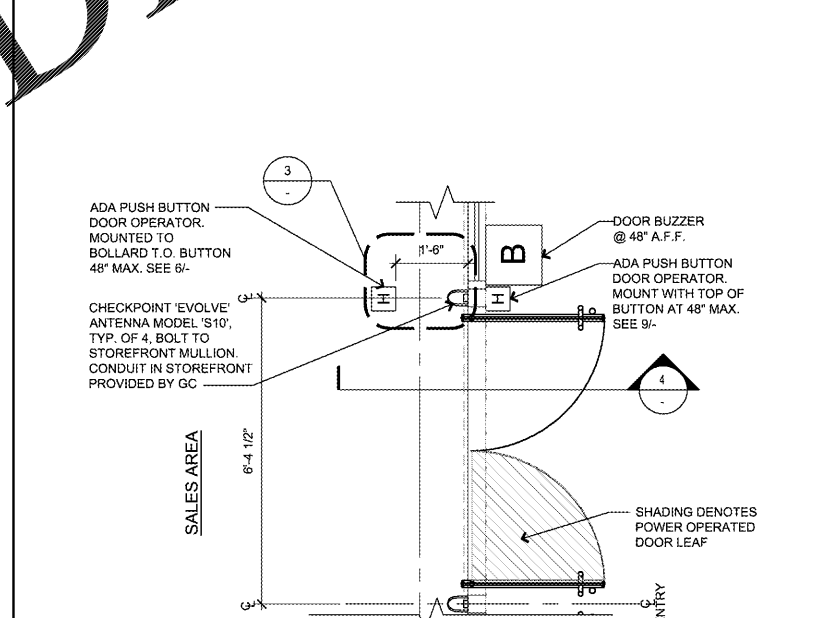
NOT USED SCALE: 11



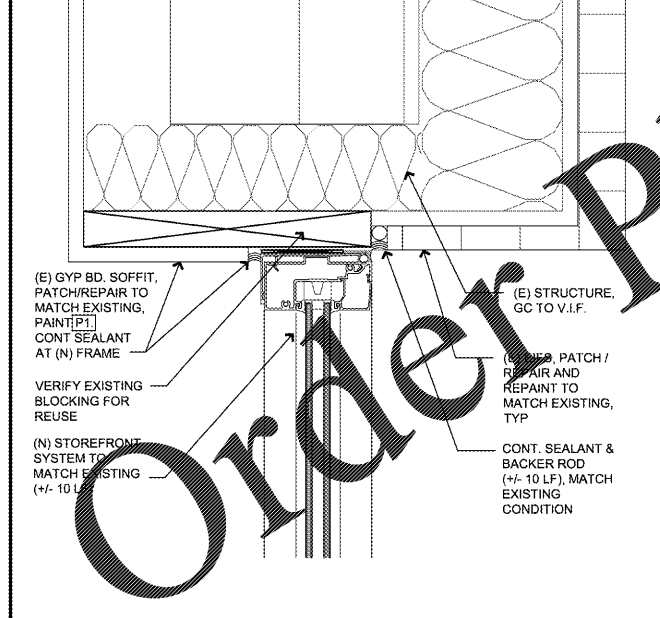
DOOR BOTTOM RAIL DETAIL SCALE: 7



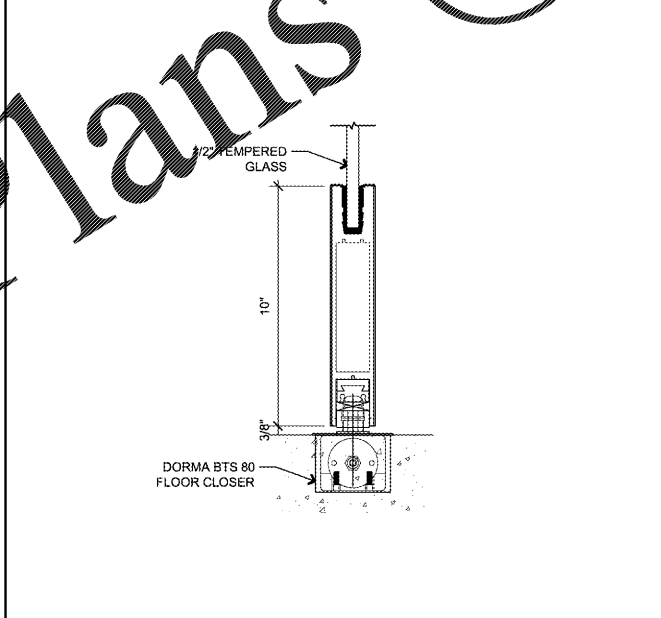
ENTRY AREA SECTION DETAIL SCALE: 4



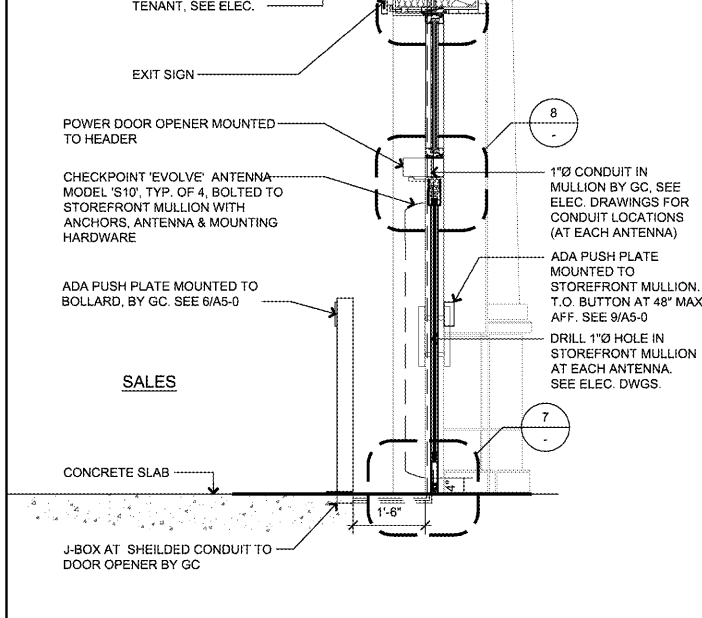
ENTRY AREA ENLARGED PLAN & NOTES SCALE: 1



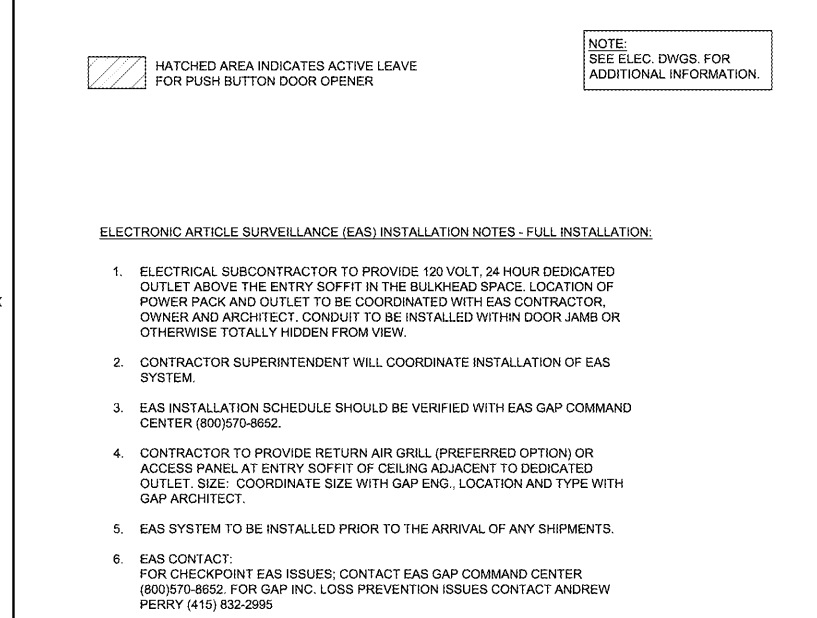
STOREFRONT HEADER DETAIL SCALE: 10



DOOR TOP RAIL DETAIL SCALE: 8



ENTRY AREA SECTION DETAIL SCALE: 4



ENTRY AREA ENLARGED PLAN & NOTES SCALE: 1

NEW STORE

OLD NAVY

GAP INC.
CORPORATE ARCHITECTURE
HARRIS STREET
SAN FRANCISCO, CA 94105

REPS. ID.: 000054156

STORE NUMBER: 4458

STORE LOCATION: VINELAND
8231 VINELAND AVENUE
SUITE 2151
ORLANDO, FLORIDA 32821

DESIGN TYPE: P3
GENERATION: 17Q12
PROTOTYPE DATE: 07/18/16
OPENING: 2017

CONSULTANT INFO:

PROFESSIONAL STAMP:

ARCHITECT INFO:

B | R | R
architecture

ARCHITECT OF RECORD: BRR ARCHITECTURE, INC.
6700 ANTIPOCH PLAZA, SUITE 300, MENAQUAN, KANSAS 66204

ISSUE TYPE:

PERMIT/BID: 04/07/17

REVISIONS:

DRAWN BY: EE
A/E JOB NUMBER: 65013011

TITLE SHEET:
STOREFRONT AREA
ENLARGED PLAN &
DETAILS

SHEET NUMBER:
A2-3