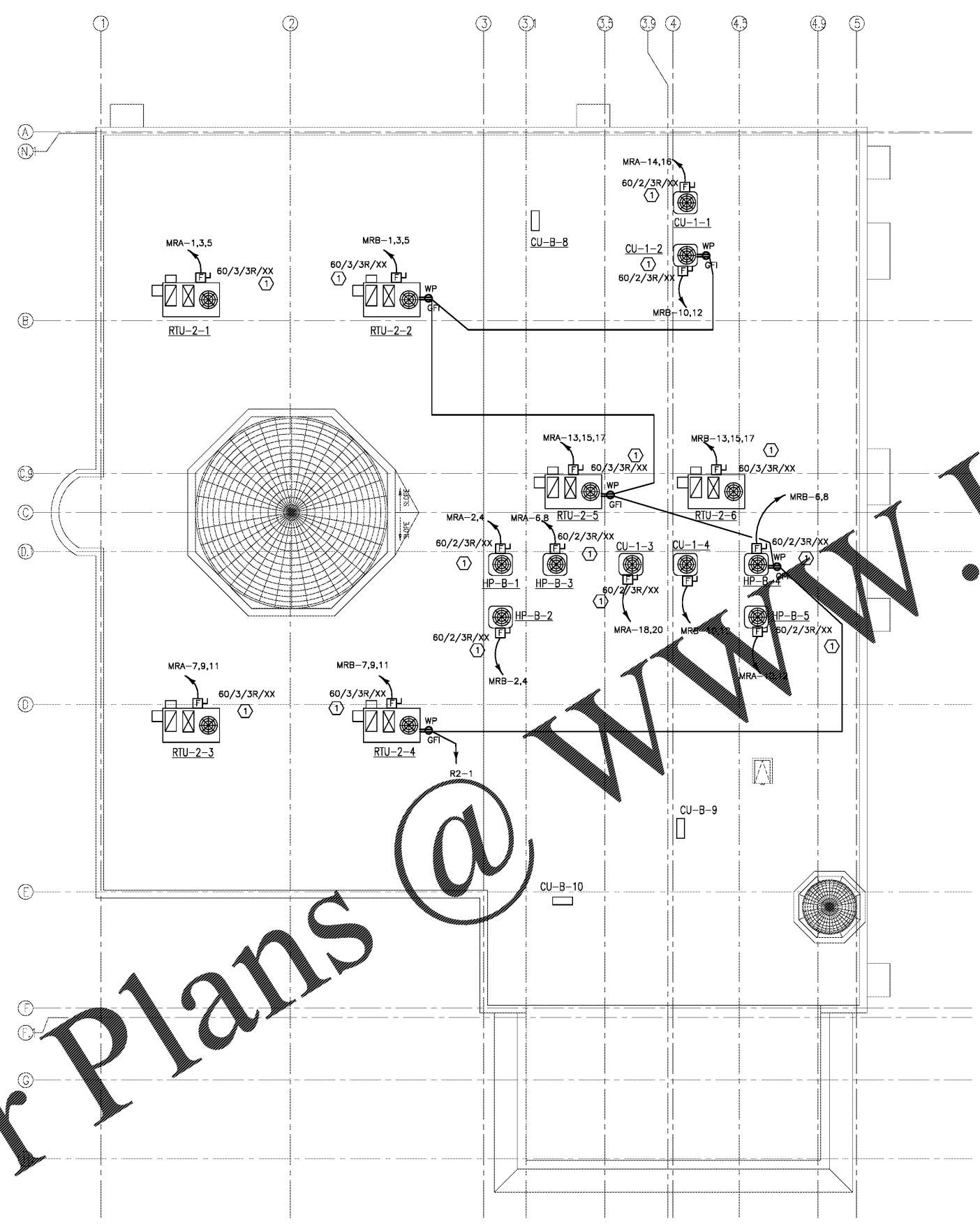


Order Plans @ WWW.LDENGINE.COM



1 ELECTRICAL POWER ROOF PLAN  
E404 SCALE: 1/8" = 1'-0" 0 4' 8' 16'

**POWER GENERAL NOTES:**

- THE ELECTRICAL CONTRACTOR SHALL REFER TO THE CIVIL, ARCHITECTURAL, STRUCTURAL, MECHANICAL AND PLUMBING DRAWING FOR THE EXACT BUILDINGS AND ROOMS LAYOUTS. ALL DIMENSIONS, SECTIONS, DETAILS, ELEVATIONS, VOLTAGE REQUIREMENTS AND PHYSICAL SIZE OF ALL EQUIPMENT FURNISHED BY OTHER TRADES. COORDINATE AND ADJUST ALL ELECTRICAL INSTALLATIONS ACCORDINGLY.
- ALL PENETRATIONS THRU FIRE RATED WALLS AND CEILINGS SHALL BE SEALED IN ACCORDANCE WITH THE NATIONAL ELECTRICAL CODE ARTICLE 300-21.
- TELEPHONE/COMPUTER OUTLET MOUNT DOUBLE GANG BOX WITH SINGLE PLASTER RING 18" ABOVE FINISHED FLOOR (UNLESS NOTED OTHERWISE, STUB-UP 3/4" CONDUIT TO ABOVE NEAREST ACCESSIBLE CEILING SPACE.
- INSTALL A FULL SIZE NEUTRAL FOR EACH CIRCUIT, GROUP, HOME RUN CIRCUITS PER NEC 310, TABLE 310.15 (B) (2) a
- ALL BRANCH CIRCUIT CONDUCTORS SHALL BE #12 AWG CU. UNLESS OTHERWISE SHOWN. BRANCH CIRCUITS HOMERUN CONDUCTORS SHALL BE #10 AWG CU. WHEN LENGTH EXCEEDS
- ALL OUTLETS AND DEVICE LOCATIONS AND MOUNTING HEIGHTS SHALL BE VERIFIED WITH THE OWNER AND ARCHITECT PRIOR TO ROUGH-IN. COORDINATE THE INSTALLATIONS WITH EQUIPMENT AND SYSTEMS SUPPLIERS AND OTHER TRADES.
- ELECTRICAL OUTLET BOXES LOCATED ON OPPOSITE SIDES OF FIRE RATED WALLS SHALL BE SEPARATED BY HORIZONTAL DISTANCE OF 24" MINIMUM.
- ELECTRICAL CONTRACTOR TO COORDINATE THE EXACT LOCATION AND ELECTRICAL REQUIREMENT FOR ALL HVAC EQUIPMENT WITH MECHANICAL CONTRACTOR AND/OR OWNER. VERIFY THE MINIMUM CIRCUIT AMPERE RATING AND MAXIMUM OVER-CURRENT PROTECTION DEVICE RATING OF THE ACTUAL UNIT BEING INSTALLED AND ADJUST THE FEEDER CIRCUIT ACCORDINGLY.
- ELECTRICAL CONTRACTOR TO COORDINATE WITH ALL THE EQUIPMENT MANUFACTURER POWER REQUIREMENTS PRIOR TO INSTALLATION.

**POWER KEY NOTES:**

- 1 SUPPLY AND INSTALL FUSED DISCONNECT SWITCH. REFER TO MECHANICAL EQUIPMENT MANUFACTURER'S SHOP DRAWING FOR EXACT DISCONNECT SIZE, VOLTAGE, PHASE AND TYPE. ADJUST DISCONNECT SIZE AND TYPE ACCORDINGLY. DISCONNECT SHALL BE FUSED AS PER MANUFACTURER REQUIREMENTS.

**DESIGN BUILD**  
**BLACKWATER CONSTRUCTION GROUP, LLC**  
 2200 SATELLITE BLVD, DULUTH GA 30092  
 TEL: (770) 455-5569

**DESIGN CONSULTANTS**  
**DESIGN SOLUTIONS LLC**  
 1000 S. GOSWORTHY BLVD, SUITE 100  
 ATLANTA, GA 30328  
 Phone: 404-740-7587

**ARCHITECT OF RECORD**  
**ROBERT J LARA, AIA**  
 8450 SW 201 ST.  
 CUTLER BAY, FL 33189

**STRUCTURAL**  
**ENGQUEST**  
 3550 ENGINEERING DRIVE, SUITE 175  
 PEACHTREE CORNERS, GA 30092  
 TEL: (770) 906-4670  
 www.engquest.com

**MEP**  
**ENGQUEST**  
 3550 ENGINEERING DRIVE, SUITE 175  
 PEACHTREE CORNERS, GA 30092  
 TEL: (770) 906-4670  
 www.engquest.com

*Robert J. Lara*  
 PE032226  
 PROFESSIONAL ENGINEER  
 CIVIL  
 12/05/2014

NOTES:

REVISION #	DATE	REMARKS

ISSUE DATE	ISSUED TO:	ISSUED FOR:
10-02-2014	COUNTY	PERMITS

PROJECT ADDRESS:  
**MASJID AL-MOMINEEN**  
 837 NORTH INDIAN CREEK DRIVE  
 CLARKSTON, DEKALB COUNTY  
 GEORGIA, 30021

LAYOUT:  
**ELECTRICAL ROOF PLAN**

PAPER SIZE: 24X36 (ARCH D)  
 SCALE: AS NOTED

SHEET NUMBER:  
**E404**