

**ELEVATOR KEY NOTES:**

- 1 ELEVATOR DISCONNECT SWITCH (SMALL 40-HP) 200 AMP, 3-POLE HEAVY DUTY WITH (2) CLASS "RK-1" FUSES. LOCATE AS DIRECTED BY THE ELEVATOR SUPPLIER / CONTRACTOR. ELEVATOR DISCONNECTING MEANS SHALL BE ARRANGED TO BE LOCKED IN THE OPEN POSITION. 208 VOLTS, 3-PHASE POWER SUPPLY. DISCONNECT SWITCH SHALL BE FUSED AS PER MANUFACTURER REQUIREMENT.
- 2 FUSIBLE DISCONNECT SWITCH FOR ELEVATOR CABINS FAN AND LIGHTS. PROVIDE HEAVY DUTY TYPE, 30 AMP, 2-POLE, CLASS "RK-5" FUSES AND FUSED DISCONNECT SWITCH AS PER MANUFACTURER REQUIREMENTS.
- 3 HEAT DETECTOR LOCATED IN THE ELEVATOR MACHINE ROOM SHALL BE CONNECTED TO SHUNT TRIP ELEVATOR CIRCUIT BREAKER (THUS REMOVING POWER TO ELEVATOR) AND SEND AN ALARM SIGNAL TO THE FIRE ALARM CONTROL PANEL PRIOR TO ACTIVATION OF SPRINKLER HEAD IN THE ELEVATOR MACHINE ROOM. 135 DEG. FIXED HEAT DETECTORS SHALL BE RATED FOR AT LEAST 25 FOOT SPACING AND SHALL BE WITHIN 5 FEET OF SPRINKLER HEAD.
- 4 PHOTOELECTRIC SMOKE DETECTOR WITH AUXILIARY FORM "C" CONTACTS IN ELEVATOR MACHINE ROOM FOR ELEVATOR RECALL. INSTALL 2#14 IN 1/2" TO ELEVATOR CONTROL PANEL.
- 5 HEAT DETECTOR LOCATED AT TOP OF ELEVATOR SHAFT SHALL BE CONNECTED TO SHUNT TRIP ELEVATOR CIRCUIT BREAKER (THUS REMOVING POWER TO ELEVATOR) AND SEND AN ALARM SIGNAL TO THE FIRE ALARM CONTROL PANEL PRIOR TO ACTIVATION OF SPRINKLER HEAD IN THE ELEVATOR MACHINE ROOM. 135 DEG. FIXED HEAT DETECTORS SHALL BE RATED FOR AT LEAST 25 FOOT SPACING AND SHALL BE WITHIN 5 FEET OF SPRINKLER HEAD.
- 6 PHOTO ELECTRIC SMOKE DETECTOR WITH AUXILIARY FORM "C" CONTACTS AT TOP OF ELEVATOR SHAFT FOR ELEVATOR RECALL. INSTALL 2#14 IN 1/2" TO ELEVATOR CONTROL PANEL.
- 7 ENCLOSED SHUNT TRIP CIRCUIT BREAKER FOR ELEVATOR SHUT DOWN. 20 VOLT SHUNT TRIP COIL. FURNISHED AND INSTALLED BY ELECTRICAL CONTRACTOR.  
  
USE ELEVATOR ROOM RECEPTACLE POWER FOR CONTROL OF SHUNT TRIP BREAKER. HEAT DETECTORS SHALL BE WIRED IN SERIES WITH SHUNT TRIP COIL (2#12, #12 BOND, 1/2")
- 8 ELEVATOR PIT LIGHTS AND RECEPTACLE. LOCATE PIT LIGHT SWITCH AND RECEPTACLE AS DIRECTED BY THE ELEVATOR EQUIPMENT SUPPLIER/CONTRACTOR.
- 9 SUMP PUMP - CONNECT AS PER MANUFACTURER'S WIRING WITH THE ELEVATOR SUPPLIER / CONTRACTOR PRIOR TO ROUGH-IN.
- 10 LOBBY PHOTO ELECTRIC SMOKE DETECTOR WITH AUXILIARY FORM "C" CONTACTS AT TOP OF ELEVATOR SHAFT FOR ELEVATOR RECALL.

**ELEVATOR SPECIAL NOTE**

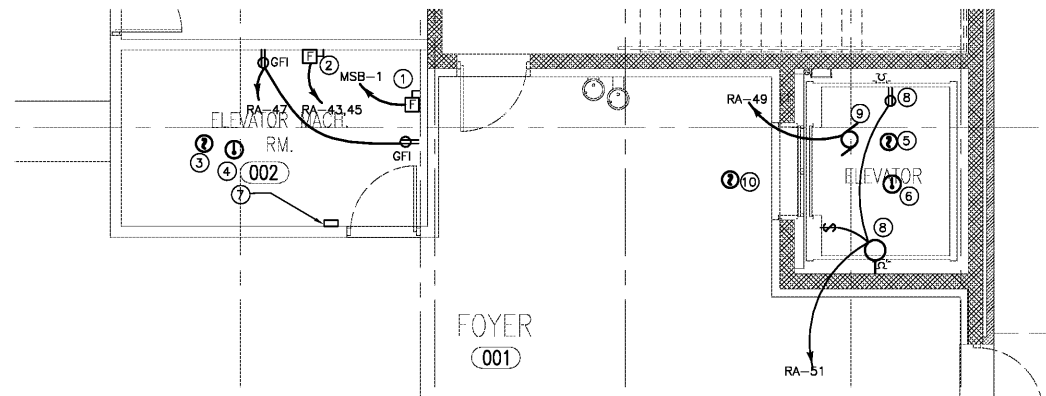
1. ELECTRICAL CONTRACTOR IS RESPONSIBLE TO COORDINATE WITH ELEVATOR CONSULTANT FOR HORSE POWER AND POWER REQUIREMENTS. CONTRACTOR TO BE ADJUST POWER ACCORDINGLY NO ADDITIONAL COST TO OWNER.

**POWER GENERAL NOTES:**

- A. THE ELECTRICAL CONTRACTOR SHALL REFER TO THE CIVIL, ARCHITECTURAL, STRUCTURAL, MECHANICAL AND PLUMBING DRAWING FOR THE EXACT BUILDINGS AND ROOMS LAYOUTS. ALL DIMENSIONS, SECTIONS, DETAILS, ELEVATIONS, VOLTAGE REQUIREMENTS AND PHYSICAL SIZE OF ALL EQUIPMENT FURNISHED BY OTHER TRADES. COORDINATE AND ADJUST ALL ELECTRICAL INSTALLATIONS ACCORDINGLY.
- B. ALL PENETRATIONS THRU FIRE RATED WALLS AND CEILINGS SHALL BE SEALED IN ACCORDANCE WITH THE NATIONAL ELECTRICAL CODE ARTICLE 300-21.
- C. TELEPHONE/COMPUTER OUTLET MOUNT DOUBLE GANG BOX WITH SINGLE PLASTER RING 18" ABOVE FINISHED FLOOR (UNLESS NOTED OTHERWISE, STUB-UP 3/4" CONDUIT TO ABOVE NEAREST ACCESSIBLE CEILING SPACE).
- D. INSTALL A FULL SIZE NEUTRAL FOR EACH CIRCUIT, GROUP, HOME RUN CIRCUITS PER NEC 310, TABLE 310.15 (B) (2) a
- E. ALL BRANCH CIRCUIT CONDUCTORS SHALL BE #12 AWG CU. UNLESS OTHERWISE SHOWN. BRANCH CIRCUITS HOMERUN CONDUCTORS SHALL BE #10 AWG CU. WHEN LENGTH EXCEEDS
- F. ALL OUTLETS AND DEVICE LOCATIONS AND MOUNTING HEIGHTS SHALL BE VERIFIED WITH THE OWNER AND ARCHITECT PRIOR TO ROUGH-IN. COORDINATE THE INSTALLATIONS WITH EQUIPMENT AND SYSTEMS SUPPLIERS AND OTHER TRADES.
- G. ELECTRICAL OUTLET BOXES LOCATED ON OPPOSITE SIDES OF FIRE RATED WALLS SHALL BE SEPARATED BY HORIZONTAL DISTANCE OF 24" MINIMUM.
- H. ELECTRICAL CONTRACTOR TO COORDINATE THE EXACT LOCATION AND ELECTRICAL REQUIREMENT FOR ALL HVAC EQUIPMENT WITH MECHANICAL CONTRACTOR AND/OR OWNER. VERIFY THE MINIMUM CIRCUIT AMPERE RATING AND MAXIMUM OVER-CURRENT PROTECTION DEVICE RATING OF THE ACTUAL UNIT BEING INSTALLED AND ADJUST THE FEEDER CIRCUIT ACCORDINGLY.
- I. ELECTRICAL CONTRACTOR TO COORDINATE WITH ALL THE EQUIPMENT MANUFACTURER POWER REQUIREMENTS PRIOR TO INSTALLATION.

**POWER KEY NOTES:**

- 1 PROVIDE REAR OUTLET WITH BRAS COVER.
- 2 JUNCTION BOX WITH SHUNT TRIP HOOD POWER. FIELD VERIFY ELECTRICAL REQUIREMENTS WITH HOOD SUPPLIER.
- 3 JUNCTION BOX HOOD SUPPRESSION SYSTEM POWER. FIELD VERIFY ELECTRICAL REQUIREMENTS WITH HOOD SUPPLIER.
- 4 CONTRACTOR TO PROVIDE 30 POLE LIGHTING CONTRACTOR AND A TIME CLOCK.
- 5 JUNCTION BOX WITH MOTOR RATED TOGGLE SWITCH IN WEATHER PROOF ENCLOSURE, FOR CONNECTION TO EVAPORATOR UNIT.
- 6 WALK IN COOLER COMPRESSOR. FIELD COORDINATE COMPRESSOR EXACT LOCATION. COORDINATE WITH EQUIPMENT MANUFACTURER SHOP DRAWINGS FOR EXACT DISCONNECT SIZE, VOLTAGE, PHASE AND TYPE. ADJUST DISCONNECT SIZE AND TYPE ACCORDINGLY. FUSE PER UNIT NAME PLATE.
- 7 PROVIDE 8'-0" H X 4'-0" W X 3/8" FIRE RETAIN PAINTS TELEPHONE BACKBOARD.
- 8 PROVIDE 2-2" EMPTY CONDUIT WITH PULL STRING FOR TELEPHONE AND DATA CABLE. RUN CONDUIT UNDERGROUND FROM ELECTRICAL ROOM TO PROPERTY LINE TELCO DEMARCATION POINT. CONTRACTOR TO FIELD COORDINATE TELCO DEMARCATION POINT.
- 9 SUPPLY AND INSTALL FUSIBLE DISCONNECT SWITCH. REFER TO MECHANICAL EQUIPMENT MANUFACTURER SHOP DRAWING FOR EXACT DISCONNECT SIZE, VOLTAGE, PHASE AND TYPE. ADJUST DISCONNECT SIZE AND TYPE ACCORDINGLY.
- 10 SUPPLY AND INSTALL NON-FUSE DISCONNECT SWITCH. REFER TO MECHANICAL EQUIPMENT MANUFACTURER SHOP DRAWING FOR EXACT DISCONNECT SIZE, VOLTAGE, PHASE AND TYPE. ADJUST DISCONNECT SIZE AND TYPE ACCORDINGLY.
- 11 FIRE ALARM CONTROL PANEL POWER.
- 12 FIRE ALARM REMOTE ANNUNCIATOR PANEL POWER.



**2 ELEVATOR PART PLAN**

E401 SCALE: 1/4" = 1'-0"



**Order Plans**  
**ELECTRICAL POWER BASEMENT FLOOR PLAN**  
 E401 SCALE: 1/8" = 1'-0"

**DESIGN BUILD**  
**BLACKWATER CONSTRUCTION GROUP, LLC**  
 2200 SATELLITE BLVD, DULUTH GA 30092  
 TEL: (770) 455-1569

**DESIGN CONSULTANTS**  
**DESIGN SOLUTIONS LLC**  
 1105 COMMERCE ST. SUITE 200  
 ATLANTA, GA 30309  
 Phone: 404-740-7287

**ARCHITECT OF RECORD**  
**ROBERT J LARA, AIA**  
 8450 SW 201 ST.  
 CUTLER BAY, FL 33189

**STRUCTURAL**  
**ENGQUEST**  
 3350 ENGINEERING DRIVE, SUITE 175  
 PEACHTREE CORNERS, GA 30092  
 TEL: (770) 906-4670  
 WWW.ENGQUEST.COM

**MEP**  
**ENGQUEST**  
 3350 ENGINEERING DRIVE, SUITE 175  
 PEACHTREE CORNERS, GA 30092  
 TEL: (770) 906-4670  
 WWW.ENGQUEST.COM

**NOTES:**

REVISION #	DATE	REMARKS

**ISSUE DATE:** 10-02-2014  
**ISSUED TO:** COUNTY PERMITS  
**ISSUED FOR:** PERMITS

**PROJECT ADDRESS:**  
**MASJID AL-MOMINEEN**  
 837 NORTH INDIAN CREEK DRIVE  
 CLARKSTON, DEKALB COUNTY  
 GEORGIA, 30021

**LAYOUT:**  
**ELECTRICAL POWER BASEMENT FLOOR PLAN**

**PAPER SIZE:** 24X36 (ARCH D)  
**SCALE:** AS NOTED

**SHEET NUMBER:**  
**E401**