

ELECTRICAL LEGEND			
(NOTE: ALL SYMBOLS SHOWN MAY NOT APPEAR ON DRAWINGS AND ARE USED AS APPLICABLE TO THIS PROJECT)			
SYMBOL	DESCRIPTION	REMARKS	MOUNTING HEIGHT TO CENTERLINE UNO
POWER			
	CONDUIT CONCEALED IN WALL OR CEILING		
	CONDUIT CONCEALED IN FLOOR (OR BELOW GRADE ON SITE PLAN)		
	CONDUIT EXPOSED ON WALL OR CEILING		
	HOMERUN CONDUIT		
	TELEPHONE CONDUIT CONCEALED UNO (MIN 3/4")		
	SURFACE METAL RACEWAY		
	FLEXIBLE CONNECTION, TYPE AS NOTED		
	OVERHEAD UTILITIES		
	UNDERGROUND POWER		
	UNDERGROUND TELCO		
	WALL MOUNTED JUNCTION BOX		
	JUNCTION BOX		
	WEATHERPROOF JUNCTION BOX		
	FLOOR MOUNTED JUNCTION BOX		
	UNFUSED DISCONNECT SWITCH, RATING/POLES/NEMA RATING (60/3/1)		
	DISCONNECT BY OTHERS		
	FUSED DISCONNECT SWITCH, RATING/POLES/NEMA RATING/FUSE SIZE (60/3/3R/40)		
	POWER POLE WITH VOICE/DATA & POWER RACEWAYS		
	WATER HEATER		
	ELECTRICAL PANEL		
	EQUIPMENT AS INDICATED		
	HAND HOLE		
	MAN HOLE (REFERENCE SPECIFICATIONS)		
	CONDUIT		
	REMOTE PUSH BUTTON		
	SINGLE RECEPT., AMP., VOLTAGE, NEMA CONFIGURATION AS REQUIRED OR AS NOTED		
	120V. DUPLEX RECEPTACLE		18"
	120V. COUNTER TOP DUPLEX RECEPTACLE		42"
	120V. DEDICATED DUPLEX RECEPTACLE		18"
	120V. QUADRUPLEX RECEPTACLE		18"
	120V. DUPLEX RECEPTACLE FOR TV POWER		SEE PLANS
	120V. GFI RECEPTACLE		
	120V. SQUARE OR ROUND FLOOR BOX WITH (1) DUPLEX RECEPTACLE		
	SQUARE OR ROUND FLOOR BOX WITH (1) DUPLEX RECEPTACLE		
	PHOTO-ELECTRIC SWITCH		
	ON-OFF TIME CLOCK		
	LIGHTING CONTACTOR		
	COMBINATION MOTOR STARTER DISCONNECT		
	POWER POLE		
	LOW VOLTAGE COMMUNICATION CIRCUIT TRANSIENT VOLTAGE SURGE		
	CIRCUIT BREAKER		
	MOTOR		
	TRANSFORMER		
	PULL BOX		
	DENOTES CONDUIT TURNING UP IN PLAN VIEW		
	DENOTES CONDUIT TURNING DOWN IN PLAN VIEW		
	DENOTES CHANGE IN CONDUIT ELEVATION IN PLAN VIEW		
	ELECTRICAL METER		
	MOTOR RATED SWITCH		
LIGHTING			
	SURFACE MOUNTED INCANDESCENT OR FLUORESCENT LIGHT FIXTURE		
	SURFACE MOUNTED OR PENDENT FLUORESCENT LIGHT FIXTURE		
	SURFACE MOUNTED OR PENDENT EMERGENCY FLUORESCENT LIGHT FIXTURE		
	RECESSED INCANDESCENT OR FLUORESCENT DOWN LIGHT FIXTURE		
	RECESSED INCANDESCENT OR FLUORESCENT EMERGENCY DOWN LIGHT FIXTURE		
	RECESSED EMERGENCY FLUORESCENT LIGHT FIXTURE		
	RECESSED FLUORESCENT LIGHT FIXTURE		
	SURFACE MOUNTED WALL INCANDESCENT OR HID LIGHT FIXTURE		
	RECESSED WALL INCANDESCENT OR HID LIGHT FIXTURE		
	TWO HEAD BATTERY POWERED EMERGENCY EGRESS LIGHT		
	EXIT LIGHT, WALL MOUNTED		
	EXIT LIGHT, WALL MOUNTED WITH DIRECTIONAL ARROW		
	EXIT LIGHT, CEILING MOUNTED		
	EXIT LIGHT, CEILING MOUNTED WITH DIRECTIONAL ARROW		
	AREA OR STREET LIGHT FIXTURE		
	AREA OR STREET LIGHT FIXTURE		
	SINGLE POLE SWITCH		46"
	THREE-WAY SWITCH		46"
	FOUR-WAY SWITCH		46"
	SINGLE POLE DIMMER SWITCH 600 WATT		46"
	THERMAL MOTOR SWITCH-(FBE)		46"
	SINGLE POLE SWITCH WITH PILOT LIGHT		46"
	SINGLE POLE SWITCH, WEATHERPROOF		46"
SYSTEM			
	TELEPHONE OUTLET & PLATE		
	GANG DATA OUTLET & PLATE		
	COMBINATION TELEPHONE & DATA OUTLET		
	TELEPHONE BACKBOARD		
GROUNDING			
	GROUND ROD C/W INSPECTION SLEEVE		
	GROUNDING ELECTRODE		
	EXOTHERMIC WELD CONNECTION		
	MECHANICAL CONNECTION (eg LUG, C-TAP)		

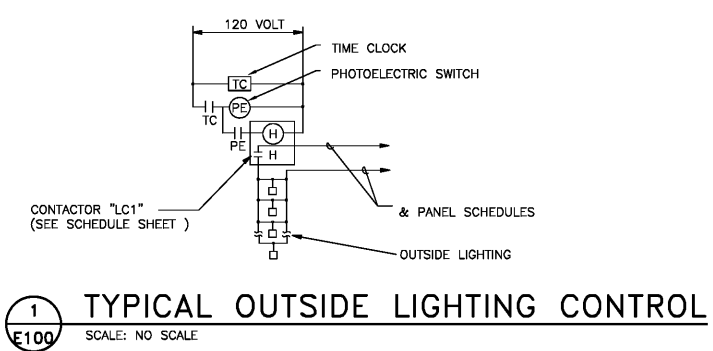
ABBREVIATIONS	
AFG	ABOVE FINISHED GRADE
ABV	MOUNT ABOVE COUNTER
ABC	ABOVE CEILING
AFF	ABOVE FINISHED FLOOR
AIC	AMPERE INTERRUPTING CAPACITY
ATS	AUTOMATIC TRANSFER SWITCH
AWG	AMERICAN WIRE GAUGE
BFG	BELOW FINISHED GRADE
BKR	BREAKER
C	CONDUIT
C/W	COMPLETE WITH
CKT	CIRCUIT
CL	CENTER LINE
CLG	CEILING
CT	CURRENT TRANSFORMER
DF	ELECTRIC DRINKING FOUNTAIN
EC	EMPTY CONDUIT
ELEC	ELECTRICAL
EX	EXISTING
FA	FIRE ALARM
FAA	FIRE ALARM ANNUNCIATOR
FACP	FIRE ALARM CONTROL PANEL
FBE	FURNISHED & INSTALLED BY ELECTRICAL CONTRACTOR
FBO	FURNISHED BY OTHERS, INSTALLED BY ELECTRICAL CONTRACTOR
FS	FIRE SUPPRESSION
FSCP	FIRE SUPPRESSION CONTROL PANEL
G	GROUND
GND	GROUND
GEC	GROUNDING ELECTRODE CONDUCTOR
GFI	GROUND FAULT INTERRUPTER
HP	HORSEPOWER
I	IONIZATION
IMC	INTERMEDIATE METALLIC CONDUIT (GALVANIZED)
JB	JUNCTION BOX
KCMIL	THOUSAND CIRCULAR MILS
LV	LOW VOLTAGE
MCB	MAIN CIRCUIT BREAKER
MLO	MAIN LUG ONLY
MTS	MANUAL TRANSFER SWITCH
NC	NORMALLY CLOSED
NIC	NOT IN CONTRACT
NL	NIGHT LIGHT
NO	NORMALLY OPEN
NTS	NOT TO SCALE
OC	OVER COUNTER
P	PHOTOELECTRIC
PM	POWER MONITOR
RMC	RIGID METALLIC CONDUIT (GALVANIZED)
RNC	RIGID NON-METALLIC CONDUIT
S/C	SEPARATE CIRCUIT
SCH	SCHEDULE
SPST	SINGLE POLE SINGLE THROW
TB	TELEPHONE TERMINAL BOARD
THD	TOTAL HARMONIC DISTORTION
TVSS	TRANSIENT VOLTAGE SURGE SUPPRESSOR
U/G	UNDERGROUND
UL	UNDERWRITERS LABORATORIES
UNO	UNLESS NOTED OTHERWISE
W	WALL MOUNTED
WH	WATER HEATER
WP	WEATHER PROOF, NEMA 3R

LIGHTING CONTACTOR SCHEDULE					
I.D.	CONTACT AMPERE RATING	NO. OF POLES	ENCLOSURE	COIL VOLTAGE	REMARKS
LC1	30	16	NEMA 1	120	CONTROLLED PHOTOCELL ON - TIMECLOCK OFF

LIGHTING FIXTURE SCHEDULE					
(COORDINATE WITH OWNER FOR ALL LIGHT FIXTURE TYPES PRIOR TO INSTALL)					
TYPE	MANUFACTURER	CATALOG NUMBER	NUMBER & SIZE LAMPS	MOUNT	REMARKS
A	LITHONIA OR APPROVED EQUAL	ZTL2 33L FW A19 MVLTD D38 LP835 N100	LED INCLUDED	RECESSED	2X2 LED LIGHT FIXTURE
B	LITHONIA OR APPROVED EQUAL	LC6LED24-120V	LED INCLUDED	RECESSED	LED DOWN LIGHT
C	LUMENS LIGHTING OR APPROVED EQUAL	ACUO LED SCENCE	LED INCLUDED	WALL	INTERIOR WALL SCENCE
D	LITHONIA	2AW-2-32-120-GEB10IS	3-32 TRIP35	SURFACE	1/4" PARAPAROUNDS SURFACE MOUNTED FIXTURE
F	FUTRA LIGHTING OR APPROVED EQUAL	10813-BN-120-GEB-EL	2-F32 TRIP35	SURFACE	SURFACE DECORATIVE LINER FLUORESCENT FIXTURE IN THE STAIRWELL WITH BATTERY BACK UP
G	OWNER SUPPLY	PENDENT DECORATIVE CHANDELIER LIGHTS	XXX	PENDENT	COORDINATE WITH OWNER FOR EXACT TYPE
WS	LITHONIA OR APPROVED EQUAL	WSQ LED 2 1025 140K-SR3-177V-PE-DDBKB	LED INCLUDE	WALL	LED WALL-MOUNTED FRONT SCENCE FULL CUTOFF FIXTURE WITH PHOTOCELL INCLUDED. CONTRACTOR TO FURNISH NECESSARY ACCESSORIES TO INSTALL ON THE WALL.
EMXT	COOPER LIGHTING OR APPROVED EQUAL	LD-WP-FC-4A-247-ED-EMLED-CD	LED	WALL	LED WALL PACK WITH EMERGENCY BATTERY BACK UP FOR EXTERIOR. MOUNT ABOVE DOOR.
EM	LITHONIA OR APPROVED EQUAL	6ELM2-MVLT	INCLUDED	WALL	EMERGENCY LIGHT WITH BATTERY BACK UP
X	LITHONIA OR APPROVED EQUAL	EDGR-1(2)-R-MVLT-EL N-SD	LED	WALL OR CEILING MOUNTED	EXIST SIGN WITH BATTERY BACK UP. SINGLE FACE OR DOUBLE FACE EXIT SIGN SHALL BE MOUNTED AS INDICATED ON THE DRAWING. DIRECTIONAL ARROWS AS INDICATED IN THE DRAWING

GENERAL NOTES

- ALL ELECTRICAL WORK SHOWN ON THESE DRAWINGS IS THE RESPONSIBILITY OF THE ELECTRICAL CONTRACTOR UNLESS NOTED OTHERWISE ON THE DRAWINGS OR IN THE SPECIFICATIONS. FABRICATION AND INSTALLATION OF THE COMPLETE ELECTRICAL SYSTEM SHALL BE DONE IN A FIRST CLASS WORKMANSHIP BY QUALIFIED TRADES PERSONS EXPERIENCED IN SUCH WORK.
- SUBMISSION OF BID FOR THE ELECTRICAL WORK INDICATES THAT THE ELECTRICAL CONTRACTOR IS FAMILIAR WITH THE DESIGN INTENT, THE REQUIREMENTS OF THE PROJECT, REQUIREMENTS OF THE LOCAL ELECTRICAL AND TELEPHONE UTILITIES, AND LOCAL APPLICABLE CODES AND ORDINANCES.
- ALL ELECTRICAL WORK SHALL CONFORM TO THE EDITION OF THE NEC ACCEPTED BY THE LOCAL AUTHORITY HAVING JURISDICTION.
- SOME ASPECTS OF ELECTRICAL DESIGN ARE COMMONLY EXPRESSED IN SCHEMATIC FORM. IT IS THE RESPONSIBILITY OF THE ELECTRICAL CONTRACTOR TO INTERPRET THEM ACCURATELY AND CARRY OUT THE CONSTRUCTION AND/OR INSTALLATION SATISFACTORY TO THE CONSULTANT AND THE OWNER. IN CASE OF ANY UNCERTAINTIES OR AMBIGUITIES PROMPTLY CONSULT WITH THE PROJECT MANAGER FOR CLARIFICATION.
- ABBREVIATIONS AND ACRONYMS USED ON THE DRAWINGS ARE DESCRIBED IN THE ABBREVIATIONS SECTION OF THE DRAWINGS. SOME COMMONLY USED AND INDUSTRY STANDARD ABBREVIATIONS AND ACRONYMS MAY NOT BE DESCRIBED. IF A CLARIFICATION IS REQUIRED PROMPTLY CONTACT THE PROJECT MANAGER.
- SCHEDULE AND COORDINATE ALL WORK WITH OTHER TRADES BEFORE INSTALLATION OF EQUIPMENT TO AVOID CONFLICT DURING AND AFTER THE INSTALLATION.



DESIGN BUILD
BLACKWATER CONSTRUCTION GROUP, LLC
2200 SATELLITE BLVD, DULUTH GA 30092
TEL: (770) 455-1569

DESIGN CONSULTANTS
DESIGN SOLUTIONS LLC
www.designsolutions.com
Phone: 404-740-7587

ARCHITECT OF RECORD
ROBERT J LARA, AIA
8450 SW 201 ST.
CUTLER BAY, FL 33189

STRUCTURAL
ENGQUEST
3550 ENGINEERING DRIVE, SUITE 175
PEACHTREE CORNERS, GA 30092
TEL: (770) 906-4670
www.engquest.com

MEP
ENGQUEST
3550 ENGINEERING DRIVE, SUITE 175
PEACHTREE CORNERS, GA 30092
TEL: (770) 906-4670
www.engquest.com

PROFESSIONAL ENGINEER
PE032226
DRAFTER
01/09/2014

NOTES:

REVISION #	DATE	REMARKS

ISSUE DATE	ISSUED TO:	ISSUED FOR:
10-02-2014	COUNTY	PERMITS

PROJECT ADDRESS:
MASJID AL-MOMINEEN
837 NORTH INDIAN CREEK DRIVE
CLARKSTON, DEKALB COUNTY
GEORGIA, 30021

LAYOUT:
ELECTRICAL LEGEND,
SYMBOL, AND SCHEDULE

PAPER SIZE: 24X36 (ARCH D)
SCALE: AS NOTED

SHEET NUMBER:
E100

Order Plans @