

Order Plans

WWW.LDILine.com


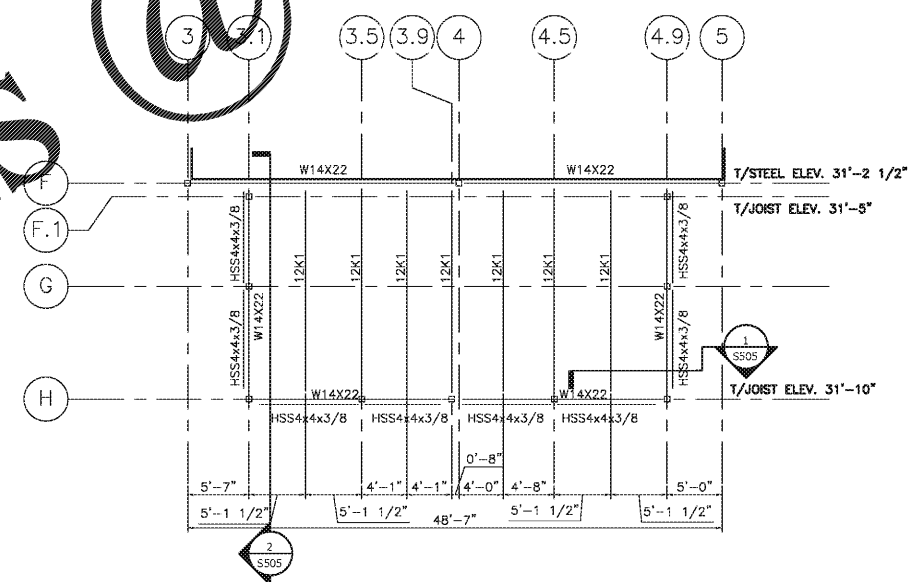
**DESIGN BUILD**  
 BLACKWATER CONSTRUCTION GROUP, LLC  
 2200 SATELLITE BLVD, DULUTH GA 30092  
 770-455-1569

**DESIGN CONSULTANTS**  
 DESIGN SOLUTIONS LLC  
 11080 MIDWAY DR, SUITE 100, DULUTH GA 30092  
 Phone: 404-740-7587

**ARCHITECT OF RECORD**  
 ROBERT J LARA, AIA  
 8450 SW 201 ST, CUTLER BAY, FL 33189

**STRUCTURAL & MEP**  
**ENGQUEST**  
 3550 ENGINEERING DRIVE, SUITE 175, PEACHTREE CORNERS, GA 30092  
 TEL: (678) 906-4670  
 www.engquest.com

**NOTES:**

- FRAMING NOTES:**
- SEE DWG S001, S002 AND S003 FOR STRUCTURAL STEEL DESIGN NOTES.
  - EXTEND BOTTOM CHORD OF JOISTS @ AHU.
  - ALL T/STEEL ELEV. GIVEN WITH RESPECT TO TOP OF FINISH FLOOR SLAB.
  - SEE DRAWING S004 FOR TYPICAL CONT. PERIMETER ANGLE SPLICE.
  - ANY LOAD SUSPENDED FROM THE ROOF STRUCTURE SHALL HANG DIRECTLY FROM THE BAR JOIST OR JOIST GIRDER. OTHERWISE, PROVIDE ADDITIONAL SUPPORT MATERIAL, DESIGNED TO CARRY THE LOAD BETWEEN THE STRUCTURAL MEMBERS. DO NOT SUPPORT LOADS FROM BRIDGING.
  - NOTIFY STRUCTURAL ENGINEER IF MECHANICAL, DUCT OR PIPING ARE PLACED IN LOCATIONS OTHER THAN THAT SHOWN ON FRAMING PLANS THAN THAT SHOWN ON FRAMING PLANS.
  - SEE DRAWING S002 FOR TYPICAL CONCENTRATED LOAD ON JOIST DETAIL.
  - ALL JOIST & GIRDER SIZES SHOWN INCLUDE ALL COLLATERAL LOADS NOTED ON PLAN EXCEPT FOR TOP CHORD COLLECTOR FORCES AND ROOF UPLIFT LOADING OR WHERE SP OR JCL IS NOTED.
  - BRIDGING: PROVIDE NUMBER OF ROWS OF HORIZONTAL OR DIAGONAL BRIDGING OF MATERIAL, SIZE AND TYPE REQUIRED BY SJI'S "SPECIFICATIONS" FOR TYPE OF JOIST, CHORD SIZE, SPACING AND SPAN. FURNISH ADDITIONAL ERECTION BRIDGING IF REQUIRED FOR STABILITY AND WHERE SPECIAL BRIDGING CONDITIONS ARE INDICATED ON THE DRAWINGS.
  - SPRINKLER HEAVY LINE LOADS (I.E. ANY SPRINKLER OR SIMILAR MAINS OVER 3" DIA.) FROM CENTER OF SUPPORT MEMBER (JOISTS, JOIST GIRDERS OR WF BEAMS) UTILIZING CENTER BEAM CLAMP OF TRAPEZE SYSTEM FROM CENTER OF MEMBER. SIDE MOUNTED CLAMPS, I.E. C-CLAMP OR ECCENTRIC BEAM CLAMP, WILL NOT BE ACCEPTED. ECCENTRIC LOAD ON JOIST IS UNACCEPTABLE. SIDE MOUNTED CLAMPS SHALL NOT SUPPORT ANY LOAD OVER 100 LBS. WHEN SUPPORTING MEMBER IS A JOIST OF JOIST GIRDER, REFER "PIPE MAIN SUPPORT DETAIL" ON TYPICAL DESIGN DETAILS DRAWING S004.
  - ROOF DECK SHALL BE 1 1/2" TYP B, 20 GA. METAL DECK.
  - FASTENER LAYOUT: 3/8"/5" SUPPORT FASTENERS: 5/8" PUDDLE WELDS SIDELAP FASTENERS: #10 TEK SCREWS ATTACH DECK TO PERIMETER SUPPORT WITH SAME FASTENER PATTERN AND TYPE SHOWN BUT SPACING NOT MORE THAN 6".
  - T/CONC. EL.+14'-0"
  - T/JOIST EL.+13'-7 1/2"
  - DESIGN LINE LOAD = 40 PSF
  - ← DENOTES SPAN DIRECTION OF METAL DECK.

REVISION #	DATE	REMARKS

ISSUE DATE	ISSUED TO:	ISSUED FOR:
10-02-2014	COUNTY	PERMITS

**PROJECT ADDRESS:**  
 MASJID AL-MOMINEEN  
 837 NORTH INDIAN CREEK DRIVE  
 CLARKSTON, DEKALB COUNTY  
 GEORGIA, 30021

**LAYOUT:**  
 PART.  
 ROOF FRAMING  
 PLAN

PAPER SIZE: 24X36 (ARCH D)  
 SCALE: AS NOTED

**SHEET NUMBER:**  
**S142**

PART. ROOF FRAMING PLAN @ PORCH  
 SCALE: 1/8" = 1'-0"