

DESIGN BUILD
BLACKWATER CONSTRUCTION GROUP, LLC
 2200 SATELLITE BLVD, DULUTH GA 30092
 770-455-1569


DESIGN CONSULTANTS
DESIGN SOLUTIONS LLC
 11060designsolutions.com
 Phone: 404-740-7587

ARCHITECT OF RECORD
ROBERT J LARA, AIA
 8450 SW 201 ST.
 CUTLER BAY, FL 33189

STRUCTURAL & MEP

ENGQUEST
 3550 ENGINEERING DRIVE, SUITE 175
 PEACHTREE CORNERS, GA 30092
 TEL: (678) 906-4670
 www.engquest.com

NOTES:



REVISION #	DATE	REMARKS

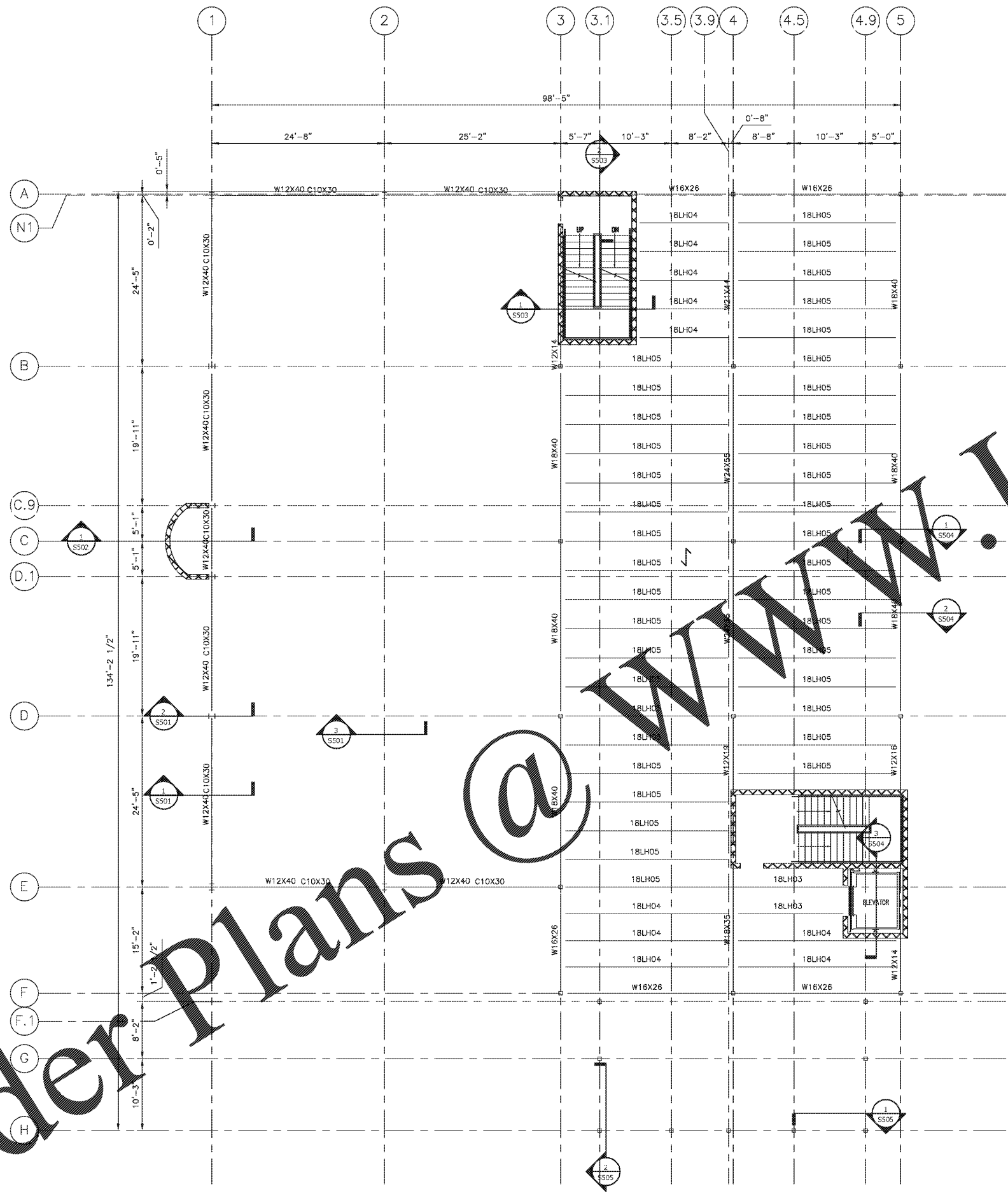
ISSUE DATE	ISSUED TO:	ISSUED FOR:
10-02-2014	COUNTY	PERMITS

PROJECT ADDRESS:
MASJID AL-MOMINEEN
 837 NORTH INDIAN CREEK DRIVE
 CLARKSTON, DEKALB COUNTY
 GEORGIA, 30021

LAYOUT:
SECOND FLOOR FRAMING PLAN

PAPER SIZE: 24x36 (ARCH D)
SCALE: AS NOTED

SHEET NUMBER:
S131



- FRAMING NOTES:**
- SEE DRAWING S001, S002 AND S003 FOR STRUCTURAL STEEL DESIGN NOTES.
 - BRIDGE BOTTOM CHORDS OF JOISTS @ JUI.
 - ALL STEEL ELEV. GIVEN WITH RESPECT TO TOP OF FINISH FLOOR SLAB.
 - SEE DRAWING S004 FOR TYPICAL CONCRETE PERIMETER ANGLE SPLICE. ANY LOADS SUSPENDED FROM THE JOIST STRUCTURE SHALL HANG DIRECTLY FROM THE BAR JOIST OR JOIST GIRDER. OTHERWISE, PROVIDE ADDITIONAL SUPPORT MATERIAL, DESIGNED TO CARRY THE LOAD BETWEEN THE STRUCTURAL MEMBERS. DO NOT SUPPORT LOADS FROM BRIDGING.
 - NOTIFY STRUCTURAL ENGINEER IF MECHANICAL, DUCT OR PIPING ARE PLACED IN LOCATIONS OTHER THAN THAT SHOWN ON FRAMING PLANS THAT SHOWN ON FRAMING PLANS.
 - SEE DRAWING S002 FOR TYPICAL CONCENTRATED LOAD ON JOIST DETAIL.
 - ALL JOIST & GIRDER SIZES SHOWN INCLUDE ALL COLLATERAL LOADS NOTED ON PLAN EXCEPT FOR TOP CHORD COLLECTOR FORCES AND ROOF UPLIFT LOADING OR WHERE SP OR JGL IS NOTED.
 - BRIDGING: PROVIDE NUMBER OF ROWS OF HORIZONTAL OR DIAGONAL BRIDGING OF MATERIAL, SIZE AND TYPE REQUIRED BY SJI'S "SPECIFICATIONS" FOR TYPE OF JOIST, CHORD SIZE, SPACING AND SPAN. FURNISH ADDITIONAL ERECTION BRIDGING IF REQUIRED FOR STABILITY AND WHERE SPECIAL BRIDGING CONDITIONS ARE INDICATED ON THE DRAWINGS.
 - SPRINKLER HEAVY LINE LOADS (I.E. ANY SPRINKLER OR SIMILAR MAINS OVER 3" DIA.) FROM CENTER OF SUPPORT MEMBER (JOISTS, JOIST GIRDERS OR WF BEAMS) UTILIZING CENTER BEAM CLAMP OF TRAPEZE SYSTEM FROM CENTER OF MEMBER. SIDE MOUNTED CLAMPS, I.E. C-CLAMP OR ECCENTRIC BEAM CLAMP, WILL NOT BE ACCEPTED. ECCENTRIC LOAD ON JOIST IS UNACCEPTABLE. SIDE MOUNTED CLAMPS SHALL NOT SUPPORT ANY LOAD OVER 100 LBS. WHEN SUPPORTING MEMBER IS A JOIST OF JOIST GIRDER. (REFER "PIPE MAIN SUPPORT DETAIL" ON TYPICAL DESIGN DETAILS DRAWING S004.
 - 3" CONCRETE SLAB W/ 1-LAYER 6#8-W2.1xW2.1 WWF ON 1.5C, 20 GA. METAL DECK (4 1/2" TOTAL THICKNESS)
 - FASTENER LAYOUT: 38/5/6
 SUPPORT FASTENERS: 5/8" PUDDLE WELDS
 SIDELAP FASTENERS: #10 TEK SCREWS
 ATTACH DECK TO PERIMETER SUPPORT WITH SAME FASTENER PATTERN AND TYPE SHOWN BUT SPACING NOT MORE THAN 6".
 - 1/2" CONC. EL.+14'-0"
 - 1/2" JOIST EL.+13'-7 1/2"
 - DESIGN LIVE LOAD = 40 PSF
 - ↔ DENOTES SPAN DIRECTION OF METAL DECK.

SECOND FLOOR FRAMING PLAN
SCALE: 1/8" = 1'-0"



Order Plans @ www.lmengine.com