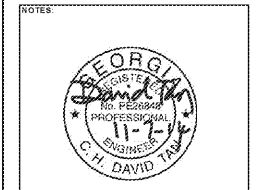


DESIGN BUILD
BLACKWATER CONSTRUCTION GROUP, LLC
 2200 SATELLITE BLVD, DULUTH GA 30092
 TEL: (770) 455-1569

DESIGN CONSULTANTS
DESIGN SOLUTIONS LLC
 11060 DESIGN SOLUTIONS LLC
 Phone: 404-740-7587

ARCHITECT OF RECORD
ROBERT J LARA, AIA
 8450 SW 201 ST
 CUTLER BAY, FL 33189

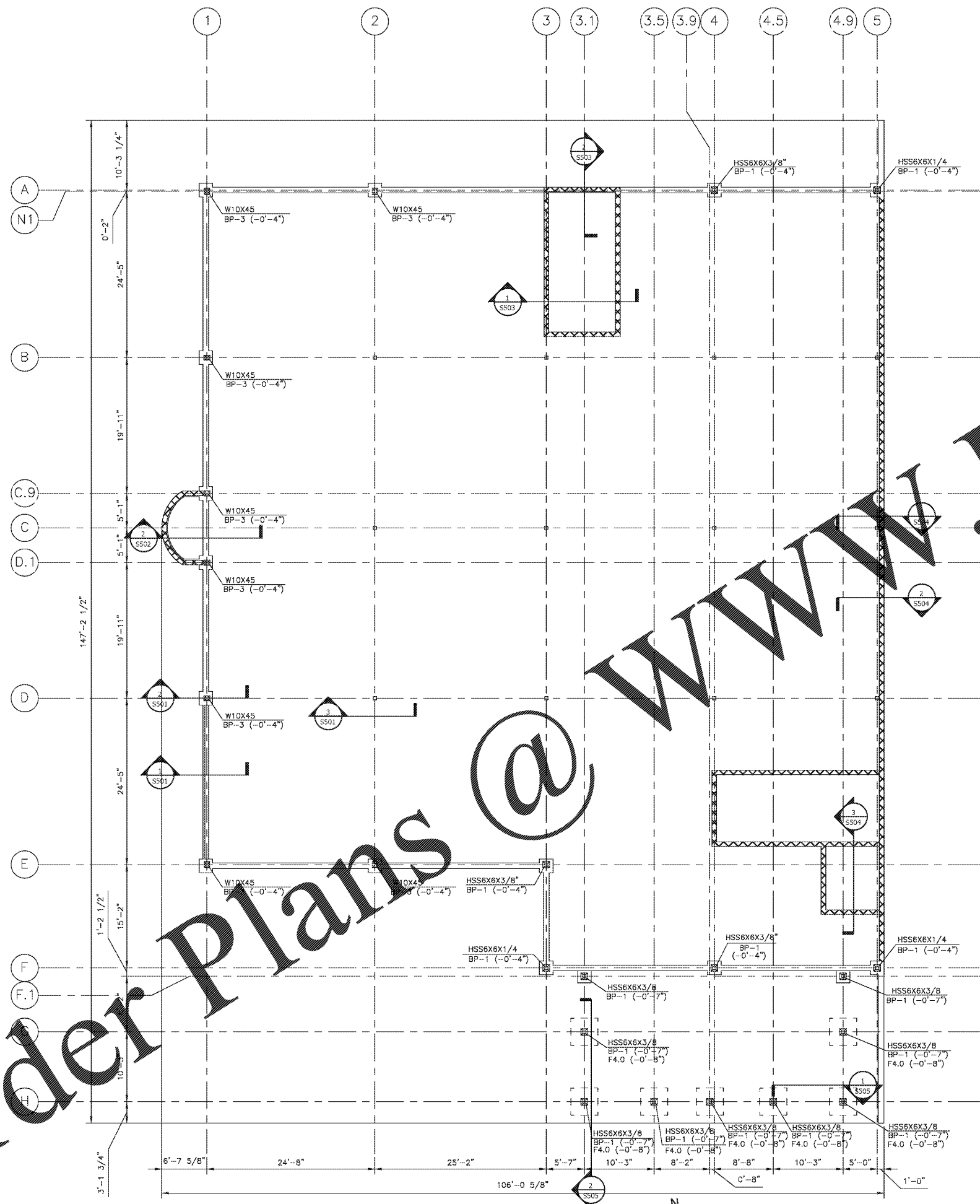
STRUCTURAL & MEP
ENGQUEST
 3550 ENGINEERING DRIVE, SUITE 175
 PEACHTREE CORNERS, GA 30092
 TEL: (678) 906-4670
 www.engquest.com



NOTES:

1. FINISHED FLOOR ELEV. = 12'-0" (REF.) SEE CIVIL DRAWINGS FOR ACTUAL.
2. BP-X (-X'-X") INDICATES BASE PLATE TYPE AND B/BASE PLATE ELEVATION RESPECTIVELY.
3. F, CF OR RFX.X (-X'-X") INDICATES FOOTING MARK AND I/FOOTING ELEVATION RESPECTIVELY.
4. SEE DRAWING S001, S002 AND S003 FOR STRUCTURAL AND DESIGN NOTES.
5. SEE DRAWING S004 FOR TYPICAL WALL JOINT, WALL AND FOOTING CORNER REINFORCING, SCHEDULES, STEP FOOTING, CHU JOINT AND BEAM REINFORCING, BASE PLATE, CONCRETE PIERS AND ANCHOR ROD DETAILS.
6. SEE ARCHITECTURAL DRAWINGS FOR STAIR LOCATIONS.
7. SEE ARCHITECTURAL DRAWINGS FOR FLOOR SLOPES AND DRAINS.
8. SEE PLUMBING DRAWINGS FOR UNDER FLOOR PLUMBING.
9. ALL FOOTINGS SHALL BE CENTERED UNDER COLUMNS OR GROUPS OF COLUMNS AND WALL CENTERLINES U.N.O.
10. CONTINUOUS FOOTINGS SHALL BE INTEGRAL WITH COLUMN FOOTINGS.

MARK	LENGTH	WIDTH	DEPTH	REINFORCEMENT			
				BOT. (LG.)	BOT. (SH.)	TOP (LG.)	TOP (SH.)
CF4.0	CONT.	4'-0"	1'-0"	5-#5 CONT. W/ #4x3'-6" @ 12" TRANSVERSE			
F4.0	4'-0"	3'-0"	1'-3"	5-#5	5-#5		
F5.0	5'-0"	5'-0"	1'-3"	8-#5	8-#5		
F6.0	6'-0"	6'-0"	1'-4"	6-#6	6-#6		
F7.0	7'-0"	7'-0"	1'-6"	7-#6	7-#6		
F8.0	8'-0"	8'-0"	1'-9"	7-#7	7-#7		
F9.0	9'-0"	9'-0"	1'-9"	9-#7	9-#7		
F10.0	10'-0"	10'-0"	2'-0"	10-#7	10-#7		



FIRST FLOOR FOUNDATION PLAN @ ELEV. -0'-8"
 SCALE: 1/8" = 1'-0"



Order Plans @

WWW.LDILine.com