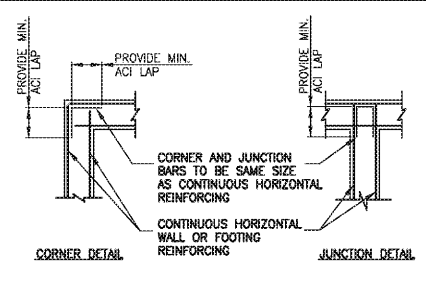
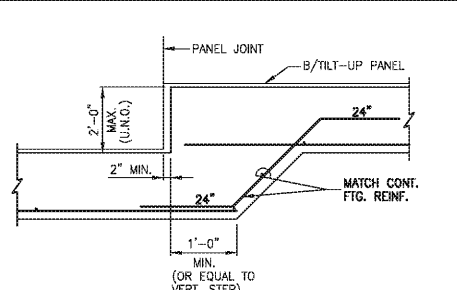


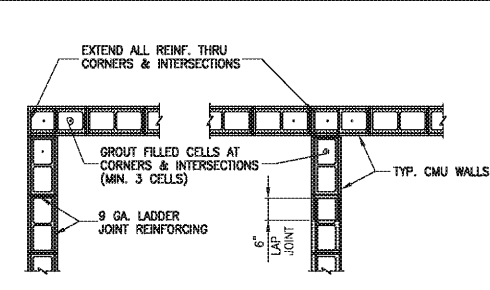
FOUNDATION WALL JOINT DETAILS
N.T.S.



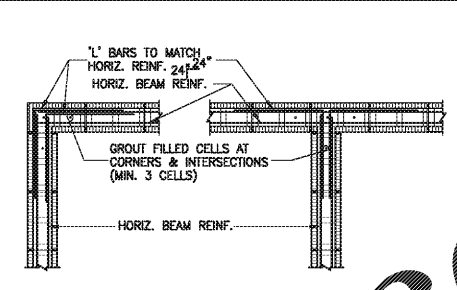
TYPICAL WALL AND FOOTING DETAILS
N.T.S.



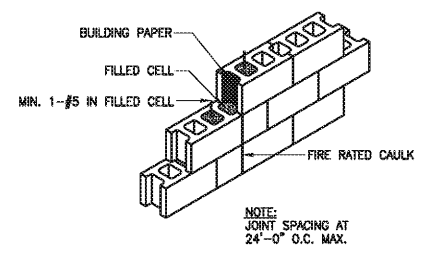
TYPICAL STEP FOOTING DETAIL
N.T.S.



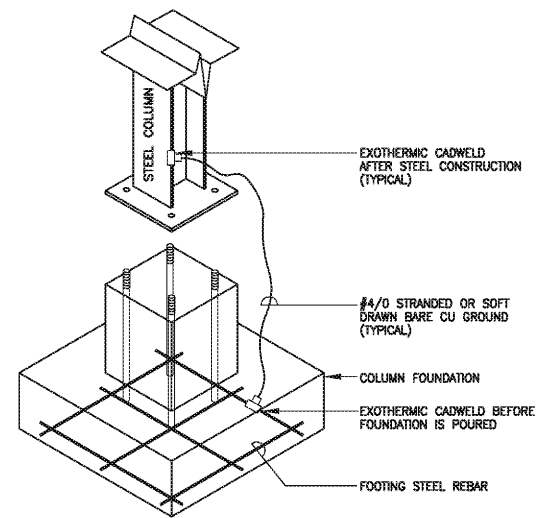
STANDARD JOINT REINFORCING
N.T.S.



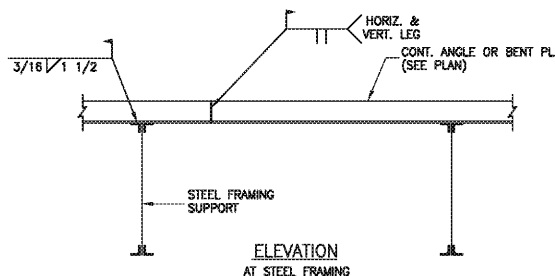
TYPICAL TIE OR DOUBLE KNOCKOUT BLOCK
N.T.S.



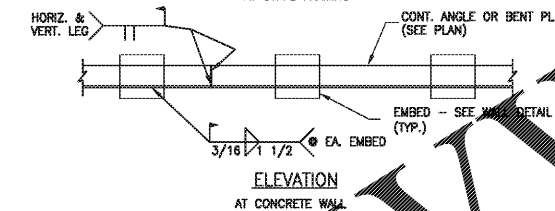
TYPICAL MASONRY WALL CONTROL JOINT
N.T.S.



TYPICAL COLUMN BONDING GROUND
NOTE: SEE GROUNDING LOCATION ON ELECTRICAL PLAN

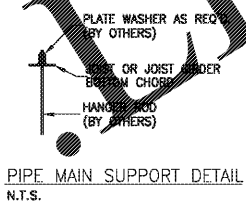


ELEVATION AT STEEL FRAMING



ELEVATION AT CONCRETE WALL

DIAPHRAGM CHORD ANGLE SPLICE DETAIL
N.T.S.



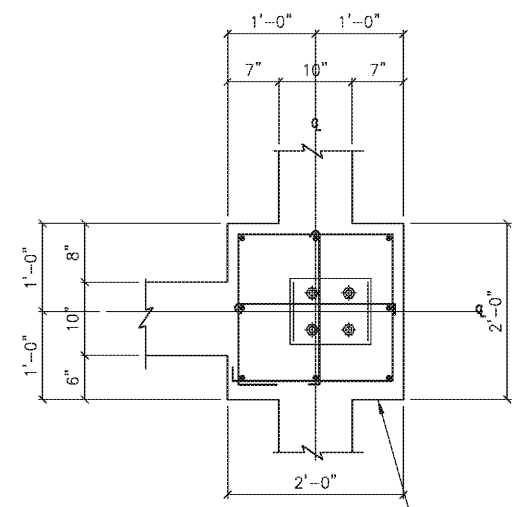
PIPE MAIN SUPPORT DETAIL
N.T.S.

CONCRETE MASONRY LINTEL SCHEDULE

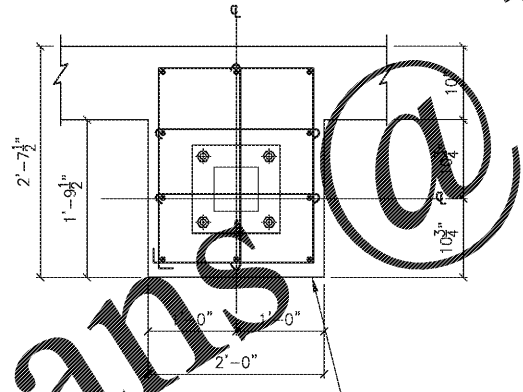
SPAN	DEPTH	REINFORCEMENT	
		8" WALL	12" WALL
UP TO 0'-0"	8"	2-#4 BOTTOM	
4'-0" TO 6'-0"	8"	2-#5 BOTTOM	
6'-0" TO 8'-0"	16"	2-#5 TOP & BOT *	
8'-0" TO 12'-0"	16"	2-#6 TOP & BOT *	2-#7 TOP & BOT *
12'-0" TO 16'-8"	16"	2-#7 TOP & BOT *	3-#7 TOP & BOT *

NOTES:
1. PROVIDE 8" MIN. BEARING EACH END.
2. REFER TO ARCH. & MECH. DWGS. FOR EXACT SIZE & LOCATION OF MASONRY OPENINGS.

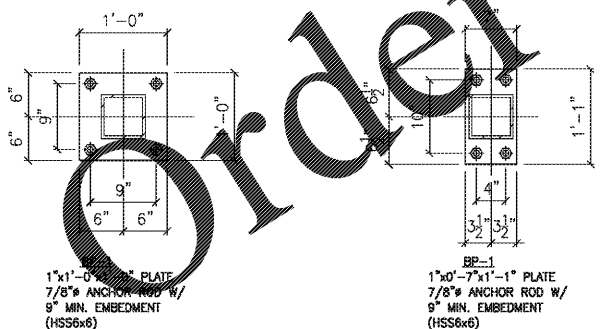
* USE CONCRETE BEAM ONLY



P-1
2'-0"x2'-0" CONC. PIER W/
8-#8 VERT. &
4-#4 TIES @ 3" O.C. &
#4 TIES @ 12" O.C. REMAINDER
T/PIER EL. SEE PLAN

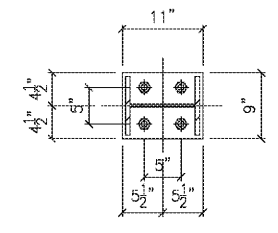


P-2
2'-7 1/2"x2'-0" CONC. PIER W/
10-#8 VERT. &
4-#4 TIES @ 3" O.C. &
#4 TIES @ 12" O.C. REMAINDER
T/PIER EL. SEE PLAN

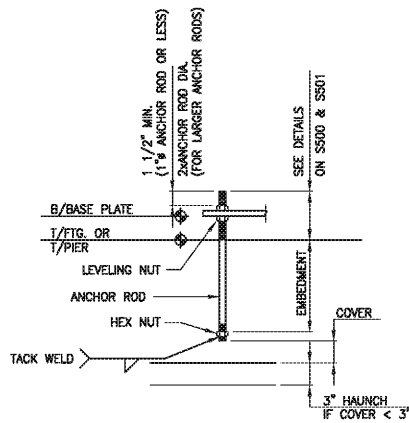


BP-1
1'x1'-0" PLATE
7/8" ANCHOR ROD W/
9" MIN. EMBEDMENT
(HSS6x6)

BP-2
1'x0'-7"x1'-1" PLATE
7/8" ANCHOR ROD W/
9" MIN. EMBEDMENT
(HSS6x6)



BP-3
1'x0'-7"x1'-1" PLATE
7/8" ANCHOR ROD W/
9" MIN. EMBEDMENT
(W10x45)



ANCHOR ROD DETAIL U.N.O.
SET ANCHORS TO ENSURE PROPER EMBEDMENT FROM TOP OF PIER OR FOOTING

BASE PLATE ANCHOR ROD HOLE

ANCHOR ROD DIA. (INCHES)	HOLE DIA. (INCHES)
3/4 TO 1	5/16 OVERSIZE
1 TO 2	1/2 OVERSIZE
2 AND OVER	1 OVERSIZE

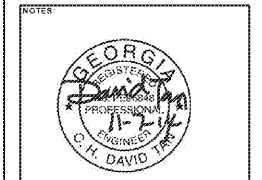
NOTE:
IF ANCHOR ROD HOLE DIAMETER IS SPECIFIED LARGER THAN SHOWN IN SCHEDULE, ANCHOR ROD PLATE WASHERS SHALL BE USED.

DESIGN BUILD
BLACK WATER CONSTRUCTION GROUP, LLC
2200 SATELLITE BLVD, DULUTH GA 30092
Phone: 404-740-7587

DESIGN CONSULTANTS
DESIGN SOLUTIONS LLC
www.designsolutions.com
Phone: 404-740-7587

ARCHITECT OF RECORD
ROBERT J LARA, AIA
8450 SW 291 ST
CUTLER BAY, FL 33189

STRUCTURAL & MEP
ENGQUEST
3550 ENGINEERING DRIVE, SUITE 175
PEACHTREE CORNERS, GA 30092
TEL: (678) 906-4670
www.engquest.com



REVISION # DATE REVISION

ISSUE DATE ISSUED TO ISSUED FOR:

10-22-2014	COUNTY	PERMITS
------------	--------	---------

PROJECT ADDRESS:
MASJID AL-MOMINEEN
837 NORTH INDIAN CREEK DRIVE
CLARKSTON, DEKALB COUNTY
GEORGIA, 30021

LAYOUT:
GENERAL DESIGN DETAILS

PAPER SIZE: 24X36 (ARCH D)
SCALE: AS NOTED

SHEET NUMBER:
S004