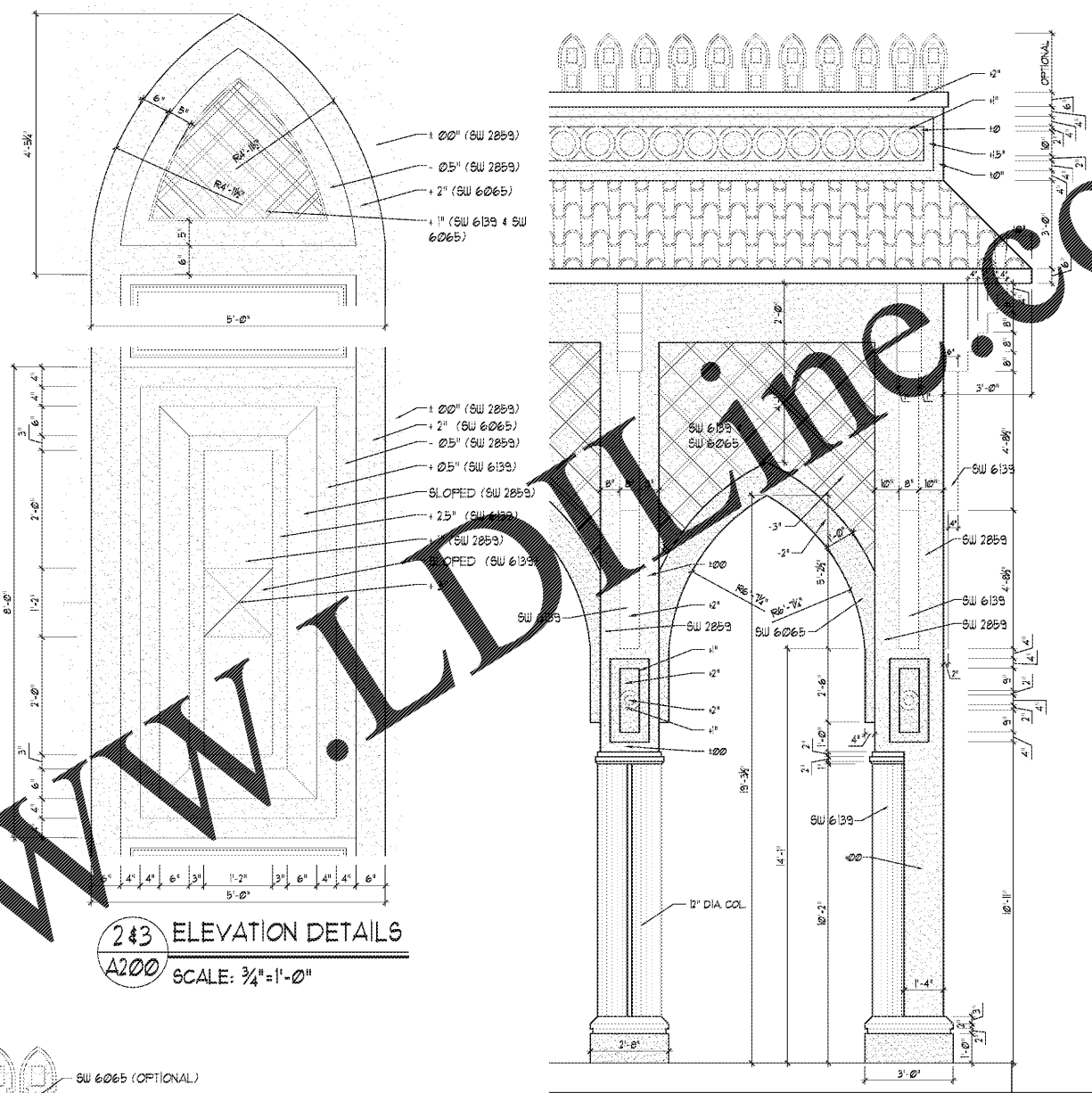


1 FRONT ELEVATION
 A200 SCALE: 1/8" = 1'-0"



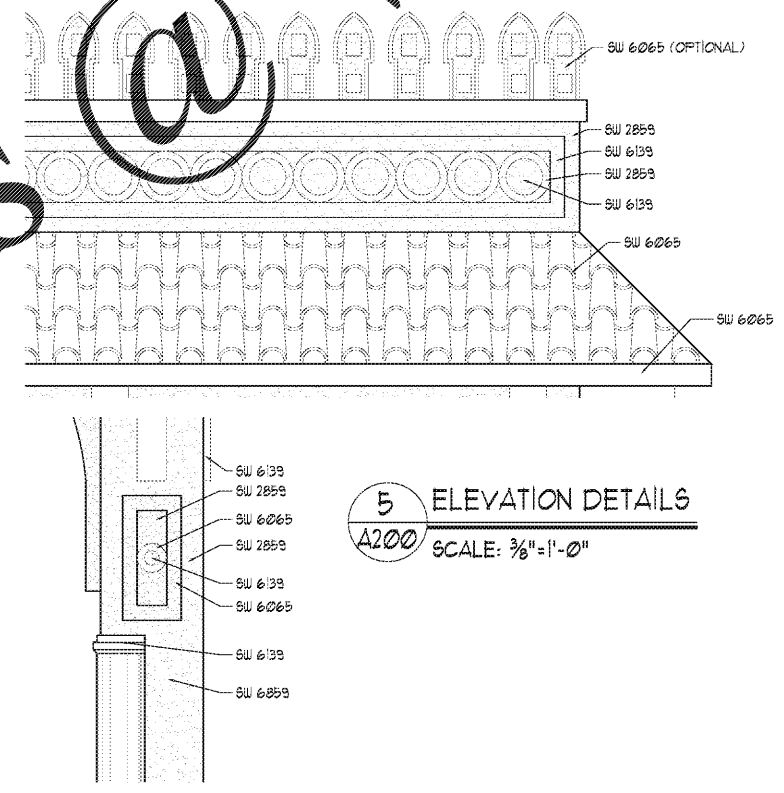
243 ELEVATION DETAILS
 A200 SCALE: 3/4" = 1'-0"

4 ELEVATION DETAIL
 A200 SCALE: 3/8" = 1'-0"

EXTERIOR MATERIALS AND FINISH LEGEND		
SYMBOL	DESCRIPTION	REMARKS
1	ARCHITECTURAL CONCRETE MASONRY UNITS	AS MANUF. BY "INTERHOUSE" MASONRY PRODUCTS, LLC. (OR APPROVED EQUAL) COLOR: SHERWIN WILLIAMS "1151" LIGHT BEIGE SW 6093
2	PRECAST CONCRETE SILL	PRECAST STONE SILL. SEE WALL SECTIONS FOR DETAILS. COLOR: SHERWIN WILLIAMS "900699" FERRY BROOK
3	E.F.F.S. EXTERIOR FINISH SYSTEM	AS MANUF. BY "PARREX" EXTERIOR INSULATION FINISH SYSTEM, E.F.F.S. (OR APPROVED EQUAL) COLOR: SEE ELEVATION DETAILS FOR COLOR SCHEME
4	E.F.F.S. EXTERIOR FINISH SYSTEM	AS MANUF. BY "PARREX" EXTERIOR INSULATION FINISH SYSTEM, E.F.F.S. (OR APPROVED EQUAL) COLOR: SEE ELEVATION DETAILS FOR COLOR SCHEME
5	E.F.F.S. EXTERIOR FINISH SYSTEM	AS MANUF. BY "PARREX" EXTERIOR INSULATION FINISH SYSTEM, E.F.F.S. (OR APPROVED EQUAL) COLOR: SEE ELEVATION DETAILS FOR COLOR SCHEME
6	COMMERCIAL INSULATED GLASS WINDOW SYSTEM	ALUMINUM COMMERCIAL WINDOW SYSTEM WITH LOW "E" DOUBLE PANE 1/2" TEMPERED GLASS WITH 1/2" GAP INSULATING GLASS. APPROVED MANUFACTURER: KAWNEER, KOLBE, TRACO
7	COMMERCIAL INSULATED STORE FRONT SYSTEM DOORS	ALUMINUM STORE FRONT SYSTEM WITH LOW "E" DOUBLE PANE 1/2" TEMPERED GLASS WITH 1/2" GAP INSULATING GLASS. APPROVED MANUFACTURER: KAWNEER, KOLBE, TRACO
8	STEEL RAINING SYSTEM	STEEL CABLE-HANG AISING TO BE PAINTED "MATTE BLACK" AS MANUFACTURED BY "KAWNEER" (OR APPROVED EQUAL)
9	STEEL RAINING SYSTEM	STEEL CABLE-HANG AISING TO BE PAINTED "MATTE BLACK" AS MANUFACTURED BY "KAWNEER" (OR APPROVED EQUAL)
10	E.F.F.S. FINISH SYSTEM ON MINARET.	E.F.F.S. FINISH SYSTEM ON MINARET. SEE STRUCTURAL DRAWINGS FOR FINISHES OF THE MINARET.
11	E.F.F.S. CORNICE	E.F.F.S. CORNICE ON FOAM PROFILE. SEE ENLARGED ELEVATION FOR DETAILS AND COLOR. AS MANUF. BY "PARREX" EXTERIOR INSULATION FINISH SYSTEM, E.F.F.S. (OR APPROVED EQUAL)
12	E.F.F.S. BAND	E.F.F.S. BAND ON FOAM PROFILE. SEE ENLARGED ELEVATION FOR DETAILS AND COLOR. AS MANUF. BY "PARREX" EXTERIOR INSULATION FINISH SYSTEM, E.F.F.S. (OR APPROVED EQUAL)
13	E.F.F.S. FINISH SYSTEM	AS MANUF. BY "PARREX" EXTERIOR INSULATION FINISH SYSTEM, E.F.F.S. (OR APPROVED EQUAL) COLOR: SEE ELEVATION PROFILE TO IDENTIFY COLOR OF THE TILES
14	E.F.F.S. FINISH SYSTEM BRACKET	E.F.F.S. FINISH SYSTEM BRACKET. SEE ENLARGED ELEVATION FOR DETAILS AND COLOR. PROVIDE 1/2" GAGE BRACKET AS REQUIRED TO FORM THE BRACKET. COLOR: SHERWIN WILLIAMS "900699" HARVEST GOLD
15	E.F.F.S. FINISH SYSTEM ON FOAM PROFILE	E.F.F.S. FINISH SYSTEM ON FOAM PROFILE. SEE ENLARGED ELEVATION FOR DETAILS AND COLOR. AS MANUF. BY "PARREX" EXTERIOR INSULATION FINISH SYSTEM, E.F.F.S. (OR APPROVED EQUAL)
16	E.F.F.S. OR STUCCO PORTS (OPTIONAL)	E.F.F.S. OR STUCCO PORTS. SEE ENLARGED ELEVATION FOR DETAILS AND COLOR. COLOR: SHERWIN WILLIAMS "900699" FERRY BROOK
17	STUCCO TRIMS	STUCCO TRIMS. SEE ENLARGED ELEVATIONS FOR PROFILES AND COLOR.
18	RELIGIOUS SPIRE	RELIGIOUS SPIRE AS APPROVED BY OWNER, NON-STRUCTURAL

19	RELIGIOUS SPIRE	RELIGIOUS SPIRE AS APPROVED BY OWNER, NON-STRUCTURAL
20	INSULATED METAL DOOR	HOLLOW METAL INSULATED DOOR ON THE EXTERIOR
21	METAL COPING	GALV. METAL COPING. SEE COLOR IN ELEVATIONS. (TYP.) FRONT ATTACH TO CONTINUOUS HOLD DOWN CLIP. REAR W/ NAILS GROMMET W/ NEOPRENE WASHERS #10" ON CENTER. COLOR: SHERWIN WILLIAMS "900699" FERRY BROOK
22	METAL RAILING	METAL RAILING ON CONCRETE RETAINING WALL PER SITE CONDITIONS. PROVIDE RAILING AND GUARD RAIL PER CODE. GUARD RAIL HEIGHT: 42"
23	REVEAL IN E.F.F.S.	HORIZONTAL AND VERTICAL REVEALS IN E.F.F.S. SEE MANUFACTURER'S DETAILS AND SPECIFICATIONS
24	EXPANSION JOINT IN E.F.F.S.	HORIZONTAL AND VERTICAL EXPANSION JOINTS IN E.F.F.S. SEE MANUFACTURER'S DETAILS AND SPECIFICATIONS. PROVIDE VERTICAL JOINTS AS SHOWN IN SECTION. PROVIDE HORIZONTAL JOINTS AS SHOWN IN SECTION. RECOMMENDATIONS BY CONSULTANT.
25	RAIN WATER PIPE	RAIN WATER PIPE. SECURE TO MATCH EXISTING SURFACE.
26	EMERGENCY SCUPPER	EMERGENCY SCUPPER. MINIMUM HEIGHT AND 2" HIGHER THAN THE EXISTING SCUPPER.

NOTES:
 1. APPROVED E.F.F.S. BY PARREX. STANDARD WATER PROOFING OR FLASHING.
 2. PRE-FABRICATED CORNICE AS APPROVED BY OWNER. SUGGESTION ON DOPE COLOR: SHERWIN WILLIAMS "900699" BEIGE. DOPE IS TO BE PROVIDED BY MANUFACTURER. BRACKETING DESIGN PROVIDED IN THESE DRAWINGS ARE BASED ON THE WEIGHT OF THE COPES PROVIDED BY THE CONTRACTOR AND OWNERS TO THE DESIGN CONSULTANT.
 3. OWNER TO APPROVE COLOR FOR FINAL INSTALLATION AND PAINTING.



5 ELEVATION DETAILS
 A200 SCALE: 3/8" = 1'-0"

GENERAL NOTES - ELEVATION

- REFER TO ALL OTHER SHEETS FOR ADDITIONAL NOTES AND INFORMATION.
- THE CONTRACTOR SHALL NOTIFY THE DESIGN CONSULTANT, ARCHITECT AND ENGINEERS FOR INSTRUCTIONS / CLARIFICATIONS PRIOR TO CONSTRUCTION.
- CONTRACTOR IS TO VERIFY ALL DIMENSIONS AND EXISTING CONDITIONS AT THE JOB SITE. DESIGN CONSULTANTS AND ARCHITECTS ARE TO BE NOTIFIED IN WRITING OF ANY DISCREPANCIES.
- ALL WORK SHALL COMPLY TO THE INTERNATIONAL BUILDING CODE AND ALL ADOPTED SUB-CODES. DESIGN CONSULTANT AND ARCHITECTS ARE NOT RETAINED FOR ANY ON SITE SUPERVISION OR CONTRACT ADMINISTRATION. ALL WORK IS TO BE PERFORMED TO THE HIGHEST STANDARDS OF THE TRADES.
- CONTRACTOR IS TO COMPLY TO ALL STATE AND LOCAL ORDINANCES.
- IT SHALL BE THE RESPONSIBILITY OF THE GENERAL CONTRACTOR TO COORDINATE ALL WORK WITH THE STRUCTURAL, MECHANICAL, ELECTRICAL AND OTHER CONSULTANTS. THE GENERAL CONTRACTOR TO SUBMIT A NEW LAYOUT IF IT BECOMES NECESSARY FOR APPROVAL.
- SUPPORT ALL WORK AS NEW WORK PROGRESSSES.
- THE CONTRACTOR SHALL FAMILIARIZE HIMSELF WITH ALL EXISTING CONDITIONS AT THE JOB SITE PRIOR TO THE START OF ANY WORK.
- CONTRACTOR IS TO PROVIDE ACCESS PANELS AS REQUIRED NEEDED OR DIRECTED BY ARCHITECT, ENGINEER, CONSTRUCTION OFFICIAL OR OWNER.
- CONTRACTOR AND/OR OWNER SHALL PROVIDE FOR THE SAFETY OF ALL JOB RELATED PERSONNEL AS WELL AS THE GENERAL PUBLIC. CONTRACTOR SHALL PROVIDE A FULL SCALE MOCKUP WALL WITH MATERIAL AND COLORS AS SPECIFIED IN THE DRAWINGS FOR THE APPROVAL OF OWNER, DESIGN CONSULTANT AND THE ARCHITECT, BEFORE FINALIZING THE INSTALLATION OF SAID MATERIAL TO BUILDING.

DESIGN BUILD
 BLACKWATER CONSTRUCTION GROUP, LLC
 2200 SATELLITE BLVD, DULUTH GA 30092
 770-455-5569

DESIGN CONSULTANTS
 DESIGN SOLUTIONS LLC
 1150 S. GOSWORTHY BLVD, SUITE 115
 ATLANTA, GA 30329
 Phone: 404-740-7389

ARCHITECT OF RECORD
 ROBERT J LARA, AIA
 8450 SW 291 ST
 CUTLER BAY, FL 33189

STATE OF GEORGIA
 ROBERT JERRY LARA
 REGISTERED ARCHITECT
 Nov 9 2014

STRUCTURAL
 ENGQUEST
 3550 ENGINEERING DRIVE, SUITE 175
 PEACHTREE CORNERS, GA 30092
 TEL: (404) 966-4670
 www.engquest.com

MEP
 ENGQUEST
 3550 ENGINEERING DRIVE, SUITE 175
 PEACHTREE CORNERS, GA 30092
 TEL: (404) 966-4670
 www.engquest.com

NOTES:

REVISION #	DATE	REMARKS

ISSUE DATE	ISSUED TO:	ISSUED FOR:
10-02-2014	COUNTY	PERMITS

PROJECT ADDRESS:
MASJID AL-MOMINEEN
 837 NORTH INDIAN CREEK DRIVE
 CLARKSBURG, DEKALB COUNTY
 GEORGIA, 30021

LAYOUT:
FRONT ELEVATION

PAPER SIZE: 24X36 (ARCH D)
 SCALE: AS NOTED

SHEET NUMBER:
A200