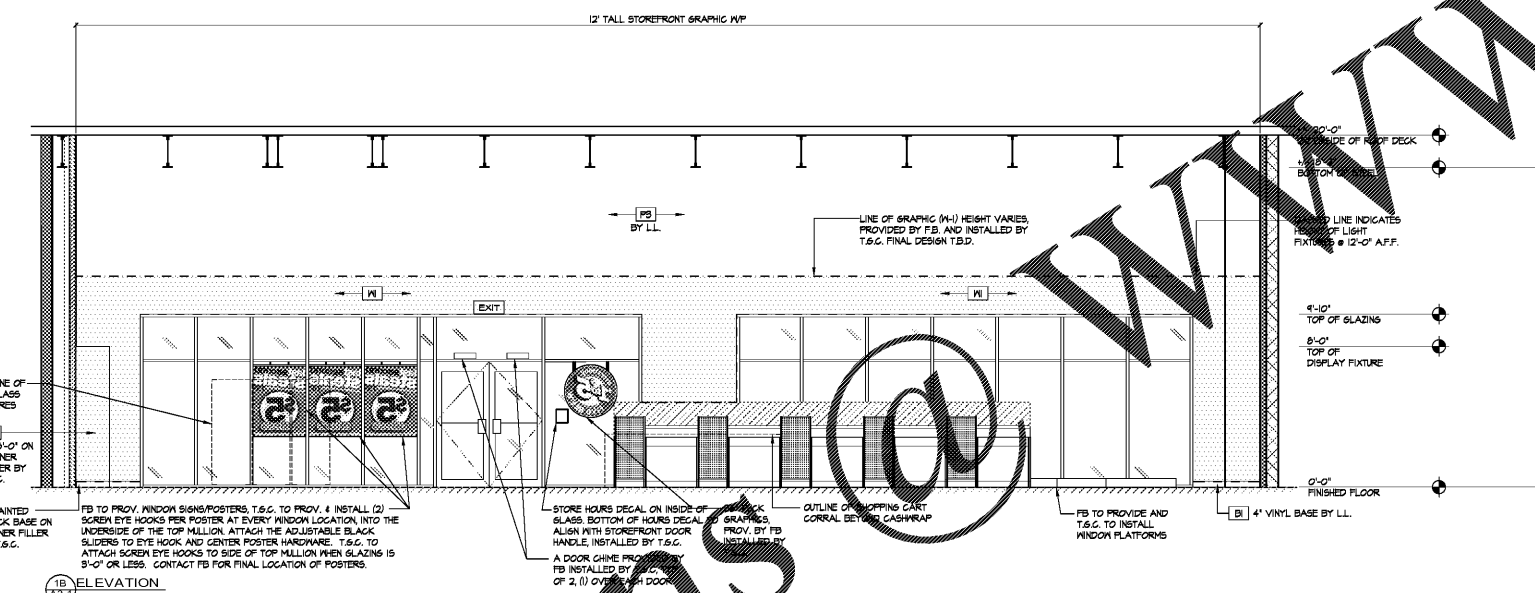


1A ELEVATION



1B ELEVATION

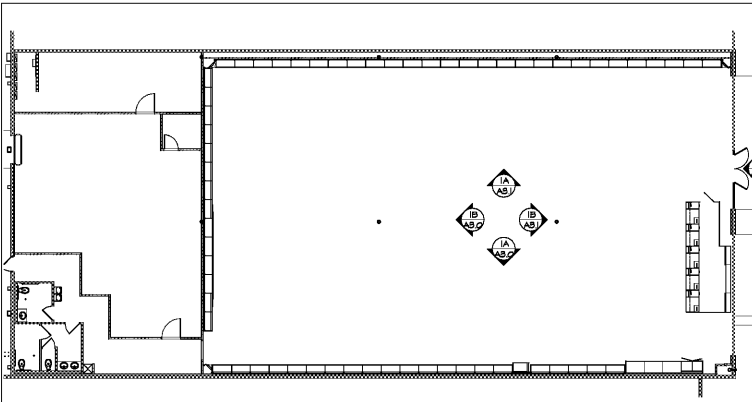
- NOTE:**
1. WALLPAPER IS PROVIDED BY FIVE BELOW & INSTALLED BY T&G.
 2. DO NOT CUT WALLPAPER UNLESS SPECIFICALLY NOTED.
 3. SEE GRAPHICS SIGN SCHEDULE ON SHEET P1.0.
 4. ALL INTERIOR FINISHES SHALL BE CLASS 'A' PER NFPA 255 PLANE SPREAD RATINGS OF 25 OR LESS WITH MAX. SMOKE GENERATION FACTOR OF 450.
 5. T&G TO SUPPLY AND INSTALL BATTERIES FOR SECURITY CAMERAS.
- NOTE:**
- ALL WALLS BEHIND SALES AREA SHELVING NEED NOT BE PAINTED. PAINT THESE WALLS FROM T-10' & UP (I/O/N).
- NOTE TO GRAPHIC VENDOR:**
- VENDOR TO SUPPLY STORE WITH SMALLER SIZED WORDS AS PREVIOUSLY ALLOCATED. CONTACT FB CPM FOR CLARIFICATION IF NEEDED.
- WALLPAPER NOTE:**
- T&G TO REFER TO VENDOR PROVIDED WALLPAPER LAYOUT INCLUDED WITH THE WALLPAPER MATERIAL PRIOR TO INSTALLATION.

INTERIOR ELEVATIONS

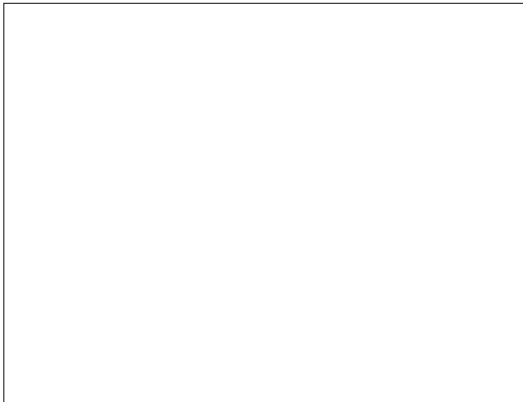
FINISH	DESCRIPTION / LOCATION	MANUFACTURER	SPECIFICATION / FINISH	COLOR #	FINISH	DESCRIPTION / LOCATION	MANUFACTURER	SPECIFICATION / FINISH	COLOR #
F1	POLISHED CONCRETE OVER EXIST. SLAB. SEE FINISH NOTES FOR SCOPE.	QUESTMARK CONG. POLISHING SYSTEM			F4	RED (NON)	SHERWIN WILLIAMS PROMAR 200 ZERO VOC	SATIN	SW-425C *
F2	12" X 12" X 1/8" VGT	ARMSTRONG	FLUOROPOLYMER S-500 ADHESIVE	SW-127	F5	GREEN (SPORTS)	SHERWIN WILLIAMS PROMAR 200 ZERO VOC	SATIN	SW-363C *
F3	POLISHED CONCRETE	QUESTMARK CONG. POLISHING SYSTEM			F6	YELLOW (CRAFTS)	SHERWIN WILLIAMS PROMAR 200 ZERO VOC	SATIN	SW-130C *
F4	FATIGUE MAT AT CASH WRAP	PROVIDED BY TENANT			F7	LIGHT BLUE (ROOM)	SHERWIN WILLIAMS PROMAR 200 ZERO VOC	SATIN	SW-2126C *
F5	SHEET VINYL	ARMSTRONG	WHITE GLIFPS S-543 ADHESIVE	88702	F8	PURPLE (TECH)	SHERWIN WILLIAMS PROMAR 200 ZERO VOC	SATIN	SW-266C *
F6	12"x12" 5/16" CERAMIC FLOOR TILE 1/4" GROUT LINES	DALTILE MAPEL 200	DT-VANILLA M-ALABASTER	GH25 (I) MAPEL-01	F9	MAGENTA (STYLE)	SHERWIN WILLIAMS PROMAR 200 ZERO VOC	SATIN	SW-246C *
B1	4" VINYL BASE	ARMSTRONG	#60 JET BLACK		F10	ORANGE (CANDY)	SHERWIN WILLIAMS PROMAR 200 ZERO VOC	SATIN	SW-1505C *
F7	CEILING DECK OPENED JOISTS REMOVE NO HANG CEILING	SHERWIN WILLIAMS PROMAR 200 ZERO VOC	SEMIGLOSS	SW-1005	F11	LIGHT GREEN (PARTY)	SHERWIN WILLIAMS PROMAR 200 ZERO VOC	SATIN	SW-390C *
F8	WALL FINISH	SHERWIN WILLIAMS PROMAR 200 ZERO VOC	FLAT	SW-1005	F12	WALLPAPER	TBD	CUSTOM	
F9	PURE WHITE	SHERWIN WILLIAMS PROMAR 200 ZERO VOC	SEMIGLOSS	SW-1005	F13	INTERIOR STOREFRONT WALL TILE FIVE BELOW BLUE TILE	REVIGRES PORCELANATO 12"x12" (30cm x30cm) TILE	SEMIGLOSS	CHROMATICA CABALTO
F10	PURE WHITE	SHERWIN WILLIAMS PROMAR 200 ZERO VOC	EGG SHELL	SW-1005					

NOTE: FOR ALL INTERIOR CORNER FILLER PAINT, PLEASE COORDINATE W/ A/G, FINISH PLAN.

INTERIOR FINISH RATING: ALL INTERIOR FINISHES SHALL BE CLASS 'A' PER NFPA 255-PLANE SPREAD RATINGS OF 25 OR LESS WITH MAXIMUM SMOKE GENERATION FACTOR OF 450.



B KEY PLAN



C OPEN

A PAINT FINISH LEGEND / NOTES

CONSULTANTS

ARCHITECTURAL SEAL

DATE ISSUE

DATE	REVISION	NAME
04/18/17	RE-REVIEW	TMG
04/07/17	PERMIT / OWNER	

PROJECT NAME / LOCATION

five BELOW
 FAYETTEVILLE PAVILION
 110 PAVILION PARKWAY, SPACE 110A
 FAYETTEVILLE, GA 30214

PROJECT INFORMATION
 DATE: APRIL 07, 2017
 PROJECT NO.: 170238
 DELIVERY TYPE: V-BOX

DRAWN: TMG
 CHECKED: GSW

INTERIOR ELEVATIONS

A3.1