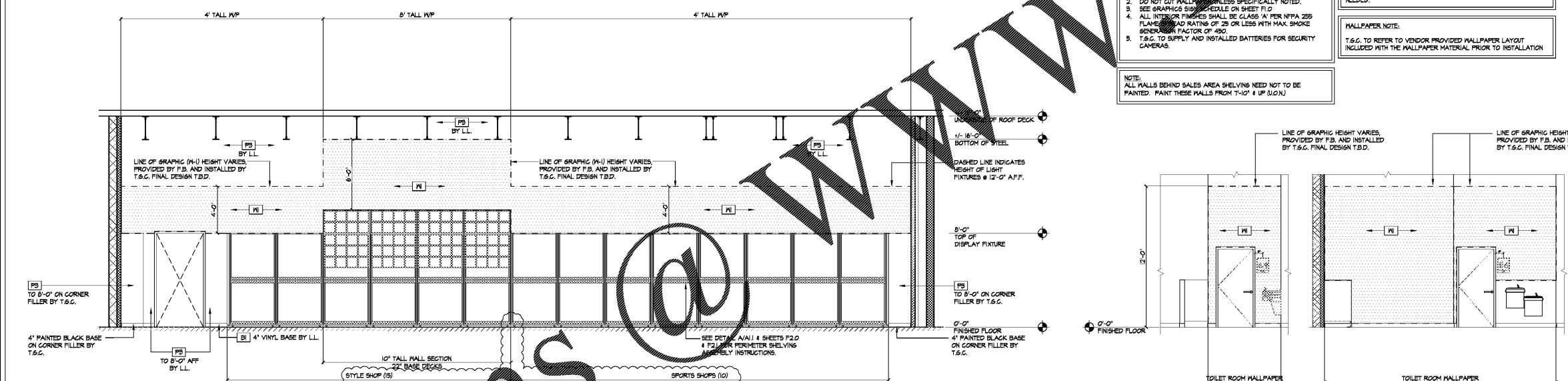


1A ELEVATION  
 (A3.0)



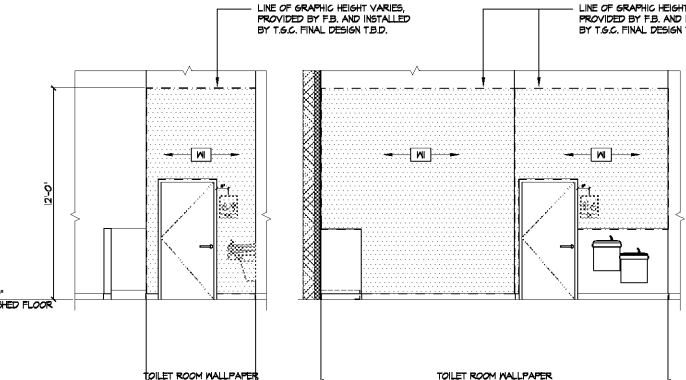
1B ELEVATION  
 (A3.0)

**NOTE:**  
 1. WALLPAPER IS PROVIDED BY FIVE BELOW & INSTALLED BY T.S.C.  
 2. DO NOT CUT WALLPAPER UNLESS SPECIFICALLY NOTED.  
 3. SEE GRAPHICS SIGN SCHEDULE ON SHEET F1.0  
 4. ALL INTERIOR FINISHES SHALL BE CLASS 'A' PER NFPA 285 FLAME SPREAD RATINGS OF 25 OR LESS WITH MAX SMOKE GENERATION FACTOR OF 450.  
 5. T.S.C. TO SUPPLY AND INSTALL BATTERIES FOR SECURITY CAMERAS.

**NOTE TO GRAPHIC VENDOR:**  
 VENDOR TO SUPPLY STORE WITH SMALLER SIZED WORDS AS PREVIOUSLY ALLOCATED. CONTACT FB GPM FOR CLARIFICATION IF NEEDED.

**WALLPAPER NOTE:**  
 T.S.C. TO REFER TO VENDOR PROVIDED WALLPAPER LAYOUT INCLUDED WITH THE WALLPAPER MATERIAL PRIOR TO INSTALLATION.

**NOTE:**  
 ALL HALLS BEHIND SALES AREA SHELVING NEED NOT BE PAINTED. PAINT THESE WALLS FROM 7'-0" & UP (8.0.A)



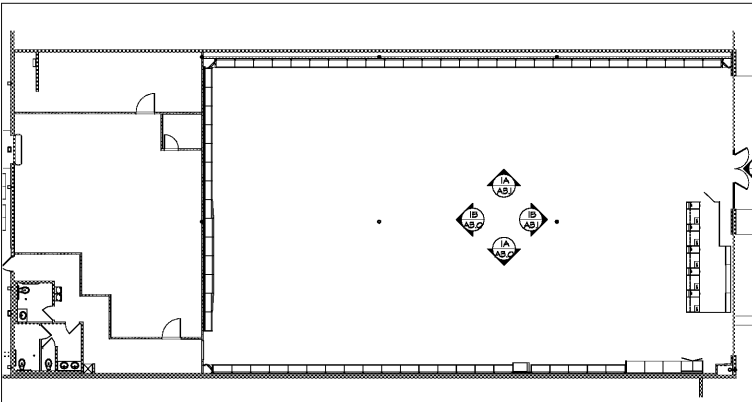
1C ELEVATION  
 (A3.0)

**I INTERIOR ELEVATIONS**

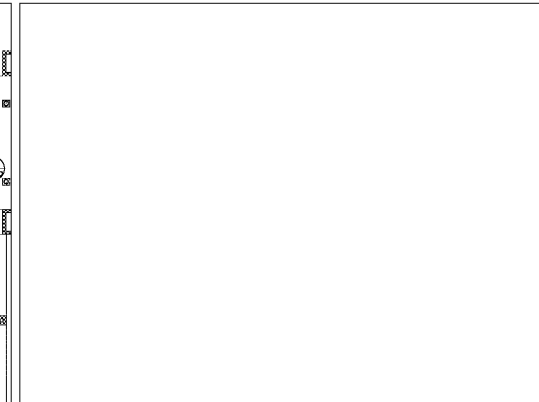
| FINISH | DESCRIPTION / LOCATION  | MANUFACTURER                         | SPECIFICATION / FINISH      | COLOR #            | FINISH | DESCRIPTION / LOCATION                             | MANUFACTURER                                   | SPECIFICATION / FINISH | COLOR #           |
|--------|---|--------------------------------------|-----------------------------|--------------------|--------|--|--|------------------------|-------------------|
| F1     | POLISHED CONCRETE OVER EXIST. SLAB. SEE FINISH NOTES FOR SCOPE. | QUESTMARK CONG. POLISHING SYSTEM     |                             |                    | F4     | RED (NOW)  | SHERWIN WILLIAMS PROMAR 200 ZERO VOC           | SATIN                  | SW-425C *         |
| F2     | 12" X 12" X 1/8" VGT  | ARMSTRONGS                           | 12" X 12" X 1/8" VGT        | 51427              | F5     | GREEN (SPORTS)                                     | SHERWIN WILLIAMS PROMAR 200 ZERO VOC           | SATIN                  | SW-269C *         |
| F3     | POLISHED CONCRETE   | QUESTMARK CONG. POLISHING SYSTEM     |                             |                    | F6     | YELLOW (CRAFTS)                                    | SHERWIN WILLIAMS PROMAR 200 ZERO VOC           | SATIN                  | SW-180C *         |
| F4     | FATIGUE MAT AT CASH WRAP  | PROVIDED BY TENANT                   |                             |                    | F7     | LIGHT BLUE (ROOM)                                  | SHERWIN WILLIAMS PROMAR 200 ZERO VOC           | SATIN                  | SW-2726C *        |
| F5     | SHEET VINYL   | ARMSTRONGS                           | WHITE GLIFFS 5-543 ADHESIVE | 89102              | F8     | PURPLE (TECH)                                      | SHERWIN WILLIAMS PROMAR 200 ZERO VOC           | SATIN                  | SW-266C *         |
| F6     | 12"x12" x 5/16" CERAMIC FLOOR TILE 1/4" SPLIT LINES             | DALTILE MAPEI (20)                   | 17-VANILLA M-A-LABASTER     | GR25 (1) MAPEI-(1) | F9     | MAGENTA (STYLE)                                    | SHERWIN WILLIAMS PROMAR 200 ZERO VOC           | SATIN                  | SW-246C *         |
| F7     | 4" VINYL BASE   | ARMSTRONGS                           | #60 JET BLACK               |                    | F10    | ORANGE (GANDY)                                     | SHERWIN WILLIAMS PROMAR 200 ZERO VOC           | SATIN                  | SW-1805C *        |
| F8     | CEILING DECK OPEN TO JOISTS (RYTVE NO HANG CEILING)             | SHERWIN WILLIAMS PROMAR 200 ZERO VOC | FLAT                        | SW-1005            | F11    | LIGHT GREEN (PARTY)                                | SHERWIN WILLIAMS PROMAR 200 ZERO VOC           | SATIN                  | SW-940C *         |
| F9     | GYM CEILING   | SHERWIN WILLIAMS PROMAR 200 ZERO VOC | SEMI-GLOSS                  | SW-1005            | F12    | WALLPAPER  | TBD  | CUSTOM                 |                   |
| F10    | PAINT (WALL)  | SHERWIN WILLIAMS PROMAR 200 ZERO VOC | FLAT                        | SW-1005            | F13    | INTERIOR STOREFRONT WALL TILE FIVE BELOW BLUE TILE | REVIGRES PORCELANATO 12"x12" (30cm x30cm) TILE | SEMI-GLOSS             | CROMATICA CABALTO |
| F11    | PAINT (WHITE)   | SHERWIN WILLIAMS PROMAR 200 ZERO VOC | SEMI-GLOSS                  | SW-1005            |        |  |  |                        |                   |
| F12    | PAINT (WHITE)   | SHERWIN WILLIAMS PROMAR 200 ZERO VOC | SEMI-GLOSS                  | SW-1005            |        |  |  |                        |                   |
| F13    | PAINT (WHITE)   | SHERWIN WILLIAMS PROMAR 200 ZERO VOC | EGG SHELL                   | SW-1005            |        |  |  |                        |                   |

**NOTE:** FOR ALL INTERIOR CORNER FILLER PAINT, PLEASE COORDINATE W/ A/G, FINISH PLAN.

**INTERIOR FINISH RATINGS**  
 ALL INTERIOR FINISHES SHALL BE CLASS 'A' PER NFPA 285-FLAME SPREAD RATINGS OF 25 OR LESS WITH MAXIMUM SMOKE GENERATION FACTOR OF 450.



B KEY PLAN



C OPEN

A PAINT FINISH LEGEND / NOTES

**five BELOW**  
 FAYETTEVILLE PAVILION  
 110 PAVILION PARKWAY, SPACE 110A  
 FAYETTEVILLE, GA 30214

**PROJECT INFORMATION**  
 DATE: APRIL 07, 2017  
 PROJECT NO.: 170238  
 DELIVERY TYPE: V-BOX

**DRAWN:** TMG  
**CHECKED:** GSW  
**SHEET TITLE / NUMBER**

**INTERIOR ELEVATIONS**  
**A3.0**

Order Plans @ WWW.FJG.COM

WWW.FJG.COM

CONSULTANTS

ARCHITECTURAL SEAL

DATE ISSUE

|          |                |      |
|----------|----------------|------|
| DATE     | REVISION       | NAME |
| 24/12/17 | RE-REVIEW      | TMG  |
| 24/07/17 | PERMIT / OWNER |      |

PROJECT NAME / LOCATION