

UTILITY NOTES

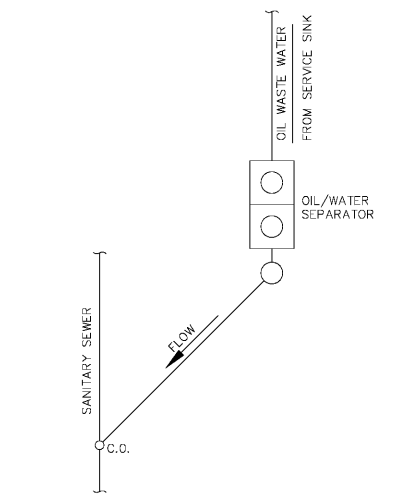
1. ALL WATER AND SANITARY SEWER CONSTRUCTION SHALL BE IN ACCORDANCE WITH THE CURRENT AUGUSTA RICHMOND COUNTY WATER UTILITY CONSTRUCTION STANDARDS AND SPECIFICATIONS.
2. ALL EXISTING WATER SERVICE LINES AND APPURTENANCES TO BE REMOVED. ANY EXISTING WATER METER NOT TO BE RE-USED MUST BE RETURNED TO AUGUSTA UTILITIES DEPARTMENT.
3. CONTRACTOR SHALL CONTACT THE UTILITIES PROTECTION "CALL BEFORE YOU DIG" SERVICE IN ORDER TO LOCATE UTILITIES PRIOR TO STARTING ANY EXCAVATION OR CONSTRUCTION.
4. CONTRACTOR IS RESPONSIBLE FOR CONTACTING THE AUGUSTA RICHMOND COUNTY WATER UTILITY MAINTENANCE OFFICE TO REQUEST LOCATES FOR ALL UNDERGROUND SANITARY SEWER FACILITIES. THE CONTACT NUMBER IS 706-821-1851.
5. CONTRACTOR IS RESPONSIBLE FOR MAKING ALL WATER/SEWER SERVICE TAPS DURING CONSTRUCTION OR ADDED FOR THE DEVELOPMENT. CONTRACTOR IS RESPONSIBLE FOR REMOVAL OF EXISTING SERVICE TAPS NOT TO BE USED FOR THE DEVELOPMENT OR UPGRADES REQUIRED FOR THE EXISTING WATER OR SEWER SERVICES THAT WILL BE USED FOR THE PROPOSED DEVELOPMENT.
6. ALL WATER LINES SHALL BE C900 PVC CL. 200, UNLESS OTHERWISE SHOWN.
7. ALL WATER LINES ARE TO BE TESTED, DISINFECTED AND CLEANED FOR BACTERIA.
8. AN ELECTRONIC COPY OF THE AS-BUILT OF THIS PROJECT WILL BE PROVIDED TO THE AUGUSTA ENGINEERING DEPARTMENT PRIOR TO ANY C.O. BEING ISSUED.
9. FOR BACKFLOW INSTALLATIONS FOR NON-RESIDENTIAL DEVELOPMENT, A MINIMUM "DOUBLE CHECK" BACKFLOW DEVICE SHALL BE INSTALLED ON THE CUSTOMER'S SIDE OF ALL SERVICE LINES (DOMESTIC, INDUSTRIAL AND FIRE).
10. ALL TIES TO EXISTING MANHOLES SHALL BE CORROSION RESISTANT MANHOLES REQUIRE "K" SEAL OR "G" RUBBER BOOTS.
11. PROVIDE ONE (1) DRAIN DROP ABOVE ALL SANITARY SEWER MANHOLES.
12. SANITARY SEWER LINES SHALL BE 12" PVC PIPE OR D.I.P. AND SHALL BE 12" GA. WIRE SINGLE AND WIRE ATTACHED ALONG THE TOP OF THE UNLESS OTHERWISE NOTED.
13. A MINIMUM 20' UTILITY EASEMENT CENTERED OVER ALL WATER LINES AND A MINIMUM 20' UTILITY EASEMENT CENTERED OVER ALL SANITARY SEWER LINES SHALL BE USED TO AUGUSTA RICHMOND COUNTY AT COMPLETION AND ACCEPTANCE OF SAID LINES.
14. CONTRACTOR SHALL VERIFY EXISTING UTILITY LOCATIONS AND NOTIFY THE DESIGN ENGINEER IF A CONFLICT ARISES.

UTILITY NOTES

1. FOR GENERAL NOTES SEE DRAWING C-102.
2. CONNECTION TO THE EXISTING SANITARY SEWER MANHOLE FOR SERVICE LINE SHALL BE MADE BY CORING, NO HAMMERING, JACK HAMMERING, OR CHIPPING WILL BE ALLOWED. AN INSPECTOR SHALL BE PRESENT AT THE TIME OF THE TIE IN.
3. DUMPSTER SCREEN TO BE CONSTRUCTED OF THE SAME MATERIALS AS THE EXTERIOR ELEVATION OF THE PRINCIPLE STRUCTURE.
4. PROVIDE A MINIMUM TEN FOOT WIDE LANDSCAPE STRIP BETWEEN RIGHT OF WAY AND FRONT OF PRINCIPAL STRUCTURE.

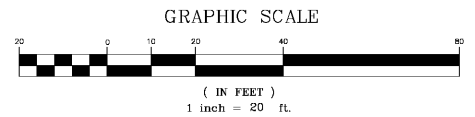
NOTE:
ALL EXISTING WATER SERVICE LINES AND APPURTENANCES TO BE REMOVED. ANY EXISTING WATER METER NOT TO BE RE-USED MUST BE RETURNED TO AUGUSTA UTILITIES DEPARTMENT.

NOTE:
AN ELECTRONIC COPY OF THE AS-BUILT OF THIS PROJECT WILL BE PROVIDED TO THE AUGUSTA ENGINEERING DEPARTMENT PRIOR TO ANY C.O. BEING ISSUED.



OIL/WATER SEPARATOR DETAIL
SCALE: NTS

- NOTES:**
1. NO FLOOR DRAINS ARE PRESENT WITHIN THE FACILITY.
 2. SERVICE SINK EFFLUENT TO FLOW THROUGH AN ADJACENT OIL/WATER SEPARATOR PRIOR TO TYING INTO SANITARY SEWER LINE.



MOORE AND ASSOCIATES ENGINEERING AND CONSULTING, INC.
1009 East Avenue, Suite 208A1
North Augusta, SC 29841
(803) 219-2789 / FAX (803) 219-3848
www.moore-inc.com



EXPRESS OIL CHANGE BUILDING
4342 WASHINGTON RD, EVANS GA 30809

UTILITY PLAN

SHEET NO.

C-104

TATE DESIGN GROUP
SITE DESIGN ENGINEERS

1821Curtis Drive, North Augusta SC 29841
803.226.7979 Fax 803.310.6044
tatedesigngroup@gmail.com

BEFORE YOU DIG
CALL THE CALL NUMBER
1-800-4-A-DIG
THE PRESENCE, SIZE, AND LOCATION OF THE EXISTING UNDERGROUND UTILITIES SHOWN ON THIS PLAN ARE BASED UPON INFORMATION OBTAINED FROM PREVIOUS CONSTRUCTION PLANS AND VISIBLE ABOVE GROUND STRUCTURES. THE ACTUAL LOCATION, SIZE, AND TYPE OF MATERIAL MAY VARY UPON EXCAVATION. THERE MAY BE OTHER EXISTING UTILITIES ON THIS SITE NOT SHOWN ON THIS PLAN. THE CONTRACTOR IS RESPONSIBLE FOR LOCATING ALL EXISTING UTILITIES PRIOR TO ANY DEMOLITION, EXCAVATION, AND/OR CONSTRUCTION. THE CONTRACTOR IS ADVISED TO CONTACT THE LOCAL UNDERGROUND UTILITY SERVICE PRIOR TO ANY DEMOLITION, EXCAVATION, AND/OR CONSTRUCTION.

UTILITY LAYOUT PLAN
SCALE: 1" = 20'

Order Plans @ www.ldm.com