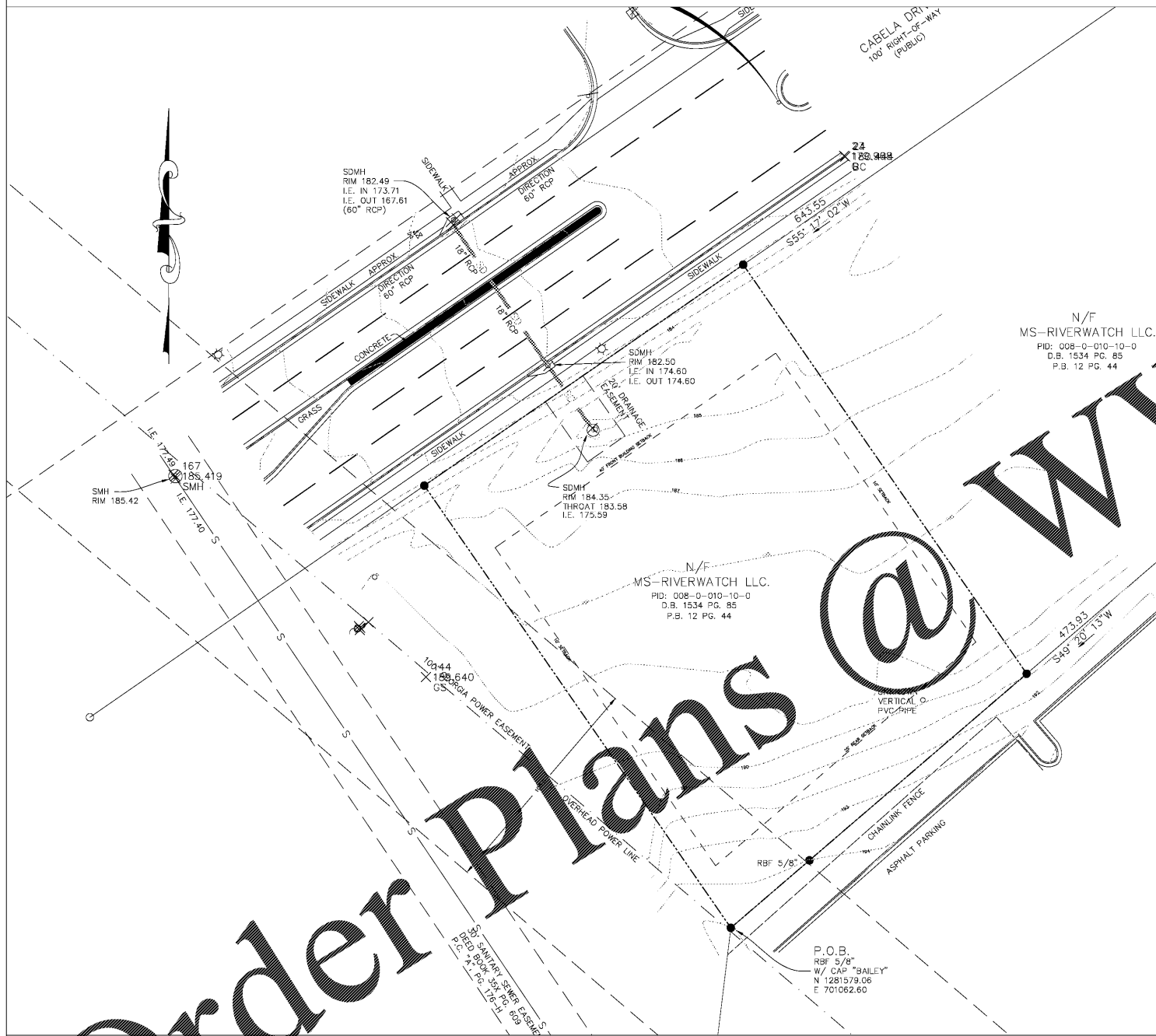


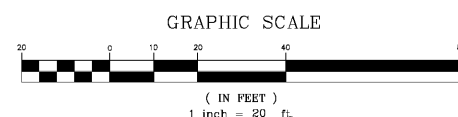
# EXPRESS OIL CHANGE BUILDING

## 837 CABELA DRIVE, AUGUSTA GA 30909

### M & A PROJECT NO. 16213C



**EXISTING CONDITIONS PLAN**  
SCALE: 1" = 30'



#### INDEX OF DRAWINGS:

- C-101 COVER SHEET AND EXISTING CONDITIONS
- C-102 SITE DIMENSIONAL LAYOUT PLAN
- C-103 GRADING, EROSION CONTROL AND LANDSCAPE PLAN
- C-104 UTILITY PLAN
- C-501 MISCELLANEOUS DETAILS

PROJECT DATA	
PROJECT NAME	EXPRESS OIL CHANGE, LLC
PROJECT ADDRESS	837 CABELA DRIVE AUGUSTA, GA 30909
TAX PARCEL NO.	072A117A
ZONING	LI (LIGHT INDUSTRIAL)
PROPOSED USE	OIL CHANGE SERVICE
TOTAL PROJECT ACREAGE	0.33 AC
PARKING REQUIRED	12 (MIN.) / 24 (MAX.) SPACES
PARKING PROVIDED	24 SPACES
DISTURBED AREA	0.33 AC
PREVIOUS AREA	0.29 AC
OPEN SPACE	0.08 AC (22%)

#### PARKING CALCULATIONS:

MINIMUM PARKING = 3 SPACES PER RACK = 3 x 8 RACKS = 24 SPACES  
 MAXIMUM PARKING = 4 SPACES PER RACK = 4 x 8 RACKS = 32 SPACES  
 TOTAL PARKING SPACES PROVIDED = 24 SPACES

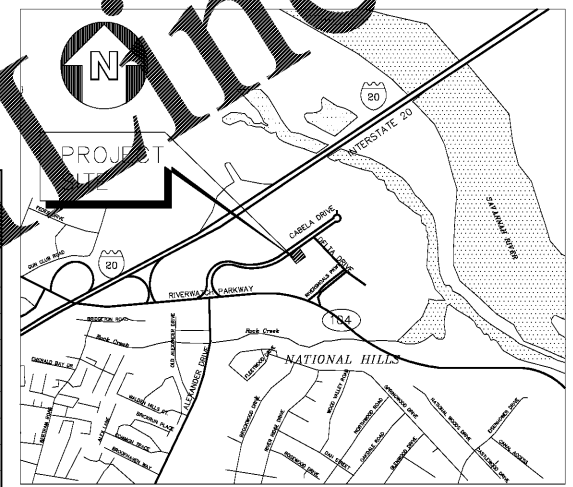
#### DRAWING LEGEND

EXISTING	PROPOSED
R/W	PROPERTY LINE OR R/W
#4 R.B. O	PROPERTY CORNER
B.M.	BENCHMARK
I.E.	INVERT ELEVATION
270	1' INTERVAL CONTOUR
W	WATER MAIN
P	POWER POLE
	270
	W
	S
	1' INTERVAL CONTOUR
	1.5" WATER SERVICE
	6" SANITARY SEWER

THERE ARE NO WETLANDS OR WATERS OF THE STATE LOCATED ON THIS PROPERTY.

THIS PROPERTY IS NOT LOCATED IN A FLOOD HAZARD AREA ACCORDING TO FEMA FLOOD INSURANCE RATE MAP NO. 13073C0142D, EFFECTIVE DATE SEPTEMBER 19, 2007, AND IS LOCATED IN "ZONE X".

PREPARED BY  
**TATE DESIGN GROUP**  
 SITE DESIGN ENGINEERS  
 1821 Curtis Drive, North Augusta SC 29841  
 803.226.7979 Fax 803.310.6044  
 tatedesigngroup@gmail.com



**VICINITY MAP**  
N.T.S.

**OWNER & DEVELOPER**  
**EXPRESS OIL EXCHANGE**  
 1880 SOUTH PARK DRIVE  
 BIRMINGHAM, AL 35244  
**24 HOUR CONTACT**  
**JOHN DAVIS**  
 TEL. NO.: 205-397-1164



**BEFORE YOU DIG**  
**GA. ONE CALL NUMBER:**  
**1-800-282-7411**  
 THE PRESENCE, SIZE, AND LOCATION OF THE EXISTING UNDERGROUND UTILITIES SHOWN ON THIS PLAN ARE BASED UPON INFORMATION OBTAINED FROM PREVIOUS CONSTRUCTION PLANS AND VISIBLE ABOVE GROUND STRUCTURES. THE ACTUAL LOCATION, SIZE, AND TYPE OF MATERIAL MAY VARY UPON EXCAVATION. THERE MAY BE OTHER EXISTING UTILITIES ON THIS SITE NOT SHOWN ON THIS PLAN. THE CONTRACTOR IS RESPONSIBLE FOR LOCATING ALL EXISTING UTILITIES PRIOR TO ANY DEMOLITION, EXCAVATION, AND/OR CONSTRUCTION. THE CONTRACTOR IS ADVISED TO CONTACT THE LOCAL UNDERGROUND UTILITY LOCATION SERVICE PRIOR TO ANY DEMOLITION, EXCAVATION, AND/OR CONSTRUCTION.

#### UTILITY COMPANIES:

WATER AND SEWER: AUGUSTA UTILITY DEPARTMENT  
 (706) 821-1851  
 AFTER HOURS EMERGENCY (706) 842-3060  
 POWER: GEORGIA POWER COMPANY:  
 4224 EVANS TO LOCKS RD.  
 EVANS, GEORGIA 30809  
 (888) 660-5890  
 GAS: GEORGIA NATURAL GAS:  
 (877) 850-5200  
 AFTER HOURS EMERGENCY (877) 427-4321  
 TELEPHONE: BELL SOUTH  
 (888) 764-2500  
 CABLE: COMCAST  
 105 RIVER SHOALS PARKWAY  
 AUGUSTA, GEORGIA 30909  
 (706) 733-7712



**MOORE AND ASSOCIATES**  
**ENGINEERING AND CONSULTING, INC.**  
 1009 East Avenue  
 North Augusta, Georgia 29861  
 (803) 219-2789 / FAX (803) 219-3648  
 www.Moore-mc.com

NO.	DATE	REVISION	ISSUED FOR	BY	CK.	APVD.
A	4/13/17		ARC REVIEW	MST	MST	MSM

**MOORE AND ASSOCIATES**  
**ENGINEERING AND CONSULTING**  
This document is the property of Moore and Associates, Inc. The unauthorized reproduction, copying, or otherwise use of this document is strictly prohibited and any infringement thereupon may be subject to legal action.

**EXPRESS OIL CHANGE BUILDING**  
 837 CABELA DRIVE, AUGUSTA GA 30909  
 COVER SHEET AND EXISTING CONDITIONS

SCALE: 1" = 20'  
 DATE: 4/12/2017  
 DRAWN BY: MST  
 CHECKED BY: MST  
 M&A JOB NO. 16213C

**C-101**