

Shear Plate Connection Schedule			
Length	# of bolts	End reaction	Min plate thickness
6"	2	8.2k	1/4"
9"	3	16.3k	1/4"
12"	4	26.1k	1/4"
15"	5	36.3k	1/4"
18"	6	46.3k	1/4"
21"	7	56.4k	1/4"

Reinforcing Steel Lap Splice Lengths				
Bar Size	Column Splices	Bm, Ftg & Wall Splices		CMU Wall Splices
		Top Bars	Other Bars	
# 3	12"	19"	15"	18"
# 4	15"	25"	19"	24"
# 5	19"	31"	24"	30"
# 6	23"	37"	29"	36"
# 7	26"	54"	42"	42"
# 8	30"	62"	48"	48"
# 9	34"	70"	54"	54"
# 10	38"	79"	61"	60"
# 11	42"	87"	67"	66"

- Notes:
- Top bars are any horizontal reinforcing steel that has another layer of steel more than 2" below the bars or reinforcing steel that has more than 12" of concrete below the bars.
  - All horizontal reinforcing bars in walls may be detailed as "Other Bars".
  - All corner bars may be detailed as "Other Bars".

Frame Connection Schedule			
Length	# of bolts	End reaction	Min angle thickness
5-1/2"	2	37.1k	5/16"
8-1/2"	3	55.3k	5/16"
11-1/2"	4	72.7k	5/16"
14-1/2"	5	88.7k	5/16"
17-1/2"	6	104.0k	5/16"

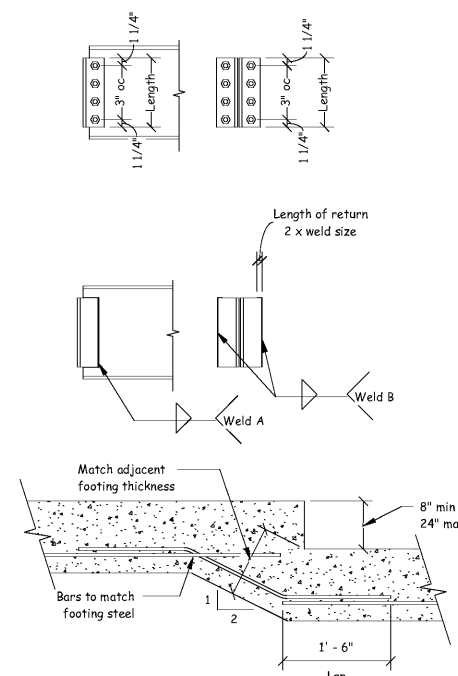
Length	Size of Weld A	End reaction	Min angle thickness
5-1/2"	3/16"	37.1k	5/16"
8-1/2"	3/16"	55.3k	5/16"
11-1/2"	3/16"	72.7k	5/16"
14-1/2"	3/16"	88.7k	5/16"
17-1/2"	3/16"	104.0k	5/16"

Length	Size of Weld B	End reaction	Min angle thickness
5-1/2"	1/4"	14.6k	5/16"
8-1/2"	1/4"	32.2k	5/16"
11-1/2"	1/4"	53.4k	5/16"
14-1/2"	1/4"	76.6k	5/16"
17-1/2"	1/4"	101.0k	5/16"

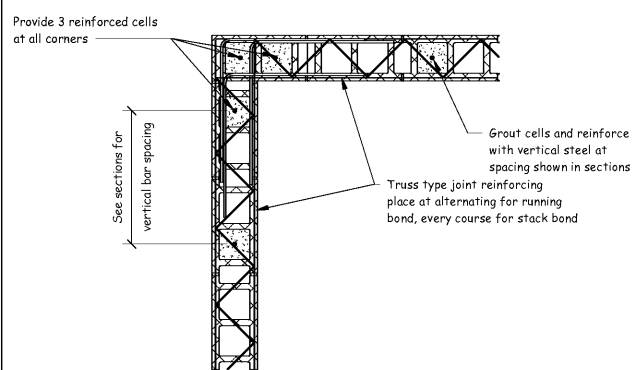
Depth of beam	Min length of angle	Depth of beam	Min Length of angle
W12	5-1/2"	W24	11-1/2"
W14	5-1/2"	W27	11-1/2"
W16	5-1/2"	W30	14-1/2"
W18	8-1/2"	W33	14-1/2"
W21	8-1/2"	W36	17-1/2"



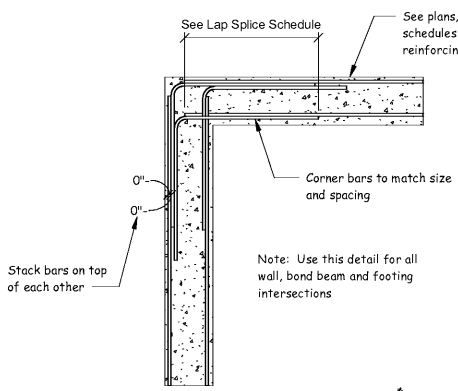
Single Footing Step

Typical Anchor Bolt Detail

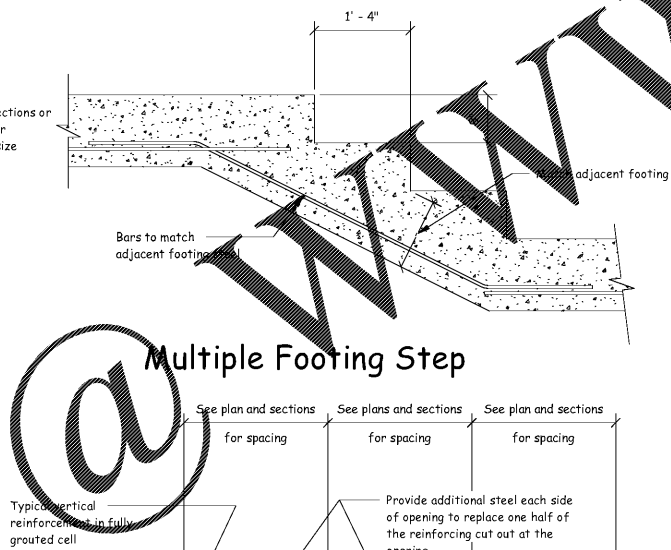
Typical Base Plate



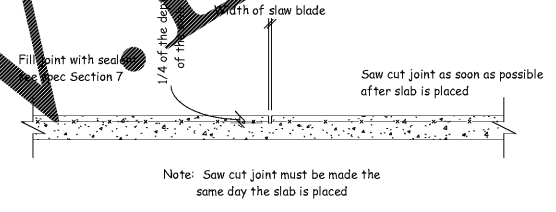
Typical Joint Reinforcing at Corner



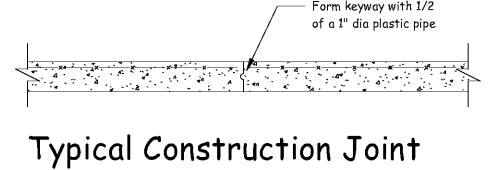
Typical Beam, Wall or Footing Reinforcing at Corners



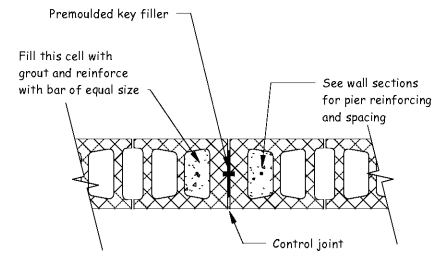
Multiple Footing Step



Typical Control Joint

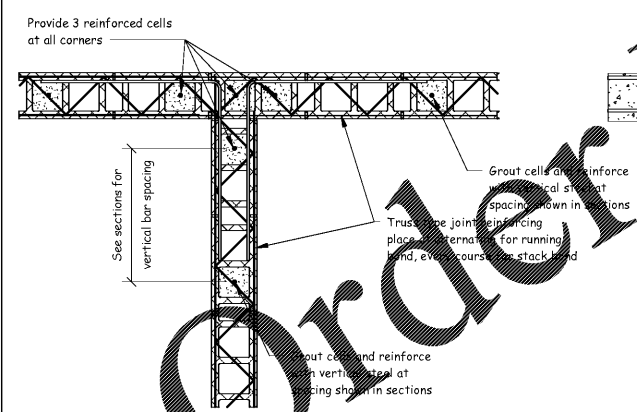


Typical Construction Joint

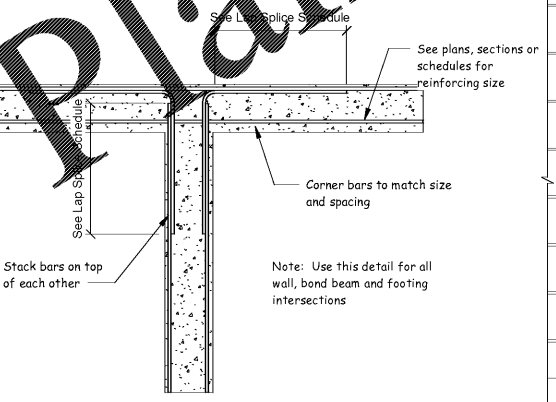


Typical Masonry Wall Control Joint

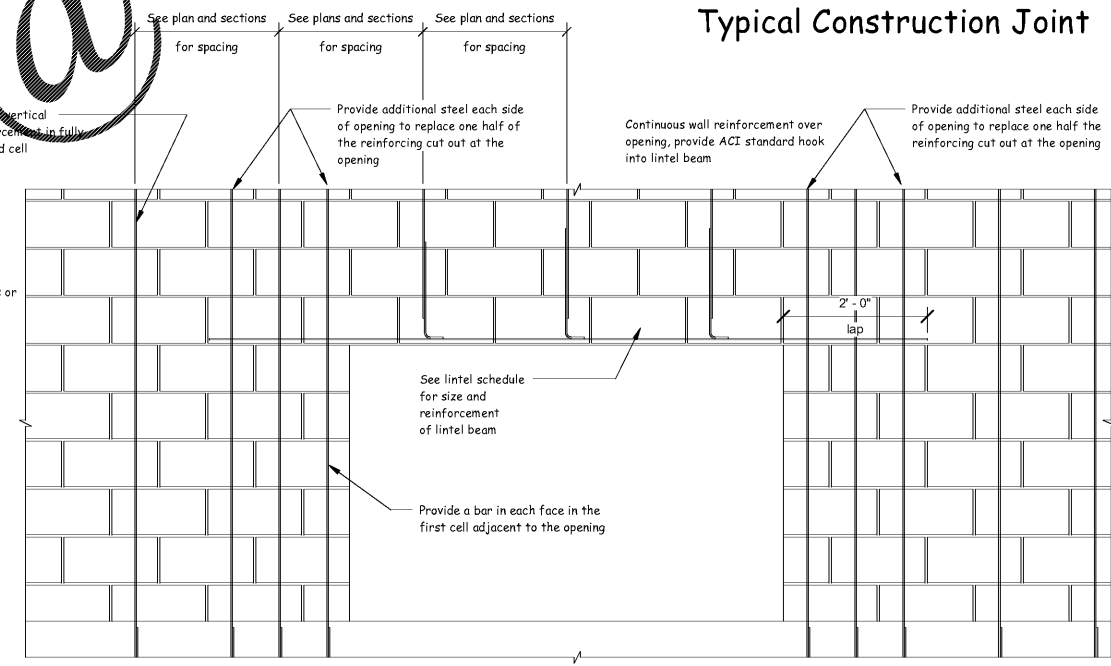
- Note:
- See architectural plan for spacing. If spacing is not shown place joints at 3 times the wall height but not greater than 20'-0" o.c., and at 4'-0" from corners.
  - Extend all horizontal reinforcing including bond beam steel thru control joints.



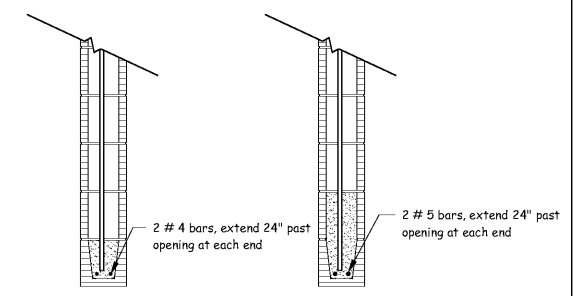
Typical Joint Reinforcing at Intersection



Typical Beam, Wall or Footing Reinforcing at Intersections



CMU Lintel Elevation



CMU Lintel Section

Less than 4'-0"      Less than 8'-0"

John Jones, PE, SE  
Structural Engineer  
Pell City, AL 205.884.5334  
Georgia Registered Professional Engineer No. 939752

AHO ARCHITECTS, LLC  
www.ahoarch.com

Express Oil Change & Tire Engineers  
Single Building - Right Hand Oil Change  
Augusta, Georgia

FINAL		
No.	Description	Date

© 2017 Aho Architects, LLC. All Rights Reserved.

Typical Details	
Project number	16031
Date	04.03.17
Drawn by	jci
Checked by	jd
<b>S0.2</b>	
Scale	3/4" = 1'-0"