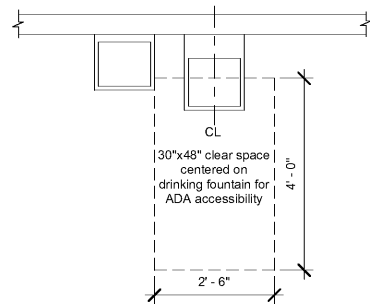
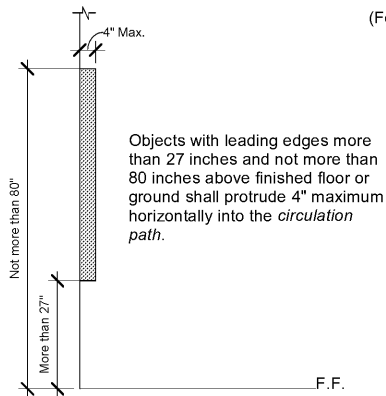


(For dimensional purposes only)



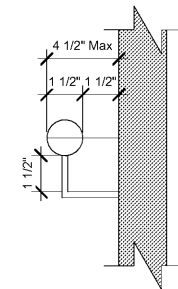
① Drinking Fountain Mounting Details (Plan)
1/2" = 1'-0"

(For dimensional purposes only)



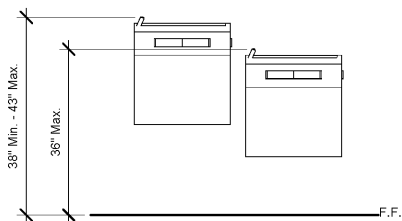
② Limits of Protruding Objects
1/2" = 1'-0"

(For dimensional purposes only)



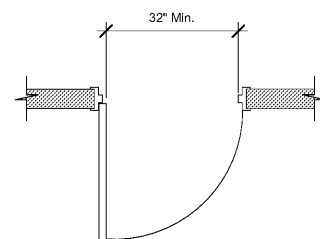
③ Handrail Detail
3" = 1'-0"

(For dimensional purposes only)



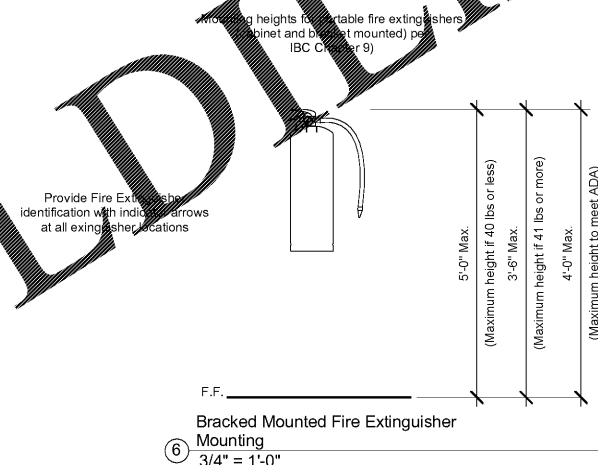
④ Drinking Fountain Mounting Details (Front)
1/2" = 1'-0"

(For dimensional purposes only)



⑤ Clear Width of Doorways
1/2" = 1'-0"

(For dimensional purposes only)

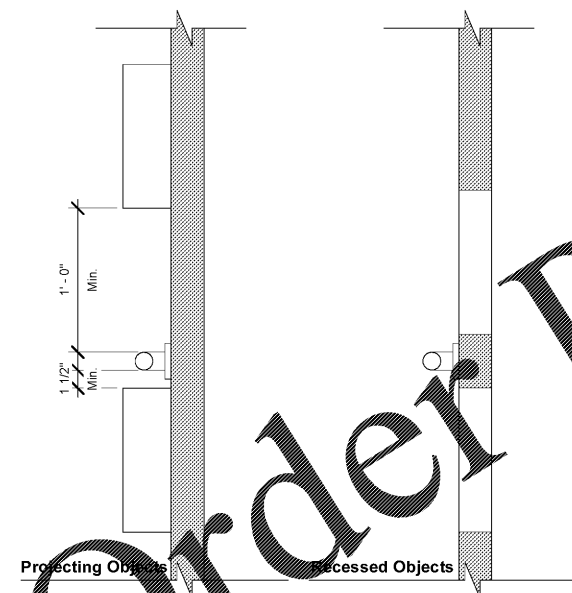


⑥ Bracked Mounted Fire Extinguisher Mounting
3/4" = 1'-0"

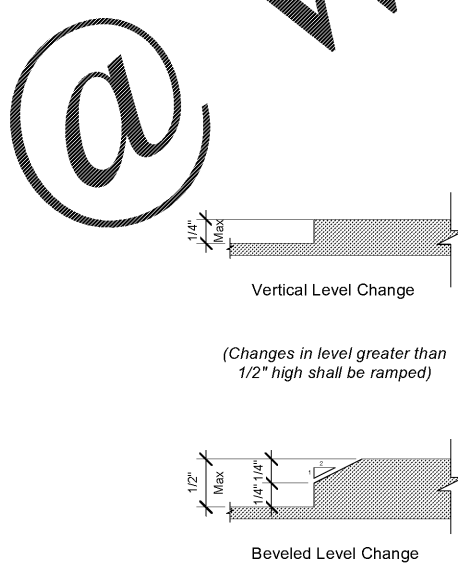
(For dimensional purposes only)

(For dimensional purposes only)

(For dimensional purposes only)



⑦ Spacing of Grab Bars
1/2" = 1'-0"



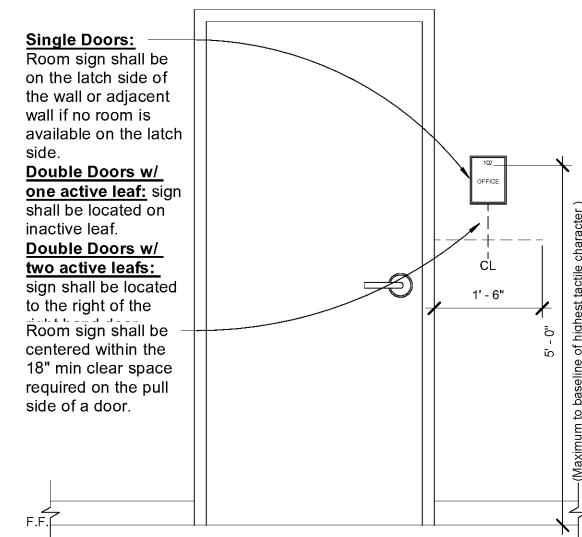
⑧ Level Change
12" = 1'-0"

Single Doors: Room sign shall be on the latch side of the wall or adjacent wall if no room is available on the latch side.

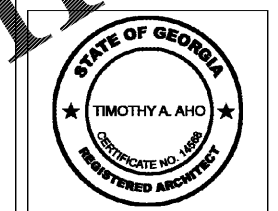
Double Doors w/ one active leaf: sign shall be located on inactive leaf.

Double Doors w/ two active leaves: sign shall be located to the right of the

Room sign shall be centered within the 18" min clear space required on the pull side of a door.



⑨ Signage Mounting Heights
3/4" = 1'-0"



Express Oil Change & Tire Engineers
Single Building - Right Hand Oil Change
Augusta, Georgia

FINAL

No.	Description	Date

© 2017 Aho Architects, LLC. All Rights Reserved.

Interior Dimensional Info.	
Project number	16031
Date	04/04/2017
Drawn by	ARC
Checked by	TAA
A605	
Scale	As indicated