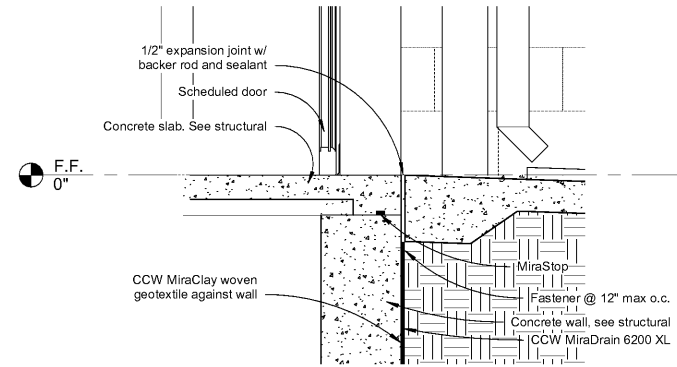
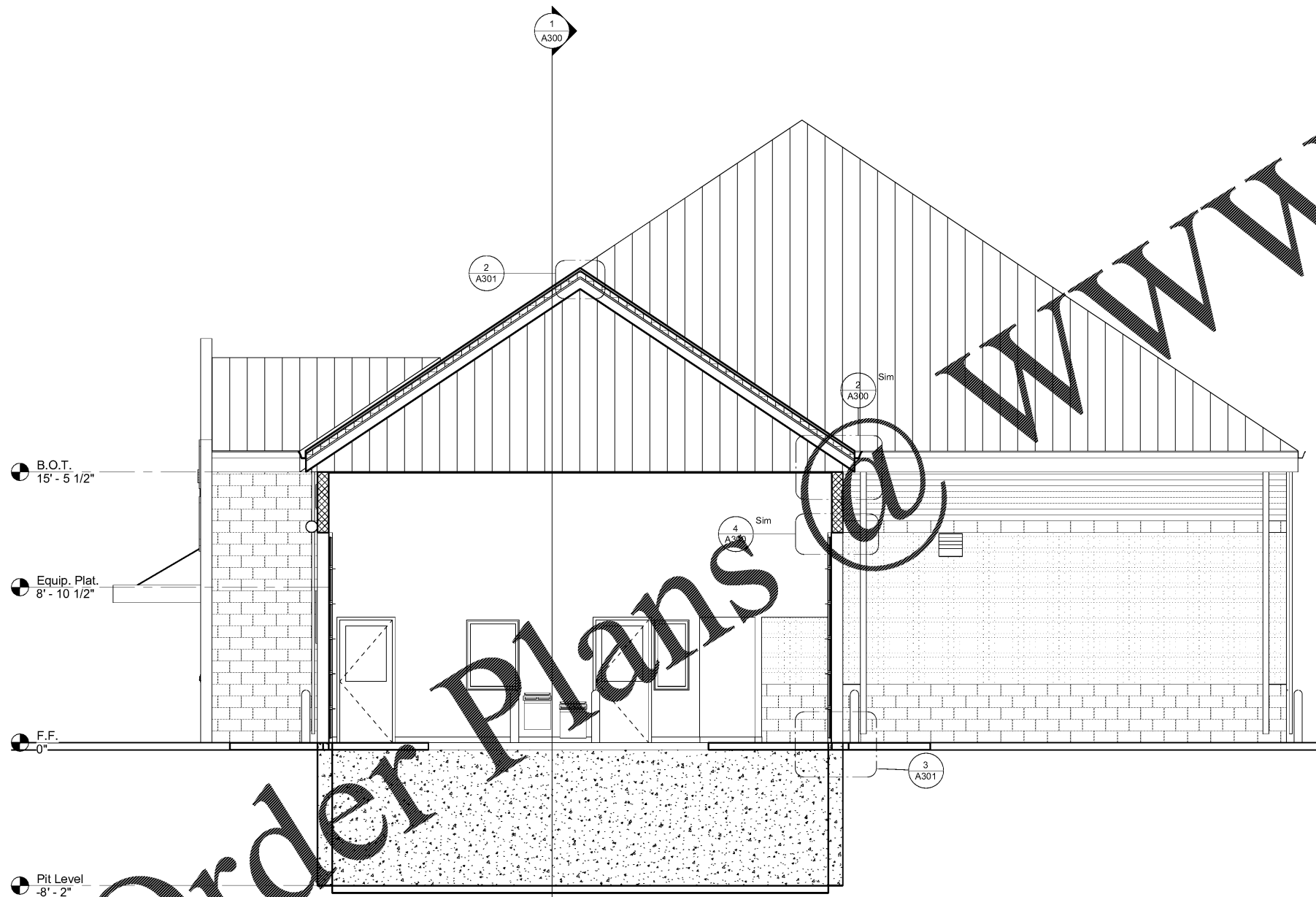


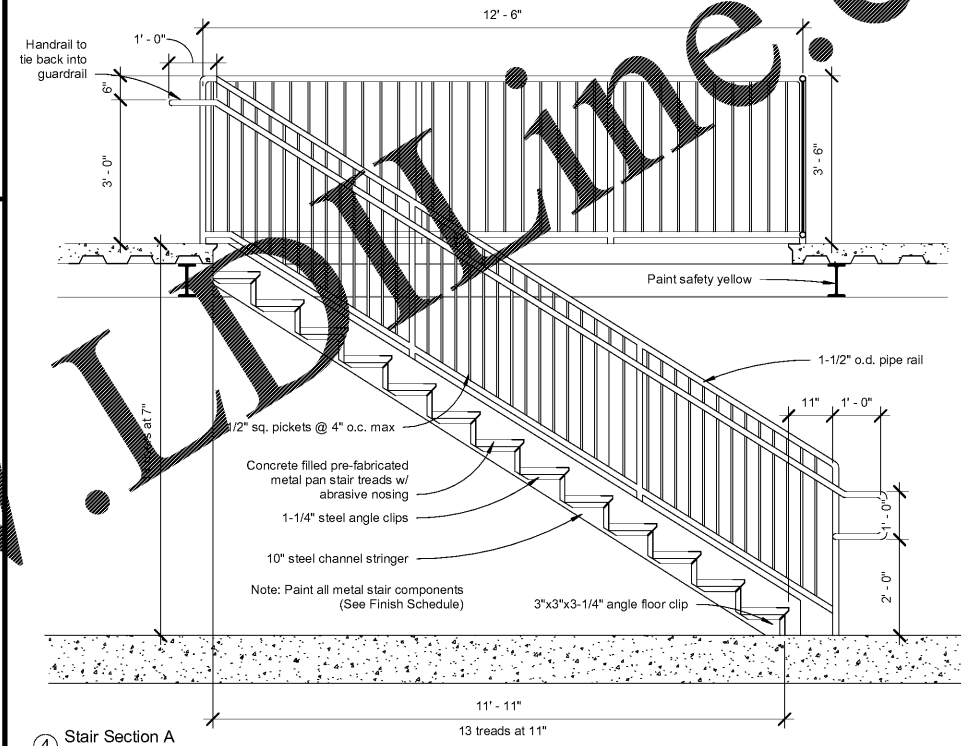
② Typical Ridge/Hip Detail
1" = 1'-0"



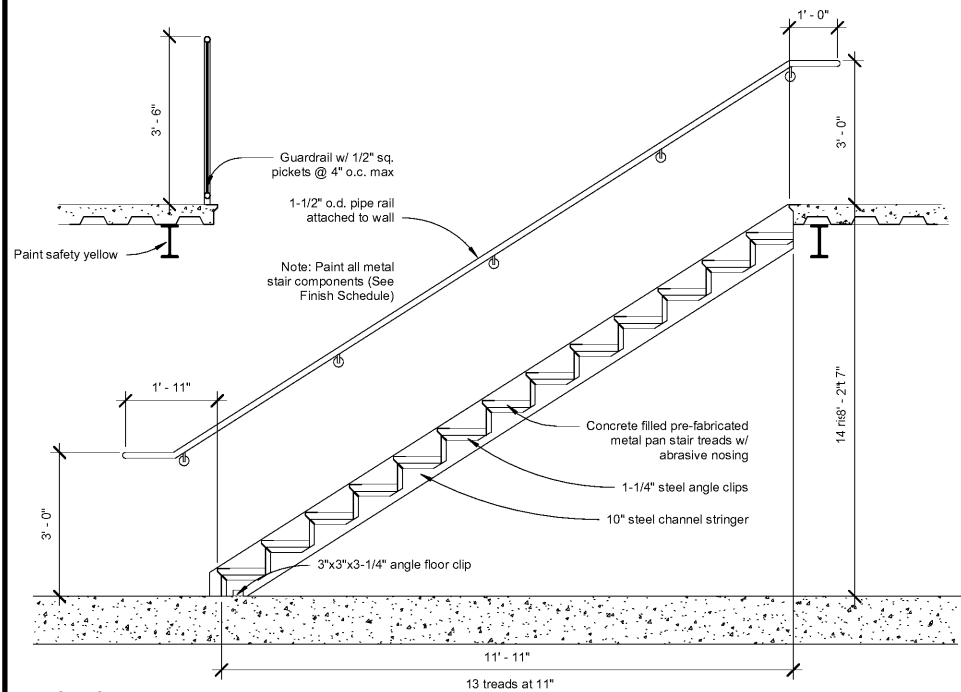
③ Slab Detail
1" = 1'-0"



① Section 2
1/4" = 1'-0"



④ Stair Section A
1/2" = 1'-0"



⑤ Stair Section B
1/2" = 1'-0"



Express Oil Change & Tire Engineers
Single Building - Right Hand Oil Change
Augusta, Georgia

FINAL

No.	Description	Date

© 2017 Aho Architects, LLC. All Rights Reserved.

Building Sections

Project number 16031
Date 04/04/2017
Drawn by EM
Checked by TAA

A301

Scale As indicated