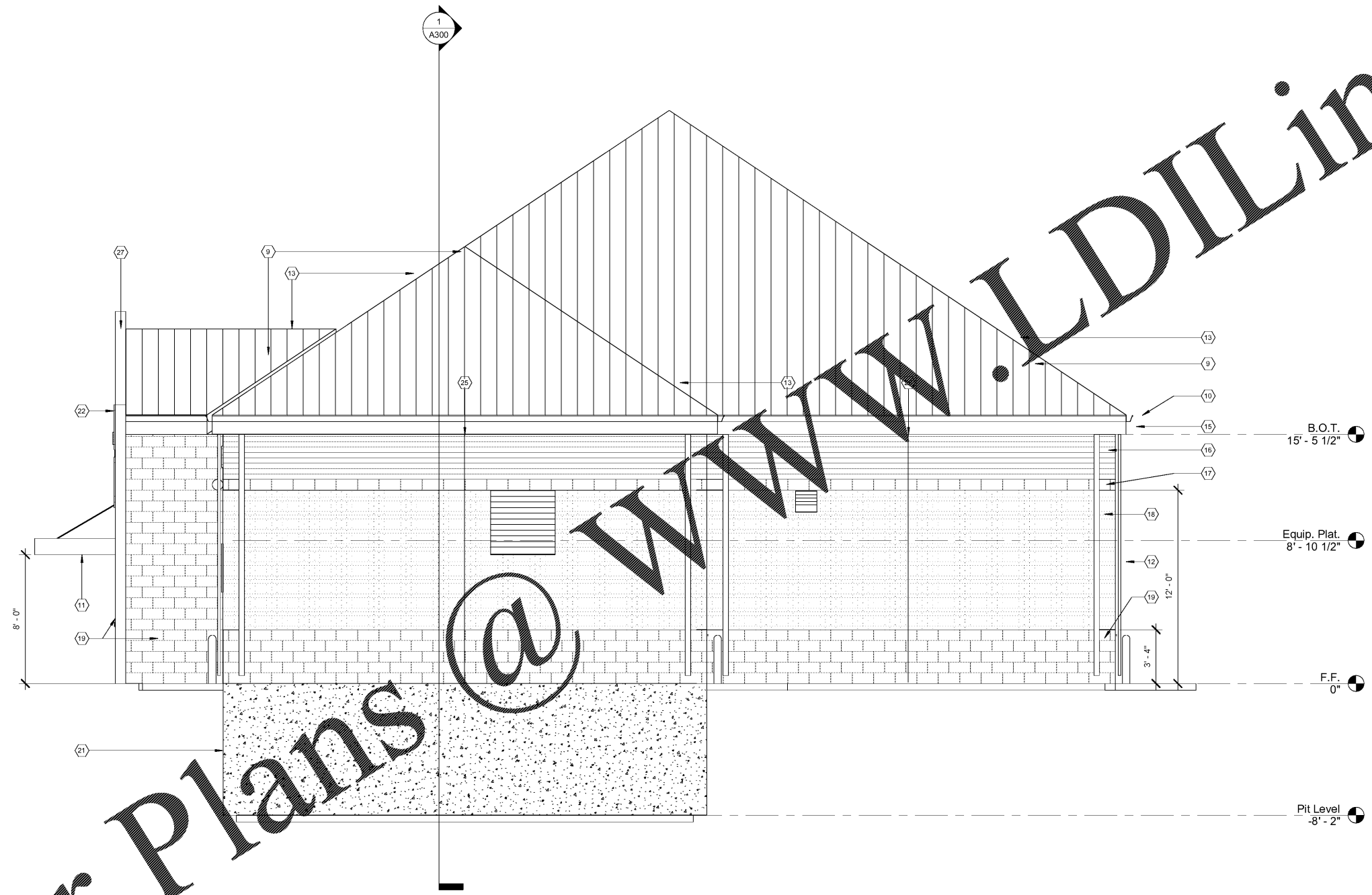


Note: Align top of exterior wall packs with bottom of split face CMU banding at 12'-0" a.f.f. Top of emergency lighting at exit doors to be aligned with top of door frame.



Express Oil Change & Tire Engineers  
 Single Building - Right Hand Oil Change  
 Augusta, Georgia



Order Plans

WWW.LDILine.com

1 Right Elevation  
 1/4" = 1'-0"

FINAL

No.	Description	Date

© 2017 Aho Architects, LLC. All Rights Reserved.

Exterior Elevation - Right

Project number 16031  
 Date 04/04/2017  
 Drawn by ARC  
 Checked by TAA

A203

Scale 1/4" = 1'-0"