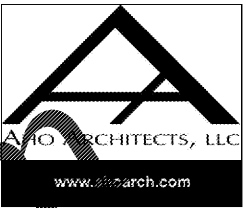


Note: Align top of exterior wall packs with bottom of split face CMU banding at 12'-0" a.f.f. Top of emergency lighting at exit doors to be aligned with top of door frame.



Express Oil Change & Tire Engineers
 Single Building - Right Hand Oil Change
 Augusta, Georgia

FINAL

No.	Description	Date

© 2017 Aho Architects, LLC. All Rights Reserved.

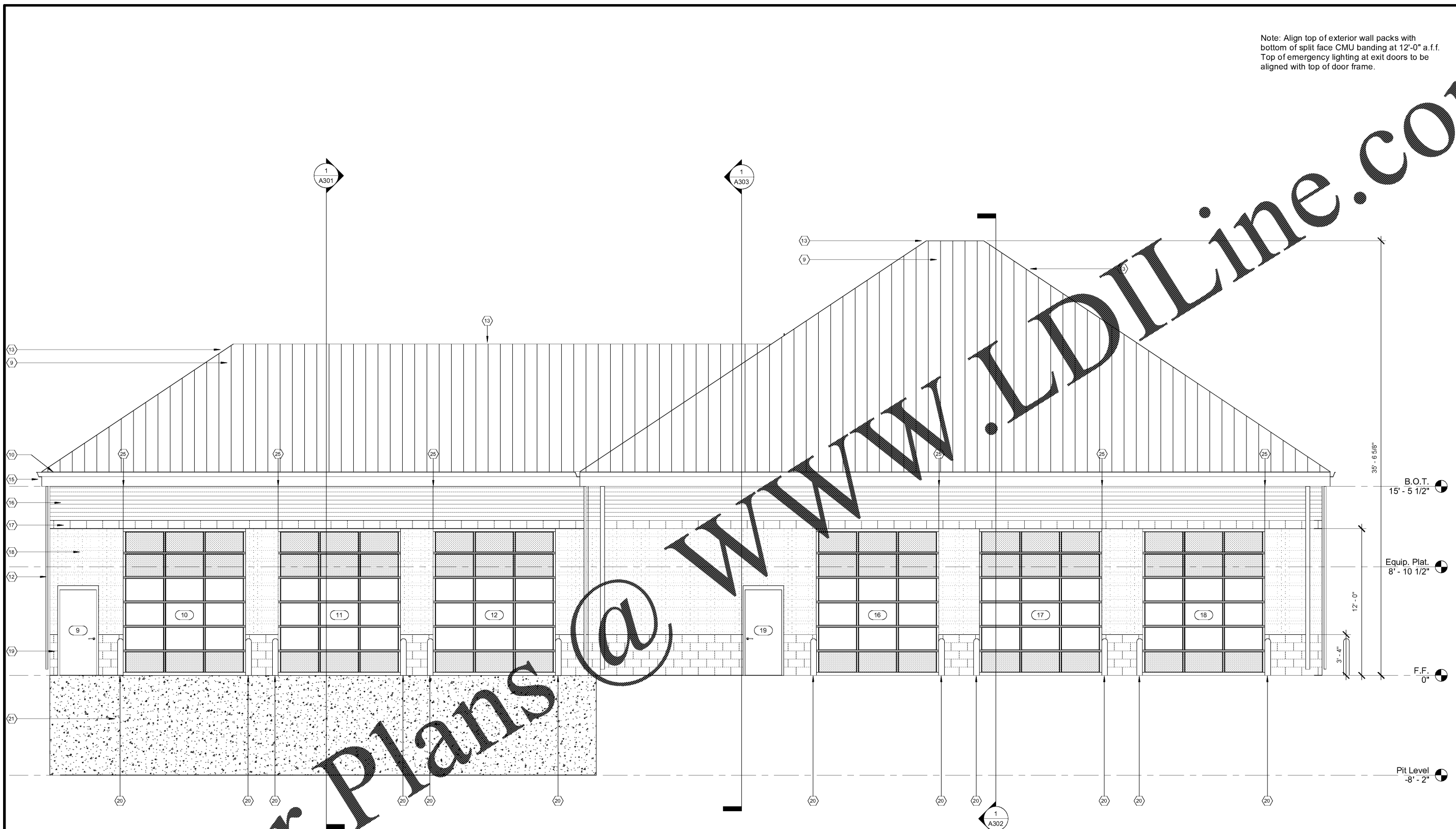
Exterior Elevation - Rear

Project number 16031
 Date 04/04/2017
 Drawn by ARC
 Checked by TAA

A201

Scale 1/4" = 1'-0"

4/4/2017 2:12:32 PM



1 Rear Elevation
 1/4" = 1'-0"

Order Plans @