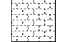









147 Wappoo Creek Drive
Suite 400
Charleston, SC 29412

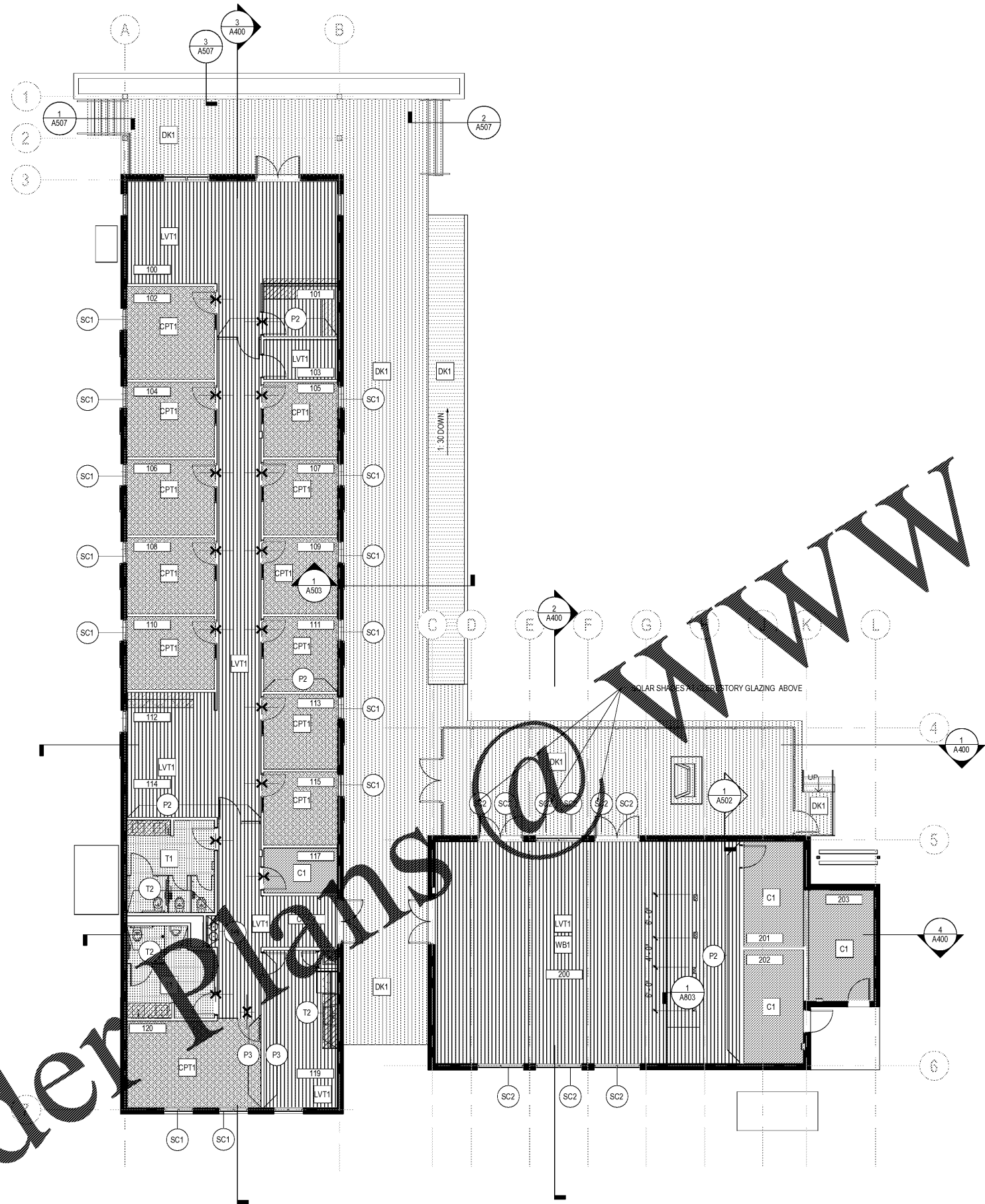
P 843.762.2222

LEGEND

-  CERAMIC TILE (T1/T2)
-  CARPET TILE (CPT1)
-  LVT (LVT1)
HATCH INDICATES DIRECTION
-  WB1
WOOD BASE, SEE DETAIL 2 ON SHEET A803
-  DECKING (DK1)
HATCH INDICATES DIRECTION
-  SEALED CONCRETE (C1)
-  FLOOR OUTLET, COORDINATE WITH ELECTRICAL
-  FLOOR DRAIN, COORDINATE WITH PLUMBING. SEE A200 FOR DIMENSIONS & LOCATION

GENERAL NOTES

- A REFER TO SHEETS A001 & A002 FOR ADDITIONAL NOTES, SYMBOLS AND SCHEDULES.
- B REF ELEVATIONS FOR ADDITIONAL FINISH INFORMATION.
- C ALL FINISHES TO MEET CLASS B: FLAME SPREAD 26% SMOKE DEVELOPED 0-450 PER IBC 2015 CHAPTER 8.
- D ALL FLOOR TILES TO BE SLIP RESISTANT IN ACCORDANCE WITH TCNA RECOMMENDATION FOR DCOF IN WET AREAS.
- E ALL WALLS TO BE P1 UNO.
- F ALL ROOMS TO HAVE RUBBER BASE (RB 1) UNO.
- G LEVEL 5 GYPSUM BOARD FINISH IN COUNCIL CHAMBERS.



Revision	Date	Description

Town of James Island
TOWN HALL

1122 Dills Bluff Road
Charleston, SC 29412

Project Number:	15102
Checked By:	JGC
Drawn By:	EGB
Date:	04/03/17
Scale:	1/8" = 1'-0"

A141 FINISH PLAN



1 FINISH PLAN
A141 SCALE: 1/8" = 1'-0"