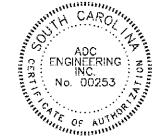


147 Wappoo Creek Drive
Suite 400
Charleston, SC 29412
P 843.762.2222



ENGINEERING SPECIALISTS
2211 WASHINGTON BLVD
HARTSBURG, SC 29419
843-566-0161
fax 843-566-0162
ACCEPTED FOR RECORD - 1/18



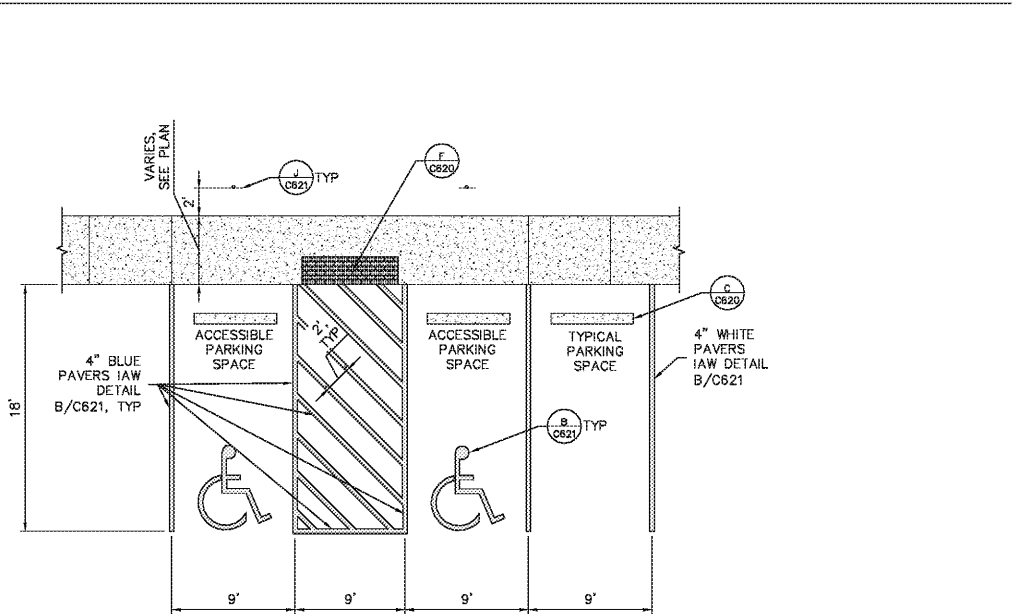
| Revision | Date | Description |
|----------|------------|-------------------|
| 1 | 04/03/2017 | SCDOT & 100% QAQC |

Town of James Island
TOWN HALL

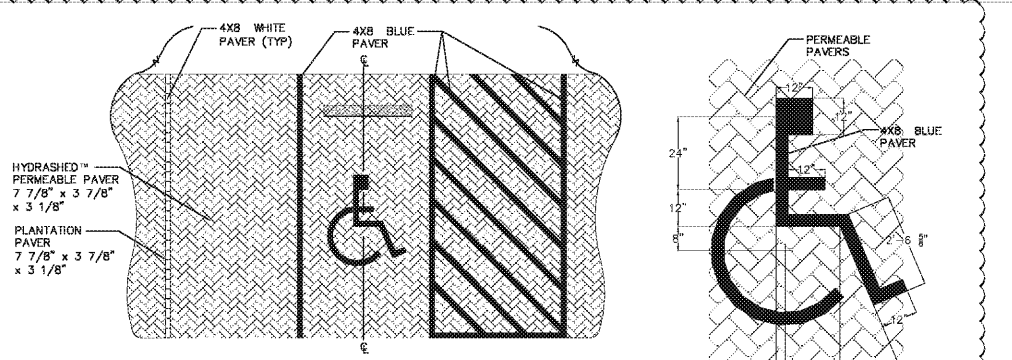
Dills Bluff Road
Charleston, SC 29412

| | |
|-----------------|----------------|
| Project Number: | 15102/ADC15304 |
| Checked By: | CBC |
| Drawn By: | JMC |
| Date: | 01/23/17 |
| Scale: | NOT TO SCALE |

C621
Civil Details -
Striping

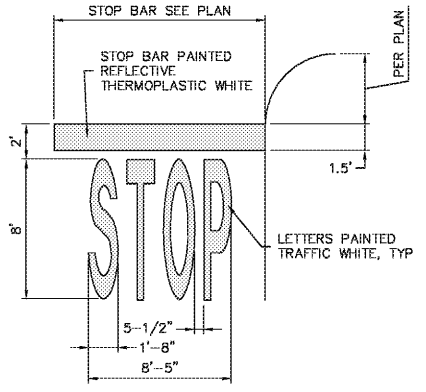


A ACCESSIBLE PARKING DETAIL

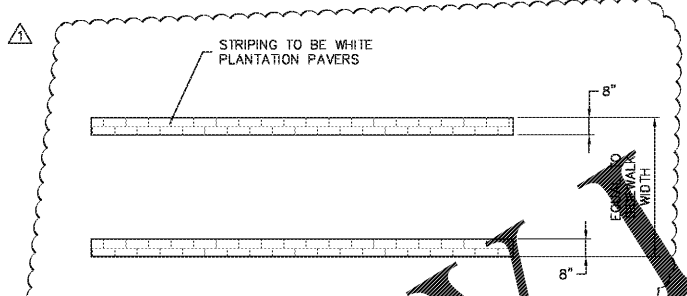


B PERMEABLE PAVER PAVEMENT STRIPING

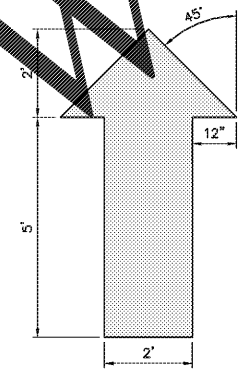
NOTES:
1. ALL PARKING SPACE STRIPING AND ACCESSIBLE SYMBOLS TO BE PLANTATION PAVERS (COLORS: BLUE AND WHITE).
2. ALL OTHER PAVERS TO BE HYDRASHED™ PAVERS (COLORS: HAMPTON OR APPROVED OTHER).
3. SEE CIVIL PLANS FOR NUMBER AND LAYOUT OF ACCESSIBLE SPACES, AND SEE DETAIL E/C620 FOR PAVER SECTION.
4. PAVERS BY LOWCOUNTRY PAVER (866-468-3561), OR APPROVED EQUAL.



D STOP BAR

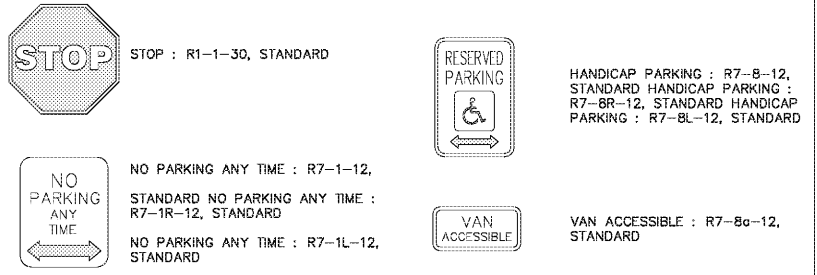


E CROSSWALK DETAIL



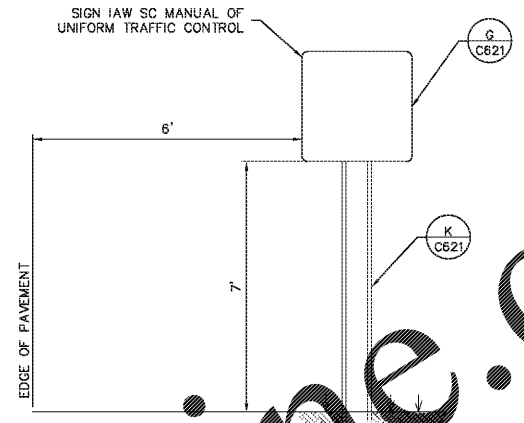
NOTE:
ALL ARROWS TO BE PAINTED REFLECTIVE THERMOPLASTIC WHITE.

F TRAFFIC FLOW ARROWS AT DRIVEWAY EXITS

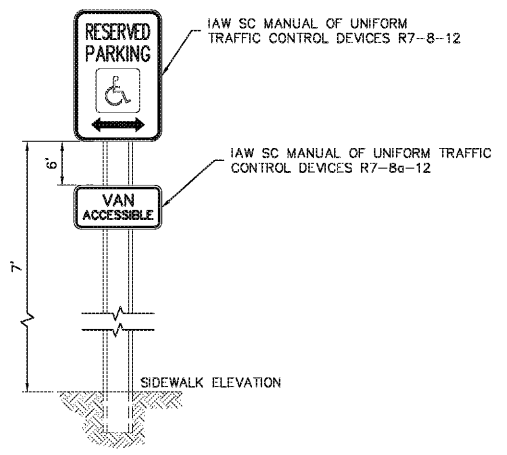


NOTE:
SIGNS SHALL BE IN ACCORDANCE WITH THE "MANUAL ON UNIFORM TRAFFIC CONTROL DEVICES" (MUTCD), LATEST EDITION.

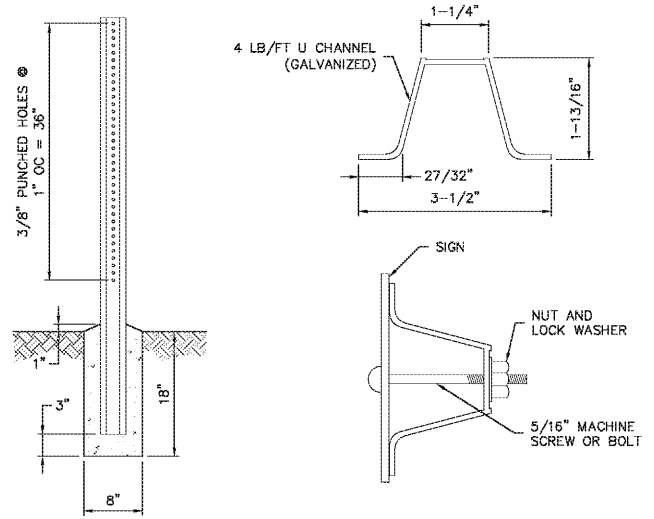
G MUTCD STANDARD SIGNS



H STANDARD SIGN LOCATION DETAIL



J ACCESSIBLE PARKING SIGN



K SIGN POST DETAIL

Order Plans @ WWW.LDILLINE.COM