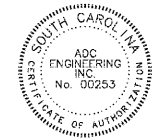


147 Wappoo Creek Drive
Suite 400
Charleston, SC 29412

P 843.762.2222



ENGINEERING SPECIALISTS
1015 BRUNNEN 1, WOODBRIDGE PARKWAY, WOODBRIDGE
1224 WHEATBRIDGE ROAD
HARRISBURG, SC 29610
843-566-0161
fax 843-566-0162
ACCREDITED: 02/28/16



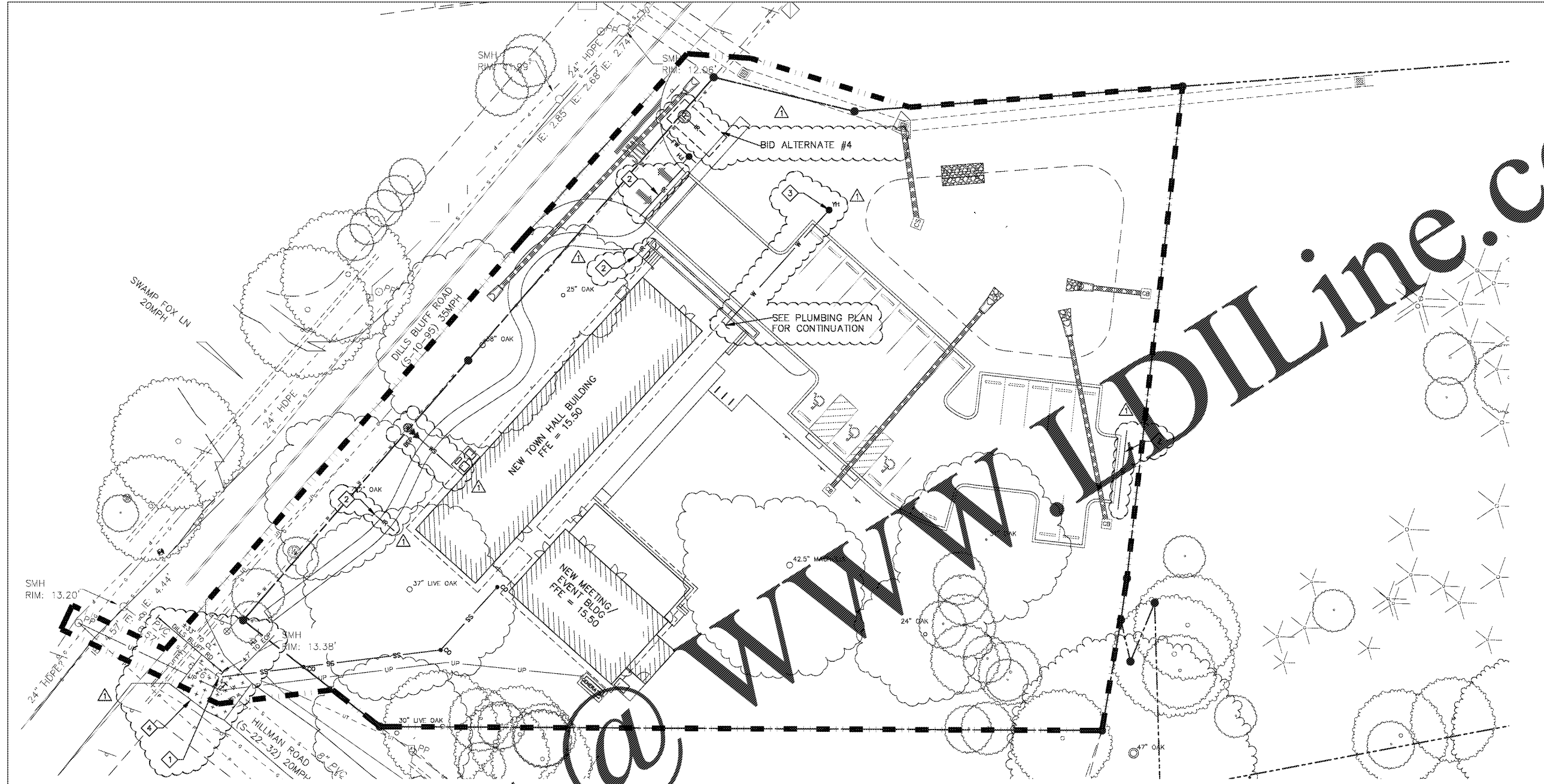
Revision Date	Description
04/03/2017	SCDOT & 100% QAQC

Town of James Island
TOWN HALL

Dills Bluff Road
Charleston, SC 29412

Project Number:	15102/ADC15304
Checked By:	CBC
Drawn By:	JMC
Date:	01/23/17
Scale:	1" = 20'

C400
Utility Plan



GENERAL NOTES:

- SEE SHEET C001 FOR CIVIL NOTES AND ABBREVIATIONS.
- CONTRACTOR IS RESPONSIBLE FOR ALL WORK SHOWN, UNLESS SPECIFICALLY INDICATED OTHERWISE.
- CONTRACTOR SHALL VISIT THE SITE PRIOR TO BIDDING TO DETERMINE THE EXTENT OF THE PROJECT.
- ALL PROJECT STAKEOUT SHALL BE PERFORMED BY A REGISTERED LAND SURVEYOR TO BE PAID FOR BY THE CONTRACTOR. FOR STAKEOUT, DO NOT RELY SOLELY ON THE PHYSICAL SCALE AS SHOWN IN DRAWINGS. REFER TO THE GIVEN DIMENSIONS, SYMBOL LEGEND, KEYNOTES, AND REFERENCED DETAILS FOR CORRECT STAKEOUT.
- ALL CONTRACTORS/SUBCONTRACTORS PERSON THAT WILL BE ENGAGED IN ANY DISTURBING ACTIVITIES SHALL COMPLY WITH ALL EROSION CONTROL AND STORMWATER UTILITY PREVENTION REQUIREMENTS OBTAINED THROUGHOUT THE DRAWINGS, SPECIFICATIONS AND PERMITS.

KEYNOTES:

- INSTALL NEW SANITARY SEWER SERVICE TO EXISTING MANHOLE IAW DETAIL C/C641
- INSTALL 6" PVC SERVICE FOR FUTURE IRRIGATION
- INSTALL FREEZE-PROOF NON-INTERFERING SANITARY YARD HYDRANT MEETING ASSE 105" WITH INTEGRAL BACKFLOW PREVENTER MEETING ASSE 105" FREEZEFLOW MODEL 2133E WITH APPROXIMATE EQUIVALENT SERVICE
- MILL AND OVERLAY 2" ASPHALT FULL WIDTH OF PAVEMENT SHOWN, AFTER INSTALLATION OF SEWER SERVICE

UTILITY NOTES:

- GENERAL CONTRACTOR SHALL COORDINATE ALL SITE UTILITIES AND STORM DRAINAGE INSTALLATION SCHEDULES TO AVOID POTENTIAL UTILITY CONFLICTS.
- UTILITY CONTRACTOR SHALL PROVIDE WATER AND SEWER RECORD DRAWINGS AND EASEMENT PLATS IN ACCORDANCE WITH UTILITY PROVIDER'S REQUIREMENTS.

CIVIL LEGEND — WATER AND SEWER

- FIRE HYDRANT ASSEMBLY — INSTALL IAW DETAIL A/C640.
- GATE VALVE — INSTALL IAW DETAIL C/C640.
- WATER METER — INSTALL IAW DETAIL C/C640.
- 1 1/2" IRRIGATION METER & VALVE — INSTALL IAW DETAIL C/C640.
- SEWER CLEANOUT — INSTALL USING 300 MIN. SPACING AND IAW DETAIL D/C641.
- 1 1/2" WATER SERVICE.
- 6" SEWER SERVICE — INSTALL IAW ASTM D 3034. ALL WORK SHALL MEET ASTM D 2321 AND SCDHEC REQUIREMENTS.
- UNDERGROUND POWER (SEE SITE ELECTRIC PLAN)
- 3/4" WATER SERVICE TO YARD HYDRANT
- INSTALL BELOW GROUND DOUBLE CHECK VALVE ASSEMBLY IAW DETAIL B/C640.
- NEW LIGHT POLE
- LIMITS OF CONSTRUCTION/LIMITS OF DISTURBANCE

