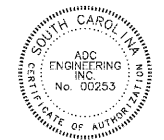


147 Wappoo Creek Drive
Suite 400
Charleston, SC 29412

P 843.762.2222



ENGINEERING SPECIALISTS
5015 BRUNNEN WAY, SUITE 200, FORT WORTH, TX 76106
1224 WHEATBRIDGE SQUARE, HARRISBURG, PA 17104
HARRISBURG, SC 29410
843-566-0161
fax 843-566-0162
ACCEPTED FOR RECORD 1-18-16



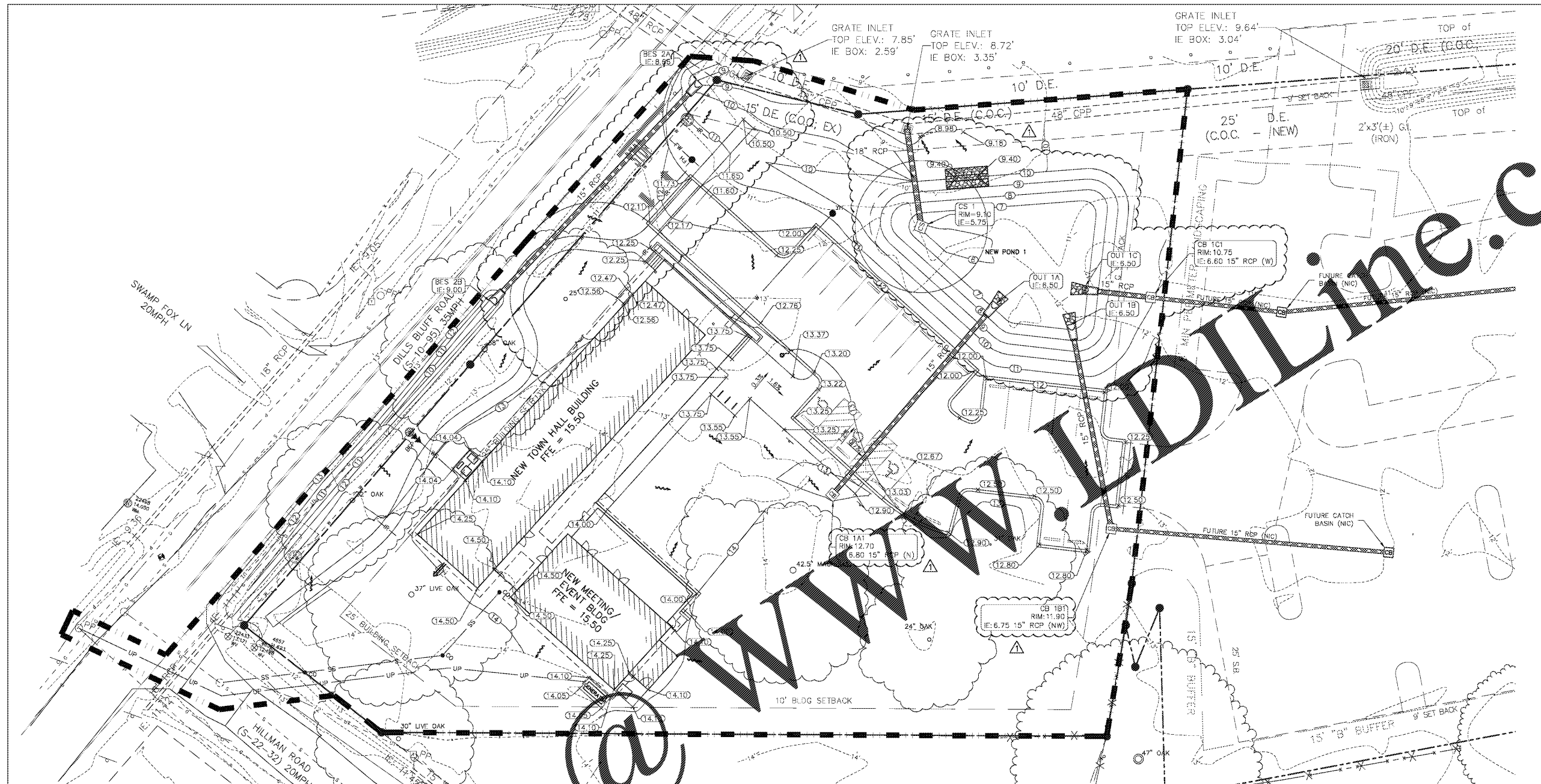
Revision Date	Description
04/03/2017	SCDOT & 100% QAQC

Town of James Island
TOWN HALL

Dills Bluff Road
Charleston, SC 29412

Project Number:	15102/ADC15304
Checked By:	CBC
Drawn By:	JMC
Date:	01/23/17
Scale:	1" = 20'

C300
Grading & Storm
Drainage Plan



GENERAL NOTES:

- SEE SHEET C001 FOR CIVIL NOTES AND ABBREVIATIONS.
- CONTRACTOR IS RESPONSIBLE FOR ALL WORK SHOWN, UNLESS SPECIFICALLY INDICATED OTHERWISE.
- CONTRACTOR SHALL VISIT THE SITE PRIOR TO BIDDING TO DETERMINE THE EXTENT OF THE PROJECT.
- ALL PROJECT STAKEOUT SHALL BE PERFORMED BY A REGISTERED LAND SURVEYOR TO BE PAID FOR BY THE CONTRACTOR. FOR STAKEOUT, DO NOT RELY SOLELY ON THE PHYSICAL SCALE AS SHOWN IN DRAWINGS. REFER TO THE GIVEN DIMENSIONS, SYMBOL LEGEND, KEYNOTES, AND REFERENCED DETAIL FOR CORRECT STAKEOUT.
- ALL CONTRACTORS/SUB CONTRACTORS/PERSON THAT WILL BE ENGAGED IN ANY DISTURBING ACTIVITIES SHALL COMPLY WITH ALL EROSION CONTROL AND STORMWATER POLLUTION PREVENTION REQUIREMENTS OBTAINED THROUGHOUT THE DRAWINGS, SPECIFICATIONS AND PERMITS.

GRADING AND DRAINAGE NOTES:

- ALL SPOTS GIVEN ARE TO BOTTOM OF CURB FOR TOP OF ASPHALT UNLESS NOTED OTHERWISE.
- GENERAL CONTRACTOR SHALL COORDINATE ALL SITE UTILITIES AND STORM DRAINAGE INSTALLATION SCHEDULES TO AVOID POTENTIAL UTILITY INTERFERENCE.

CIVIL LEGEND - GRADING AND DRAINAGE

- CATCH BASIN - INSTALL IAW DETAIL A/C630.
- CONTROL STRUCTURE - INSTALL IAW DETAIL C/C632.
- STORM DRAINAGE PIPE - INSTALL IAW DETAIL B/C631.
- BEVELED END SECTION - INSTALL IAW DETAIL A/C631.
- NEW FINISHED GRADE SPOT ELEVATION
- NEW FINISHED CONTOUR
- EXISTING GRADE SPOT
- EXISTING GRADE CONTOUR
- DRAINAGE FLOW ARROW
- INSTALL SWALE IAW DETAIL C/C631.
- SLOPE AND SLOPE DIRECTION
- PERMANENT RIP RAP APRON - INSTALL IAW DETAIL C/C710.
- EMERGENCY OVERFLOW WEIR - INSTALL IAW DETAIL A/C632
- LIMITS OF CONSTRUCTION/LIMITS OF DISTURBANCE

