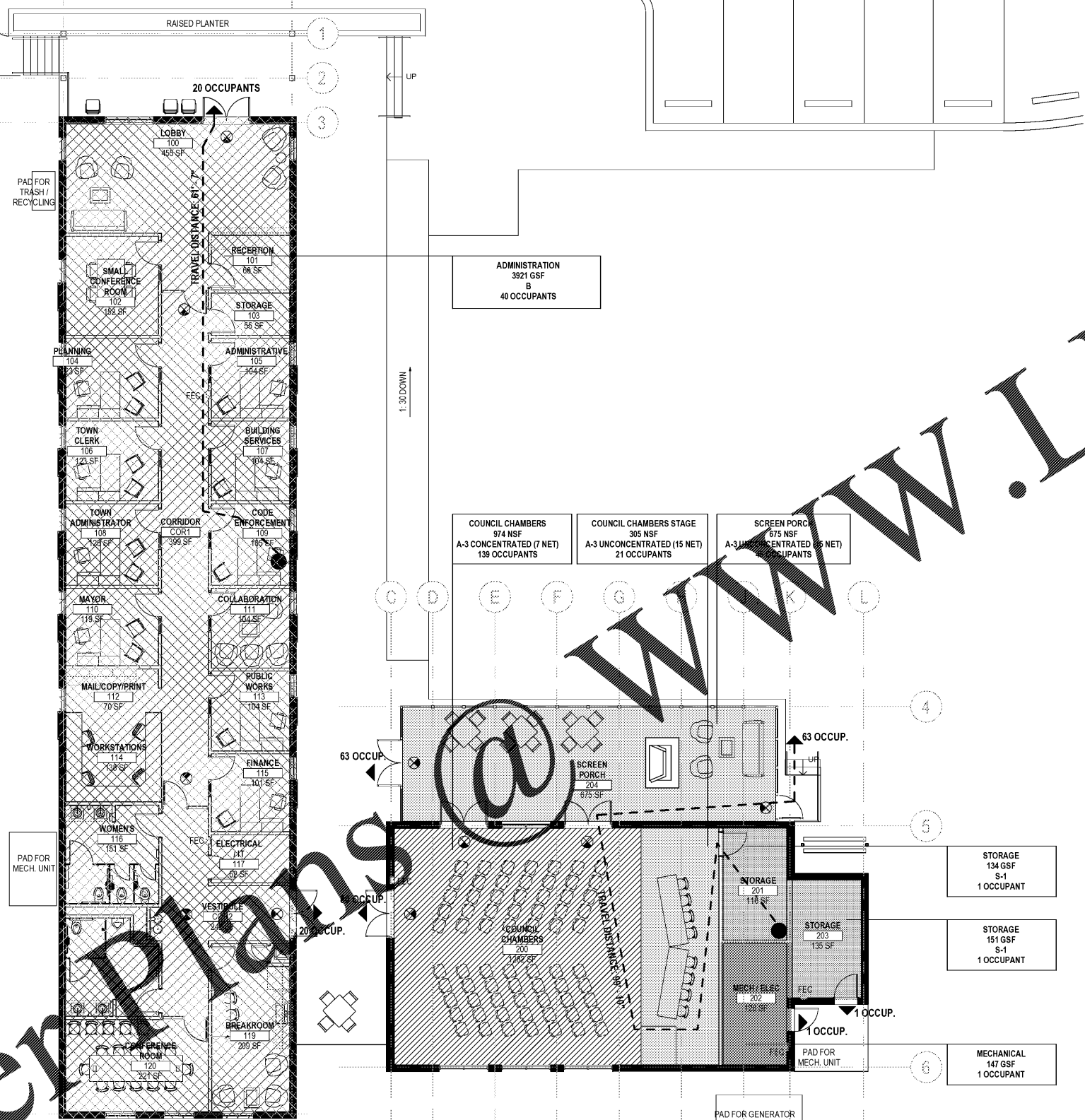


147 Wappoo Creek Drive  
Suite 400  
Charleston, SC 29412

P 843.762.2222

### LIFE SAFETY PLAN LEGEND

SYMBOLS	# OCCUPANT	EGRESS OCCUPANT LOAD
(Dashed line)		PRIMARY EGRESS
(Exit sign symbol)		EXIT SIGN
(Diagonal hatching)		ASSEMBLY (A-3 CONCENTRATED)
(Cross-hatching)		ASSEMBLY (A-3 UNCONCENTRATED)
(Grid pattern)		BUSINESS (B)
(Horizontal lines)		STORAGE (S-1)
(Vertical lines)		MECHANICAL
(FEC symbol)		FIRE EXTINGUISHER CABINET



ADMINISTRATION  
3921 GSF  
B  
40 OCCUPANTS

COUNCIL CHAMBERS  
974 NSF  
A-3 CONCENTRATED (7 NET)  
139 OCCUPANTS

COUNCIL CHAMBERS STAGE  
305 NSF  
A-3 UNCONCENTRATED (15 NET)  
21 OCCUPANTS

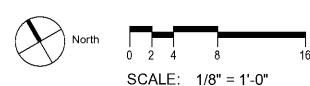
SCREEN PORCH  
675 NSF  
A-3 UNCONCENTRATED (5 NET)  
25 OCCUPANTS

STORAGE  
134 GSF  
S-1  
1 OCCUPANT

STORAGE  
151 GSF  
S-1  
1 OCCUPANT

MECHANICAL  
147 GSF  
1 OCCUPANT

1 LIFE SAFETY PLAN - FIRST FLOOR  
SCALE: 1/8" = 1'-0"



Revision Date	Description

## TOWN HALL

1122 Dills Bluff Road  
Charleston, SC 29412

Project Number:	15102
Checked By:	JGC
Drawn By:	EGB
Date:	04/03/17
Scale:	1/8" = 1'-0"

## G101 LIFE SAFETY PLAN