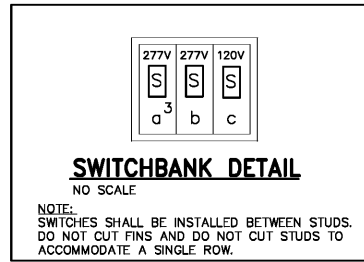


LUMINAIRE SCHEDULE							
TYPE	MANUFACTURER	CATALOG NO.	VOLT	LAMPS	MOUNTING	TOTAL WATTS	BALLAST
C1	LIGHTOLIER	8021 SERIES	120	-	RECESSED	-	(1) ELECTRONIC
	LUNERA	HN-V-G240-26W-4000-G2	120	(1) 13W LED	PAR38 BASE	15	-
P1	LIGHTOLIER	BYE16150PMA-F-8	277	-	HIGH BAY AT 12'-6" TO BOTTOM	-	(1) ELECTRONIC
	LITHONIA	18000-ACCR-G210-C6	277	(1) 40W LED	E39 BASE	45	-
T1	JUNO	T404WH	120	-	SUSPENDED TRACK	-	-
	TCP INC	LED-19-E26-P38-41K-NFL	120	(1) 19W LED	PAR38 BASE	22	-
TR	JUNO	T4WH W/T23WH	120	-	MOUNT AT 12'-6" TO BOTTOM	-	-
S1	METALUX	8TSS-132-UNV-EB81-U	277	(2) F32T8	SURFACE/CHAIN	55	(1) ELECTRONIC
S2	METALUX	SS-132-UNV-EB81-U	277	(1) F32T8	SURFACE/CHAIN	28	(1) ELECTRONIC
EM	JUNO	N1LBL	277	INCLUDED	UNIVERSAL	3	N/A
X	JUNO	NXPB3RBL-SD	277	INCLUDED	UNIVERSAL	4	N/A
X1	JUNO	NXPB3RBL-SD (FURNISHED W/DUAL HEADS)	277	INCLUDED	UNIVERSAL	4	N/A

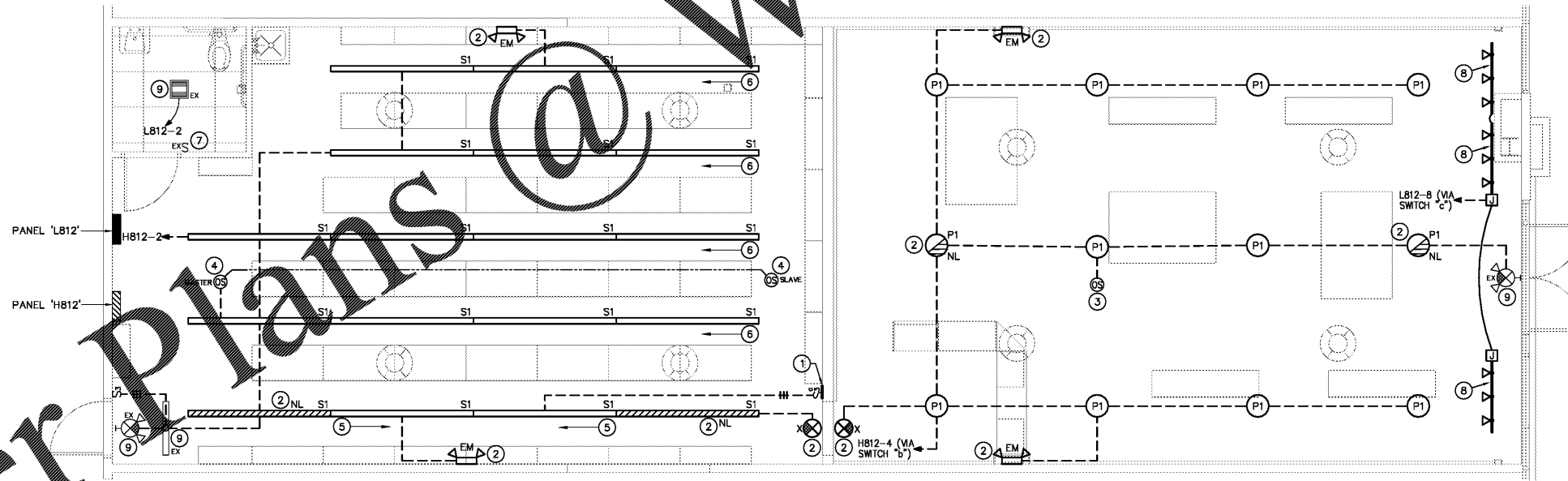
ALTERNATE LUMINAIRE SHALL BE BY "LITHONIA", "PHILIPS GROUP", "HUBBELL LIGHTING" AND "COOPER INDUSTRY" ONLY; ALL ALTERNATE LUMINAIRE SUBSTITUTIONS LISTED ABOVE MUST BE SUBMITTED FOR TEN DAY PRIOR APPROVAL (SEE ELECTRICAL SPECIFICATIONS)

**GENERAL NOTES:**

- ALL FLUORESCENT LUMINAIRE SHALL HAVE PROGRAMMED START, < 10% THD BALLASTS U.O.N.
- FLUORESCENT LUMINAIRE SHALL HAVE A MINIMUM BALLAST FACTOR (B.F.), AS FOLLOWING U.O.N.:
  - COMPACT FLUORESCENT: 0.95
  - T5 BASED: 1.0
  - T8 BASED: 0.88
- LAMPS SHALL BE BY SYLVANIA, GENERAL ELECTRIC OR PHILLIPS ONLY, NO SUBSTITUTIONS ALLOWED.
- PROVIDE NECESSARY MOUNTING HARDWARE AND ACCESSORIES FOR ALL LUMINAIRE
- PROVIDE .125 MIN. THICK LENSES FOR FLUORESCENT LUMINAIRE.
- ALL EMERGENCY, EXIT AND NIGHT LIGHT LUMINAIRE SHALL BE CONNECTED AHEAD OF LOCAL SWITCHES, UNLESS OTHERWISE NOTED.



- LIGHTING PLAN KEYED NOTES**
- SEE SWITCHBANK DETAIL.
  - CONNECT EMERGENCY, EXIT AND/OR NIGHT LIGHT FIXTURES SHALL BE CONNECTED AHEAD OF LOCAL SWITCHES, UNLESS OTHERWISE NOTED.
  - PENDANT MOUNT LOW VOLTAGE OCCUPANCY SENSOR AT SAME HEIGHT AS LIGHT FIXTURES. CONNECT TO LOAD SIDE OF SWITCHES "B" & "C". OCCUPANCY SENSOR EQUAL TO WATT-STOPPER #DT-355. SET TIME-OFF TO 30 MINUTES OR AS DIRECTED OWNER'S FIELD REPRESENTATIVE.
  - PENDANT MOUNT LOW VOLTAGE OCCUPANCY SENSOR AT SAME HEIGHT AS LIGHT FIXTURES. CONNECT TO LOAD SIDE OF SWITCH "A". OCCUPANCY SENSOR EQUAL TO WATT-STOPPER #DT-300. PROVIDE MASTER OCCUPANCY SENSOR WITH POWER PACK #BZ-150 AND INTERCONNECT WITH SLAVE OCCUPANCY SENSOR SO THAT ANY SENSOR WILL TRIGGER LIGHTS ON IN STOCK ROOM EXCEPT CORRIDOR. SET TIME-OFF TO 30 MINUTES OR AS DIRECTED OWNER'S FIELD REPRESENTATIVE.
  - THIS ROW SHALL BE CONTROLLED BY SWITCH "A" ONLY.
  - THIS ROW SHALL BE CONTROLLED BY SWITCH "A" AND OCCUPANCY SENSOR.
  - EXISTING SWITCH IN RESTROOM SHALL REMAIN. FIELD VERIFY LOCATION.
  - MOUNT TRACK LIGHT TO BACKSIDE OF HEADER. COORDINATE MOUNTING HEIGHT IN FIELD WITH GENERAL CONTRACTOR PRIOR TO TROUGH-IN.



**FLOOR PLAN - LIGHTING**  
SCALE: 1/4"=1'-0"

Order Plans @

WWW.LDILINE.COM

**m**  
1231  
Cromwell Park Drive, Suite 113  
Well Business Park at BW1  
Annapolis, Maryland 21061  
L2  
Phone: 410.863.1302  
Fax: 410.863.1308  
© 2016 - All Rights Reserved

**ROBERTWAYNE**  
ROBERTWAYNE FOOTWEAR SERVICES  
DIVISION OF L & M FOOTWEAR, INC.  
500 EAST WASHINGTON BLVD.  
CONCORD, CA 94520

**ROBERTWAYNE**  
NORFOLK PREMIUM OUTLETS  
NORFOLK, VA

REV. #	ISSUE / DESCRIPTION	DATE
01	CLIENT REVIEW	01/31/17

**FLOOR PLAN - LIGHTING**

DATE: 01/31/17  
DRAWN BY: AM  
CHECKED BY: CK  
PROJECT NO: 16301  
SHEET NO: 2

**E-201**

16301 - E .dwg