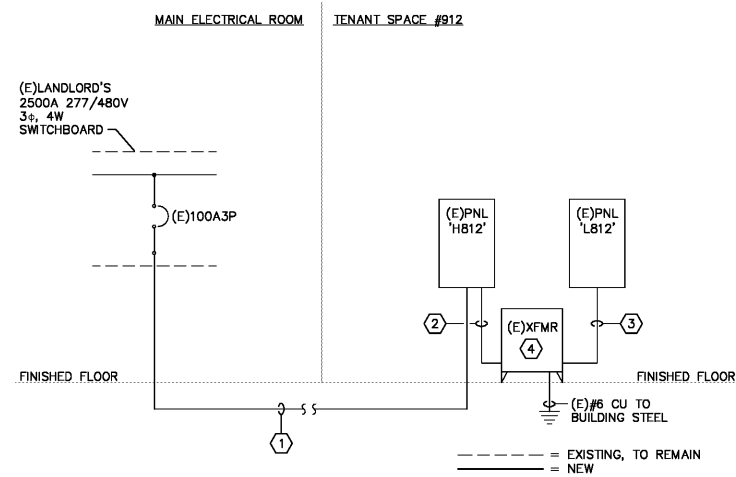


(E) PANEL 'H812'													
LOCATION: STOCK ROOM				MAIN: 100A MLO				CONN. LOAD: 28.3 KVA					
VOLTAGE: 480Y/277V				SYSTEM: 3Ø, 4W				FEED: BOTTOM					
TRIM:				BUS RATING: 100A				GROUND BUS: YES					
CKT	LOAD SERVED	COND	PHASE	NEUT	W	DMD	BKR	COND	PHASE	NEUT	W	LOAD SERVED	CKT
1	EXISTING WATER HEATER	EX	EX	EX	EX	20/1	L	20/1	1/2"	#12	#12	LIT: STOCKROOM	2
3	LIT. SALES	1/2"	#12	#12	20/1	L	20/1	1/2"	#12	#12			4
5	SPARE					20/1		20/1				SPARE	6
7	SPARE					20/1		20/1				SPARE	8
9	SPARE					20/1		20/1				SPARE	10
11	SPARE					20/1		20/1				SPARE	12
13	SPARE					20/1		20/1				SPARE	14
15	SPARE					20/1		20/1				SPARE	16
17	SPARE					20/1		20/1				SPARE	18
19	SPARE					20/1		20/1				SPARE	20
21	SPARE					20/1		20/1				SPARE	22
23	SPARE					20/1		20/1				SPARE	24
25	SPARE					20/1		20/1				SPARE	26
27	SPARE					20/1		20/1				SPARE	28
29	SPARE					20/1		20/1				SPARE	30
31	SPARE					20/1		20/1				SPARE	32
33	SPARE					20/1		20/1				SPARE	34
35	SPARE					20/1		20/1				SPARE	36
37	EXISTING ROOFTOP UNIT					25/3	A	50/3	SF	60/3		3Ø KVA XFMR (PANEL 'L812')	38
39													40
41													42

(E) PANEL 'L812'													
LOCATION: STOCKROOM				MAIN: 100A MCB				CONN. LOAD: 5.9 KVA					
VOLTAGE: 208Y/120V				SYSTEM: 3Ø, 4W				FEED: TOP					
TRIM:				BUS RATING: 100A				GROUND BUS: YES					
CKT	LOAD SERVED	COND	PHASE	NEUT	W	DMD	BKR	COND	PHASE	NEUT	W	LOAD SERVED	CKT
1	REC-RESTROOM RTU	1/2"	#12	#12	#12	20/1	R	20/1	1/2"	#12	#12	LIT-RESTROOM	2
3	REC-MUSIC SYSTEM	1/2"	#12	#12	#12	20/1	R	20/1	1/2"	#12	#12	REC-SHOW WINDOW	4
5	REC-CASHWRAP	1/2"	#12	#12	#12	20/1	R	20/1	1/2"	#12	#12	REC-SALES	6
7	REC-STOCKROOM	1/2"	#12	#12	#12	20/1	R	20/1	1/2"	#12	#12	TRUCK LGTS	8
9	REC-SALES	1/2"	#12	#12	#12	20/1	R	20/1	1/2"	#12	#12	SPARE	10
11	SPARE					20/1		20/1				AIR CURTAIN	12
13	REC-TELEPHONE BOARD	1/2"	#12	#12	#12	20/1	R	20/1	1/2"	#12	#12	REC-CASHWRAP	14
15	SPARE					20/1		20/1				SPARE	16
17	SPARE					20/1		20/1				SPARE	18
19	SPARE					20/1		20/1				SPARE	20
21	SPARE					20/1		20/1				SPARE	22
23	SPARE					20/1		20/1				SPARE	24
25	SPARE					20/1		20/1				SPARE	26
27	SPARE					20/1		20/1				SPARE	28
29	SPARE					20/1		20/1				SPARE	30
31	SPARE					20/1		20/1				SPARE	32
33	SPARE					20/1		20/1				SPARE	34
35	SPARE					20/1		20/1				SPARE	36
37	SPARE					20/1		20/1				SPARE	38
39	SPARE					20/1		20/1				SPARE	40
41	SPARE					20/1		20/1				SPARE	42



POWER RISER DIAGRAM

N.T.S.
POWER RISER DIAGRAM IS INTENDED FOR REFERENCE ONLY.

FIELD INVESTIGATE AND IDENTIFY FEEDER SIZE, PANEL SIZE AND UPSTREAM OVERCURRENT SIZE. RECORD AND SUBMIT TO ENGINEER IF FOUND DIFFERENT FROM SIZES SHOWN.

RISER DIAGRAM NOTES

- (E)2" C WITH 4 #1/0, 1 #6 GND. CONDUCTORS ARE TERMINATED IN LANDLORD'S 2,500 AMP, 277/480 VOLT, 4-WIRE MAIN SWITCHBOARD AND PROTECTED BY A 3-POLE, 100 AMP RATED CIRCUIT BREAKER.
- SEE PANEL 'H812' SCHEDULE THIS SHEET.
- (E)CONDUIT AND CONDUCTORS SHALL REMAIN. INSTALL (N)1 #6 ISOLATED GROUND. CONNECT TO TRANSFORMER XO TERMINAL.
- (E)3Ø KVA, 3-PHASE, 480V DELTA, 208/208 WYE DR. TYPE TRANSFORMER.

POWER RISER GENERAL NOTES

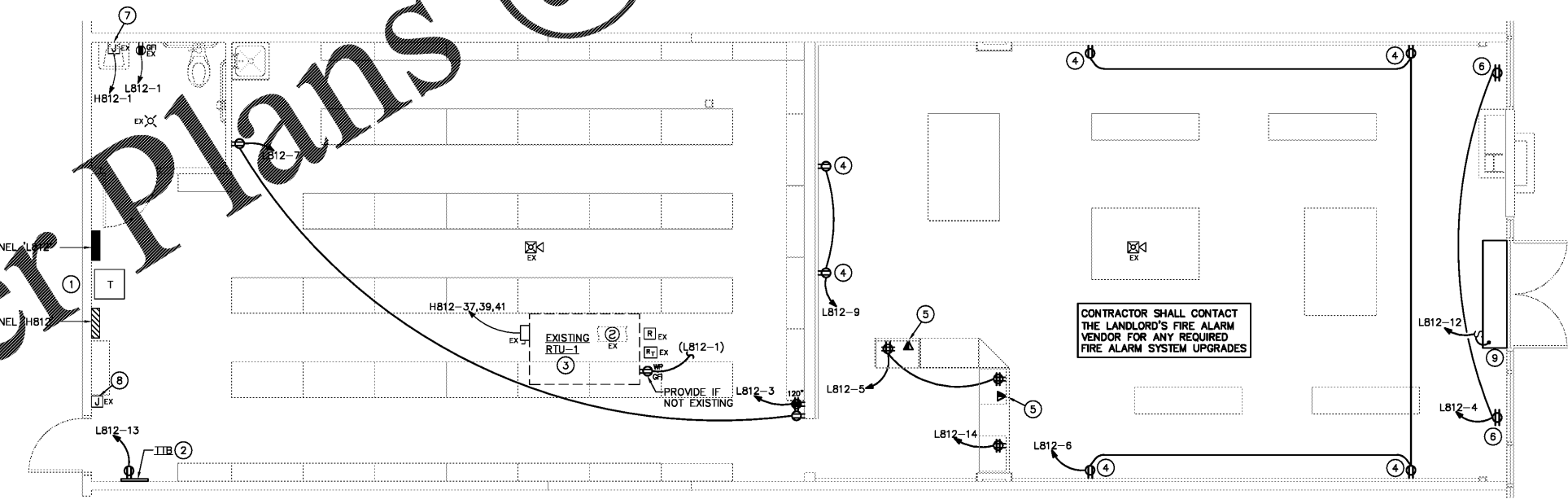
- TENANT GENERAL CONTRACTOR TO UPDATE BILLING INFORMATION ON THE ELECTRICAL FEEDER TO NEW TENANT'S INFO UPON COMMENCEMENT OF CONSTRUCTION.
- COORDINATE WITH M.E. ENGINEER ON ANY UPGRADES THAT MAY BE REQUIRED TO BRING TENANT'S SYSTEM UP TO CURRENT STANDARDS.
- 45 KVA AND SMALL TRANSFORMERS CAN BE SUPPORTED FROM STRUCTURE ABOVE. LARGER TRANSFORMERS MUST BE FLOOR MOUNTED ON CONCRETE CURB WITH CLEARANCES PER LOCAL CODE.
- ALL SUPPORTS TO BE FROM STRUCTURAL BOTTOM AND JOISTS AND NOT DECK ABOVE.
- ELECTRICAL PANEL(S) MUST HAVE TYPE WRITTEN DIRECTORIES INDICATING ALL CIRCUITS SERVED.
- BALANCE PANELS PHASE LOADS WITHIN +/- 10%.

PROJECT COORDINATION NOTES

- BIDDERS ARE TO VISIT THE SITE AND FAMILIARIZE THEMSELVES WITH EXISTING CONDITIONS AND SATISFY THEMSELVES AS TO THE NATURE AND SCOPE OF WORK. THE SUBMISSION OF A BID WILL BE EVIDENCE THAT SUCH AN EXAMINATION HAS BEEN MADE. LATER CLAIMS FOR LABOR, EQUIPMENT OR MATERIALS REQUIRED, OR FOR DIFFICULTIES ENCOUNTERED WHICH COULD HAVE BEEN FORESEEN HAD AN EXAMINATION BEEN MADE, WILL NOT BE ALLOWED.
- ALL EXISTING CIRCUITS TO REMAIN CONNECTED WHETHER INDICATED OR NOT ON PROJECT DOCUMENTS.
- NEW AND EXISTING CIRCUIT DESIGNATIONS MAY NOT REPRESENT ACTUAL FIELD CONDITIONS. THEY ARE INTENDED FOR REFERENCE ONLY.
- COORDINATE WITH OTHER TRADES FOR ITEMS IN THEIR SCOPE OF WORK WHICH WOULD REQUIRE ELECTRICAL WORK (DISCONNECTION/RECONNECTION, ETC.) AND ARE NOT INDICATED ON THE ELECTRICAL PLANS.
- ELECTRICAL CONTRACTOR SHALL PROVIDE EXTENSION RINGS FOR ALL NEW AND EXISTING DUPLEX RECEPTACLES AND OTHER DEVICES IN WALLS AREAS WHERE NEW WALLS AND OR DRYWALL IS INSTALLED.

POWER PLAN KEYED NOTES

- LOCATION OF EXISTING ELECTRICAL SERVICE EQUIPMENT. SEE PANEL SCHEDULES AND PARTIAL POWER RISER DIAGRAM THIS SHEET.
- PROVIDE 2" WIDE 4" X 3" PAINED PLYWOOD TELEPHONE TERMINAL BOARD AT 6" AFF TO TOP EXTENDING 1" TELEPHONE TO NEW TELEPHONE BOARD LOCATION.
- EXISTING ROOFTOP UNIT SHALL REMAIN. FIELD VERIFY LOCATION.
- ELECTRICAL CONTRACTOR SHALL PROVIDE EXTENSION RINGS AS REQUIRED TO RECEPTACLE FOR WALL BEING FURRED OUT.
- ELECTRICAL CONTRACTOR SHALL PROVIDE FOUR (4) TELEPHONE LINES AND ONE (1) CAT5E DATA CABLE IN 1" CONDUIT FROM CASH WRAP BACK TO TELEPHONE BOARD. LEAVE 6" SLACK CABLE AT EACH END FOR FUTURE CONNECTION BY OTHERS.
- CEILING MOUNTED RECEPTACLE FOR SHOW WINDOW SIGNAGE.
- EXISTING WATER HEATER SHALL REMAIN. FIELD VERIFY LOCATION.
- EXISTING TENANT FIRE ALARM JUNCTION BOX.
- AIR CURTAIN. SEE MECHANICAL DRAWINGS FOR ADDITIONAL INFORMATION.



FLOOR PLAN - POWER
SCALE: 1/4"=1'-0"

Order Plans @



1231
Creswell Park Drive, Suite 113
Small Business Park at BWI
Annapolis, Maryland 21041
Phone: 410.863.1302
410.863.1308
Fax: 410.863.1302
E-mail: rwayne@robertwayne.com
Robert Wayne, P.E.
CONSULTING ENGINEER
6 W. LINEBAUGH AVE. STE. 101
TAMPA, FLORIDA 336
T : 13 611 - 1
F : 13 611 - 1
© 2016 - All Rights Reserved

ROBERTWAYNE

ROBERT WAYNE FOOTWEAR BUSINESS
DIVISIONS OF L & M FOOTWEAR, INC.
500 EAST WASHINGTON BLVD.
COLUMBIA, CA 900

ROBERTWAYNE
NORFOLK PREMIUM OUTLETS
NORFOLK, VA

REV. #	ISSUE / DESCRIPTION	DATE
	CLIENT REVIEW	01/31/17

9407 9905
FLOOR PLAN - POWER & SCHEDULES

DATE PLOTTED	DATE PLOTTED BY
AM	CK
16301	
16301	

E-101