

GENERAL NOTES

- COORDINATE ALL LIGHT FIXTURES, EMERGENCY & NIGHT LIGHT LOCATIONS & SPECIFICATIONS WITH THE ELECTRICAL DRAWINGS.
- SEE MECHANICAL & ELECTRICAL DRAWINGS FOR SYMBOL LEGEND.
- ALL EXITS SHALL BE PROVIDED WITH SELF ILLUMINATED EXIT SIGNS HAVING 6" LETTERS WITH 3/4" STROKES IN CONTRASTING LETTERS. EXIT SIGNS TO BE GREEN IN COLOR, PER CITY ORDINANCE.
- SEE ELECTRICAL DRAWINGS FOR SEISMIC BRACING DETAILS FOR LIGHTING FIXTURES.
- ALL FLUORESCENT FIXTURES WITH DOUBLE-ENDED LAMPS SHALL BE EQUIPPED WITH EJECT MEANS PER 410.73(G) [CEC 2013]



Jeffrey D Mahler
architect
940 Barrett Ave.
Annapolis, MD 21402
410-863-1302
410-863-1308
Practicing as an Individual

ROBERTWAYNE

ROBERT WAYNE FOOTWEAR SUBSIDIARY
DIVISION OF L & M FOOTWEAR, INC.
505 EAST WASHINGTON BLVD.
COLUMBIA, CA 9066

ROBERTWAYNE
NORFOLK PREMIUM OUTLETS
NORFOLK, VA

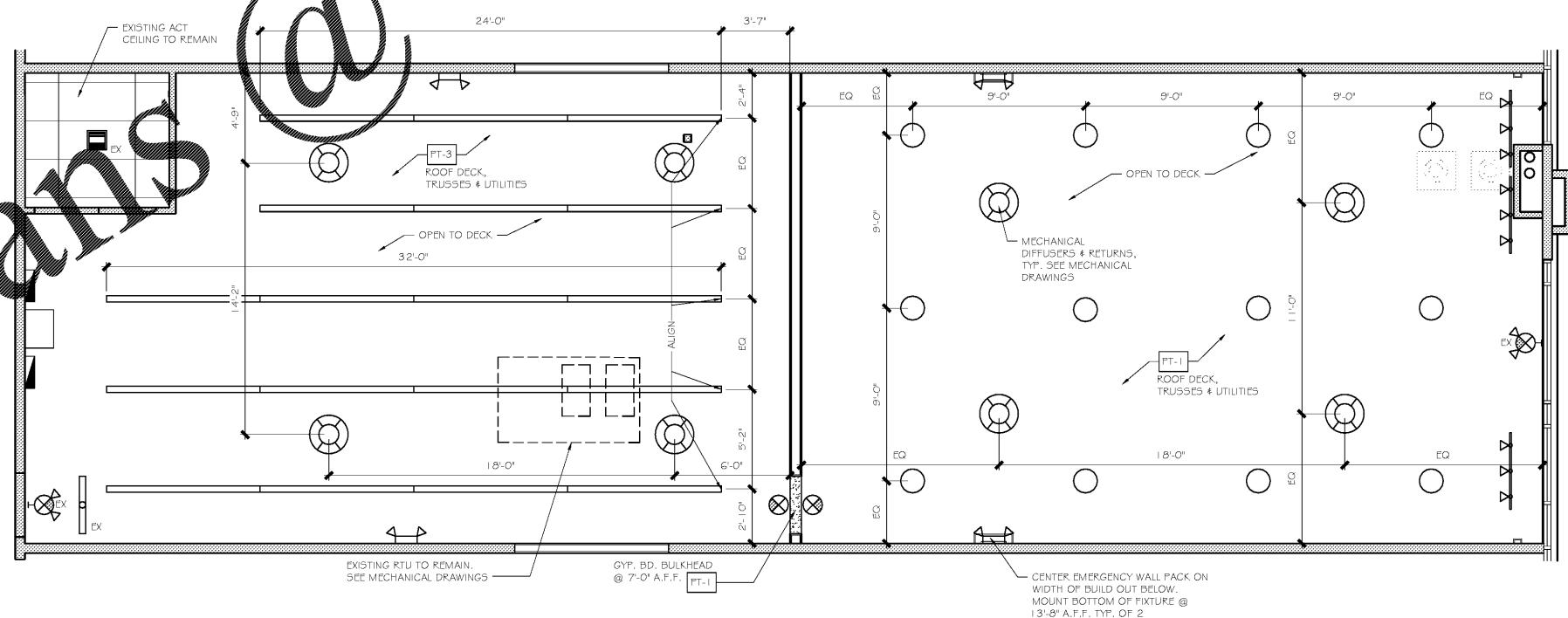
REV #	ISSUE / DESCRIPTION	DATE
	CLIENT REVIEW	01/13/17
	CLIENT / LL REVIEW	01/18/17

SHEET TITLE:
REFLECTED CEILING PLAN

DRAWING DATE:
DRAWN BY: ARS
REVIEWED BY: JDM
PROJECT # 16.316
SHEET #

A-102

FILE NAME:
16.316 A-102 .dwg



D1 REFLECTED CEILING PLAN
SCALE: 1/4" = 1'-0"

Order Plans @ www.LDILine.com